



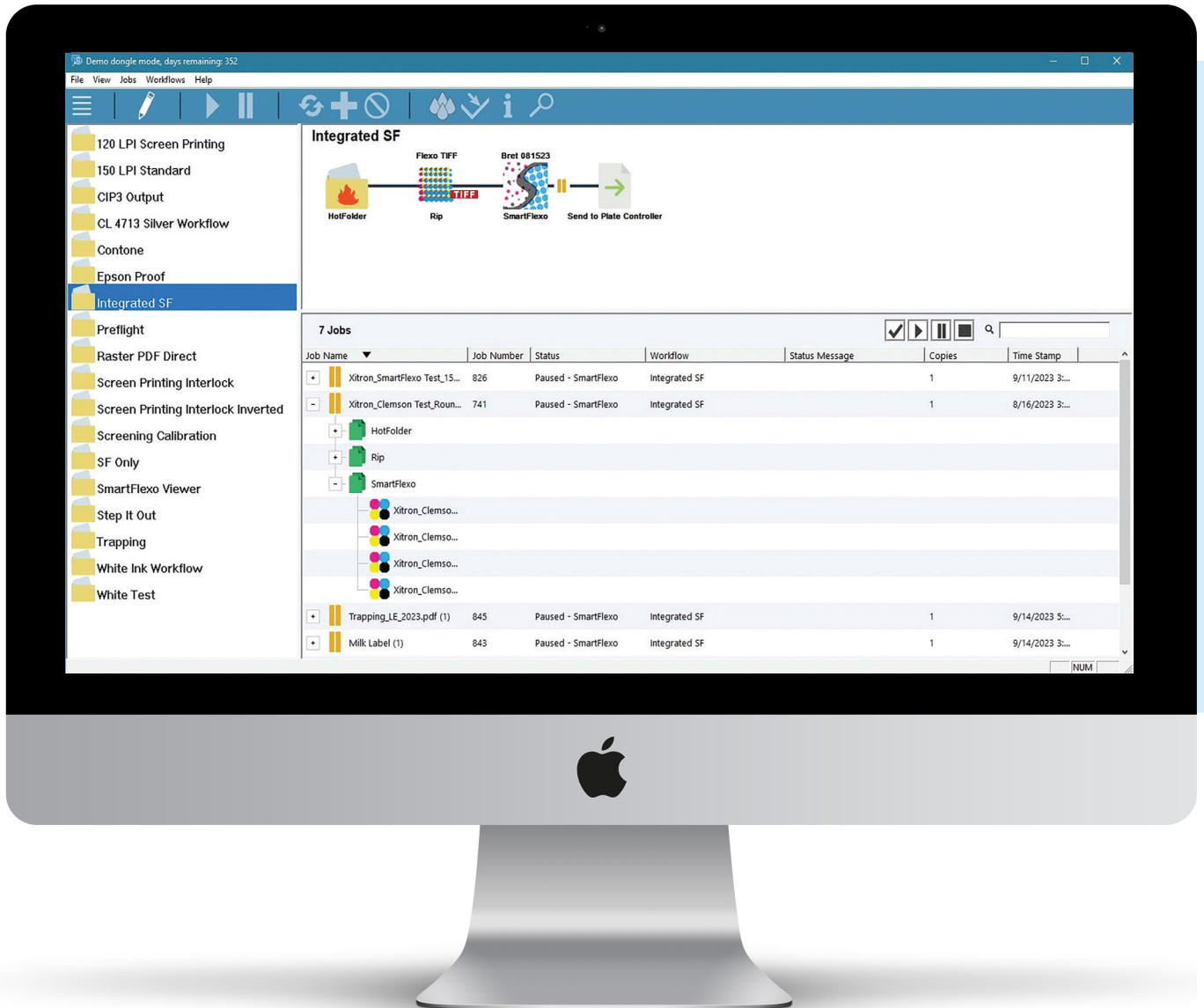
Navigator Flexo Suite



A bold new direction
for Flexo Prepress

Take your efficiency and quality
to the highest level with...

Navigator Flexo Suite.



Xitron's **Navigator Flexo Suite** is a tightly integrated collection of workflow tools designed specifically for use with today's Flexographic Computer-to-Plate systems. It's a modular concept that allows the user to create precisely the functionality they require, based on the type of printing they do.

Navigator Harlequin-based RIP

- Process PostScript, PDF and EPS files
- PDF 2.0 compliant
- Fast, consistent, and accurate rendering
- User-defined resolutions up to 9,600 dpi
- Precision flexo screening
- Selectable dot shapes
- ColorPro Color Management Module



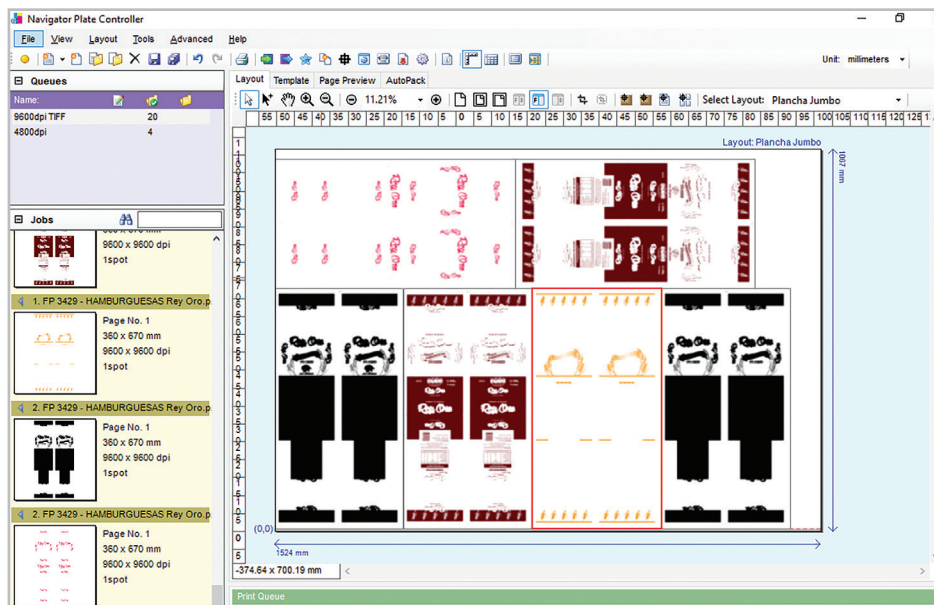
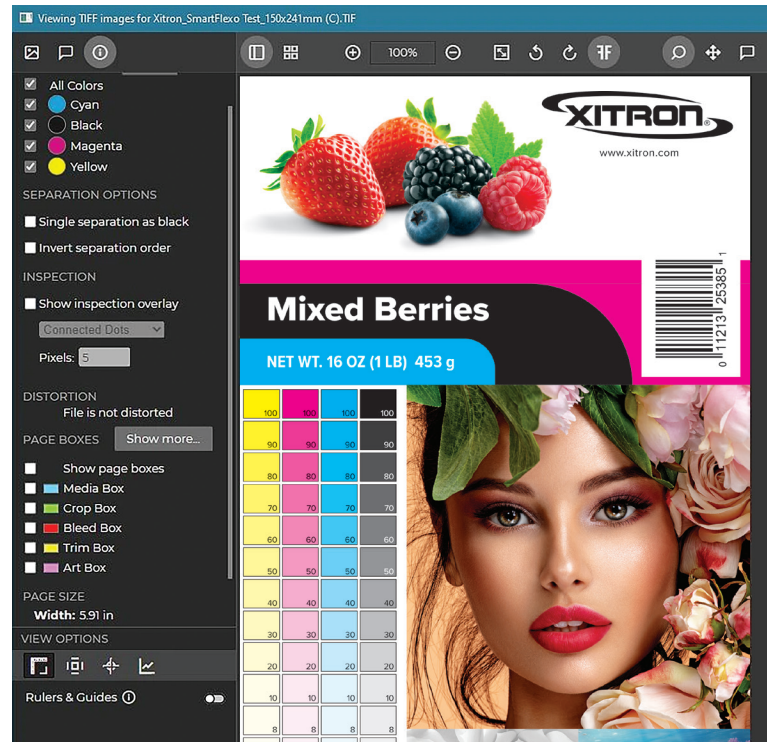
More than 45,000 Navigator installations worldwide.

Navigator Workflow

- Client/Server system with Mac/Win clients installed on workstations throughout the shop
- Add jobs through drag and drop, hot folders, or direct print
- Complete job control from start to finish
- Real time progress display
- Accurate pixel level preview
- Archive jobs for reprinting

Optional Features:

- Raster PDF soft-proofing
- Job pre-flighting and ink remapping
- Add more user clients
- Color-managed output to Epson SureColor



Navigator Plate Controller

- Drag and drop to assemble jobs and plates
- Move, rotate, and add jobs by clicking and dragging them into position
- Auto Crop generates an output image that prevents wasting unused plate areas

Screening Template Editor

Screening Templates Curves

Screening Template Name: 2400

Resolution: 2400 Screen Level: 1048 (256-65536) Screen Angle Set: Flexo Curve: Trial 1 081... Defined Spot Colors: +

Dot Shape: Cyan SmartFlexo Magenta SmartFlexo Yellow SmartFlexo Black SmartFlexo Default Spot SmartFlexo

Screen Frequency: 150 150 150 150 150

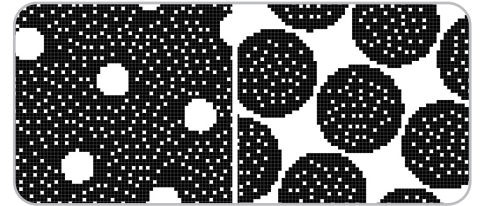
Screen Angle: 7.5 67.5 82.5 37.5 37.5

Highlight Area: SmartDot Zone (max dot size): 0% - 7.0 Minimum SmartDot Size: 0% - 0.5 Level of SmartDot: (1-9) 2

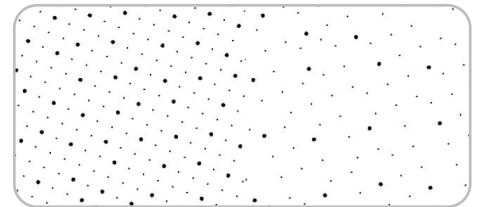
Shadow Area: SmartDot Zone: 100 50% - 100% Rotate 90 SmartCell Zone: 90 50% - 100% SmartCell Alignment: AM Align... SmartCell Size: 3x3 pix SmartCell Density: 3 Level SmartCell Premium SmartCell Boundary Width: 2 Pixels

SmartFlexo Screening

- Intelligent screening module is completely configurable to your printing conditions
- Specify minimum dot, supporting dots, and alignments
- Automated templates



- Remove pixels for better coverage in solid areas

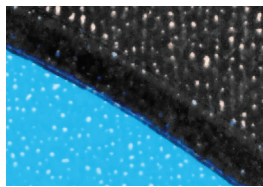


- Specify transition from AM to FM for superior highlight and shadow control

SmartFlexo



Standard



Navigator Flexo Suite Version Comparison

	Navigator Workflow	Harlequin RIP	Plate Controller	Screening Technology	Vector Trapping	Tabular Step & Repeat	PACKZ®
Flexo Suite : Lite	✓	✓	✓	Harlequin	Optional	Optional	Optional
Flexo Suite	✓	✓	✓	SmartFlexo	Optional	Optional	Optional
Flexo Suite : Label	✓	✓	✓	Harlequin	✓	✓	Optional

Tabular Step & Repeat – For rectangular and irregular-shaped labels and flexible packaging

PACKZ® – Advanced PDF editor

© 2023 Xitron is a subsidiary of Hybrid Software Group PLC. All Rights Reserved.