

# Configuring Queues

## Xitron Raster Blaster Technical Note

November 18, 1999

This Tech. Note is for use with Raster Blaster version 2.0. Although the same theories apply, users of other versions of Raster Blaster should review the queue setup procedures in their Raster Blaster Users Manual.

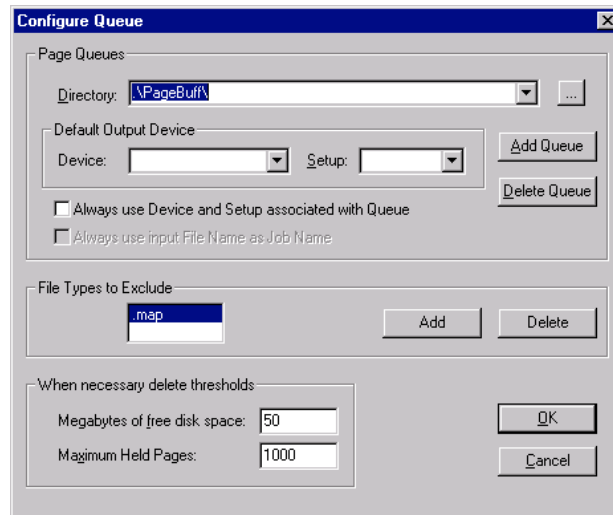
Creating and deleting queues in Raster Blaster can be confusing. By following the procedures below, queues can be created and changed successfully every time.

The procedures used for creating and changing queues in Raster Blaster version 1.X and 2.X are very similar. This can result in some confusion and difficulty creating successful queues. This tech note will discuss only version 2.X. Basic techniques will apply to lesser versions.

### Creating/Adding New Queues

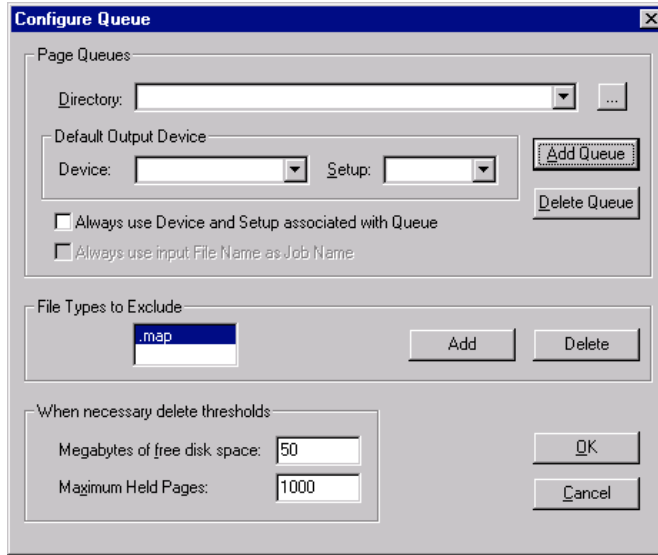
When creating new queues, follow these steps:

1. Enter the configure queues window by selecting "configure queue" from the File menu (see figure 1 below).



NOTE: when the configure queues window is opened, a queue directory will appear in the directory dialogue. The first time the window is opened the directory "\\PAGEBUFF\" will appear in the directory. It is not necessary to delete this directory, and may be helpful to leave it.

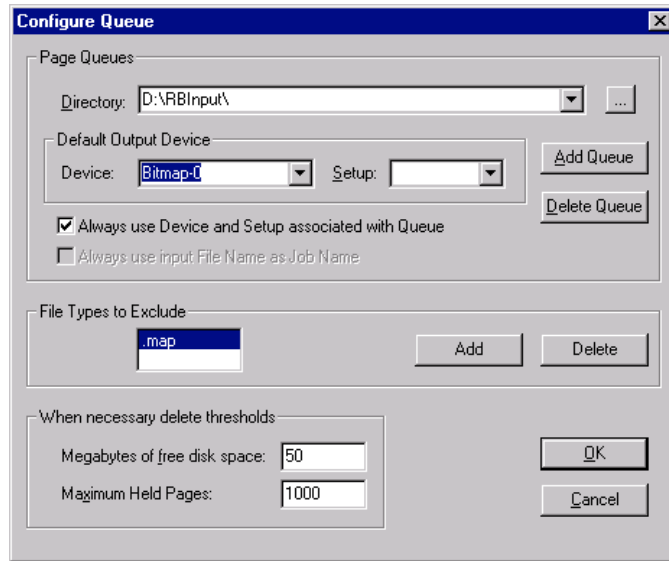
2. Before creating a new queue, you must always begin by pressing the Add Queue button. When the Add Queue button is pressed, items listed in the directory dialog will disappear, and the directory dialog will be blank (see figure 2 below). Raster Blaster is now ready to create a new queue.



3. Press the "... " button. The directory browser will appear (see figure 3 below).



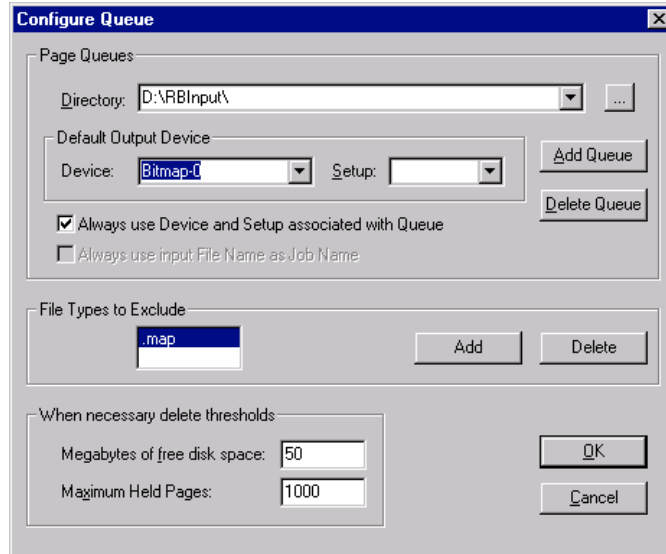
4. Locate and select the input directory for the new queue. The directory path will appear in the directory dialog (see figure 4 below).



5. Turn on the “Always use Device and Setup associated with Queue” option and select the Device and Setup to be associated with this queue.
6. Click the “Add” button again so that the “Directory” field appears blank. Click “OK” to save your changes.

NOTE: These steps are essential to proper queue function. If a job is not associated with a device, it will appear in the active window, but it will not image.

7. In version 2.0 there is an option to skip queued files with names that contain designated extensions. It is called “File Types to Exclude” (see figure 5 below). If the extensions ".tmp" and ".TMP" are not listed, add them to the list. This procedure should only be required once, unless these entries are manually removed.

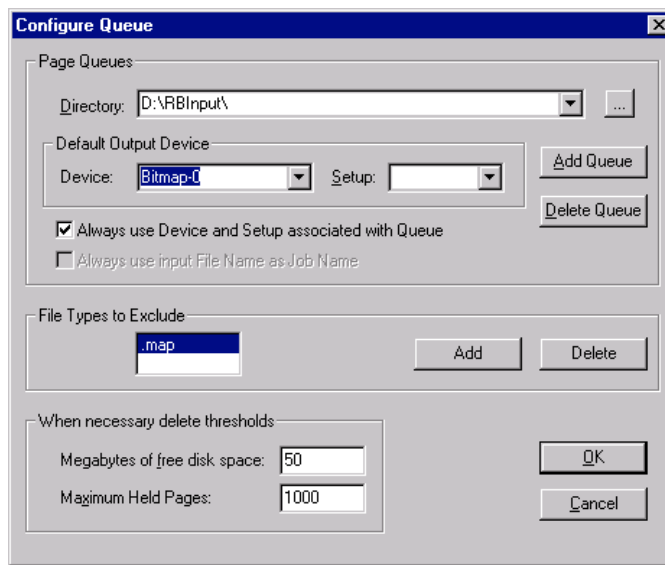


## Editing/Changing Existing Queues

The following changes can be made to an existing queue:

- Change the Device associated with the queue.
- Change the Setup associated with the queue.
- Change the queue directory.
- Delete the queue.

Begin any queue changes by selecting "configure queues" from the Edit menu and entering the configure queues window (see figure 7 below).



NOTE: Queues are remembered by their directory. Any changes that are made will effect the queue/directory listed at the top of the Configure Queue window.

To change the device associated with a queue:

1. From the Directory pull down list, choose the Queue (the directory path) that is to be changed.
2. Choose the appropriate Device from the Device pull down menu.
3. Press the "Add Queue" button.
4. Press the "OK" button to close the configure queues window.

To change the Setup associated with a queue:

1. From the directory pull down list, choose the queue (the directory path) that is to be changed.
2. Choose the appropriate Setup from the Setup pull down menu.
3. Press the "Add Queue" button.
4. Press the "OK" button to close the Configure Queue window.

To change the Queue's input directory

1. From the directory pull down list, choose the Queue (the directory path) that is to be changed.
2. Press the " . . . " button. The directory browser will appear.
3. Locate and select the new input directory for the Queue. The directory path will appear in the directory dialogue.
4. Press the "Add Queue" button.
5. Press the "OK" button to close the configure queues window.

To Delete a Queue

1. From the directory pull down list, choose the Queue (the directory path) that is to be deleted.
2. Press the "Delete Queue" button. The directory browser will appear.
5. Press the "OK" button to close the configure queues window