



X MARKS THE SPOT WHERE IT ALL COMES TOGETHER.

TB06-002:

UPGRADE PROCEDURE FOR NAVIGATOR 7.1 AND RIP MANAGER

The information and procedures in this bulletin should be used when upgrading Navigator RIP users from previous versions to Navigator 7.1r2 with Navigator RIP Manager 3.1. A similar procedure is applied when upgrading RIP Manager (only) from earlier versions of RIP Manager or XiFlow and will be discussed later in the bulletin.

When upgrading any Harlequin RIP, Xitron always advises installing the new RIP in a new folder, separate from any existing version. Occasionally the Installation Wizard will detect certain clues from the previous install and default to the current folder structure. That is, it will try to install the new software over the old software. Although the install wizard is designed to warn you should you attempt this, we recommend you double check your settings. If necessary, change the install directory by clicking on the Browse button during directory configuration and typing in the appropriate directory structure instead of using the default. Again, this is only necessary if the installer defaults to the directory structure of the existing RIP.

Also, it is very important not to skip **any** steps when following the procedures outlined in this document. Failure to complete each step in proper order may result in an incorrect or inoperable configuration. Once the upgrade procedure is complete, the old versions of RIP Manager or XiFlow will no longer function properly. If desired, and after the upgraded software has been successfully installed, configured and run, the previous programs can be removed by carefully deleting only their respective program folders. In this situation deleting the folders is sufficient, unless otherwise instructed, **DO NOT** run the uninstallers for previous versions of the RIP, RIP Manager, or XiFlow.

Different steps are required depending on the specific upgrade required and/or original configuration. Use the links below to access the step-by-step instructions for your specific situation:

[Upgrading to Xitron Navigator GPS \(Navigator 7.1r2 RIP and RIP Manager 3.1 bundled together\)](#)

[For systems where both the RIP Manager Server and the RIP reside on the same computer](#)

[Update a remote RIP being managed by RIP Manager Server on a different computer](#)

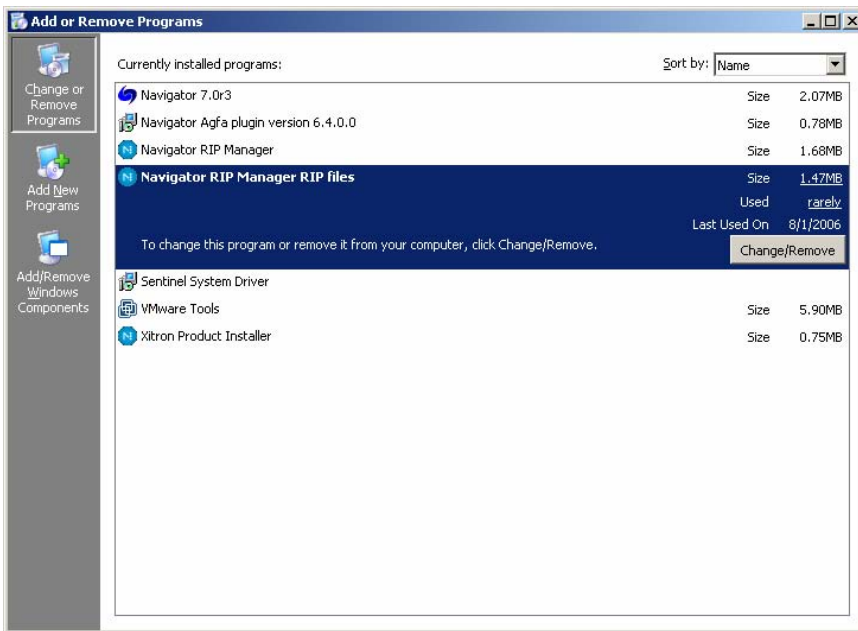
[Upgrading ONLY the RIP Manager Software \(all previous versions of RIP Manager and XiFlow to RIP Manager 3.1\)](#)

Upgrading to Xitron Navigator GPS (Navigator 7.1r2 RIP and RIP Manager 3.1 bundled together)

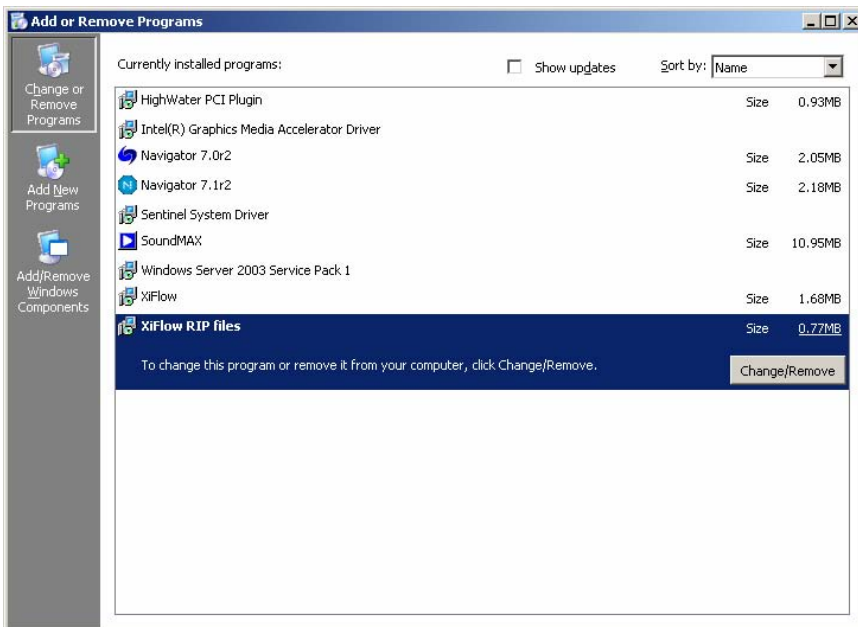
Complete the following steps in order:

1. Using the windows “Add or Remove Programs” utility (found in the Windows Control Panel), remove only the items entitled “Navigator RIP Manager RIP files” or “XiFlow RIP files.” If both exist in your list, remove both. Screen captures showing the items to be removed can be seen below.

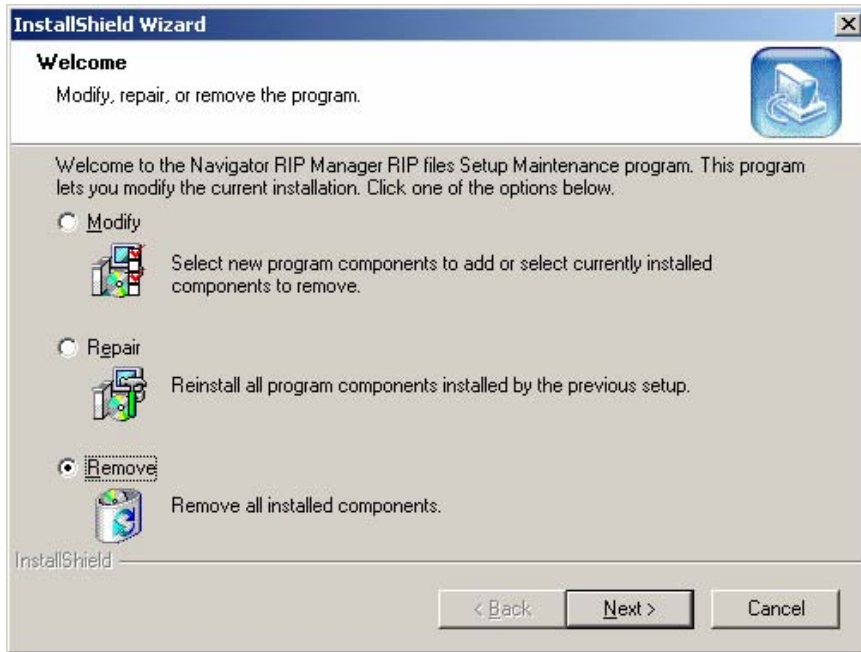
Note: Perform this removal function on local (installed on the same computer as RIP Manager server) and remote (installed on a different computer) RIPs managed by the server at this time ONLY if the RIPs are also being updated to 7.1r2.



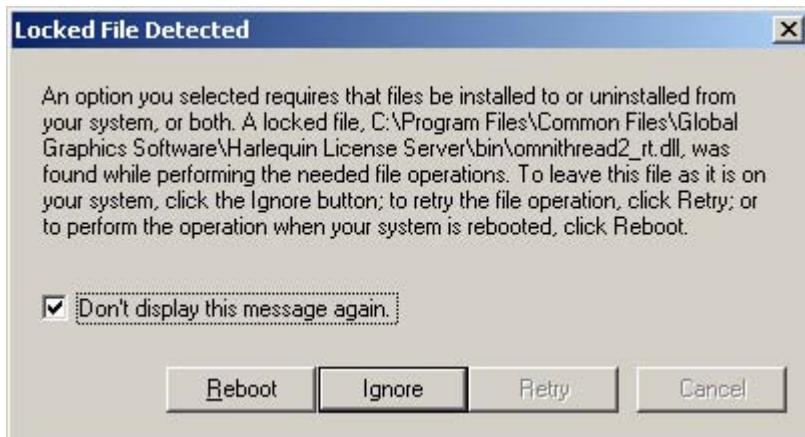
and/or



When the appropriate items are highlighted as shown in the previous screen captures, click the “Change/Remove” button. If the following window appears, choose “Remove” and then click “Next.”

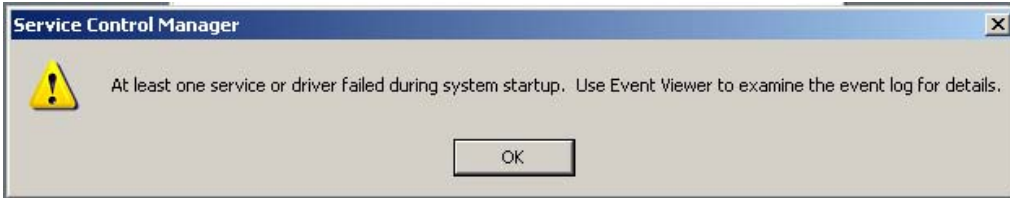


If the following warning window appears, check the box as shown and click the “Reboot” button to continue with proper removal.



2. After removing the programs, allow Windows to restart the computer or restart it manually. It is important to remember that, while the applications will be de-installed, the removal tool will not delete the root folders of the applications. DO NOT PLACE THESE FOLDERS IN THE RECYCLE BIN YET.

Note: When restarting the computer the following error may occur, this is normal and will be corrected when the upgrade software is loaded:



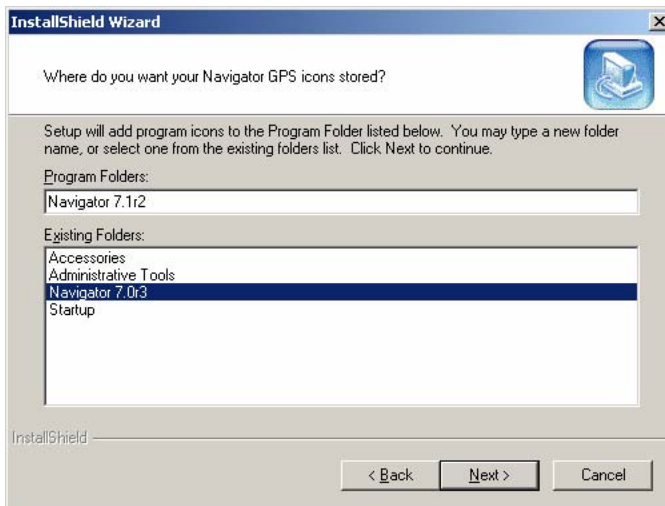
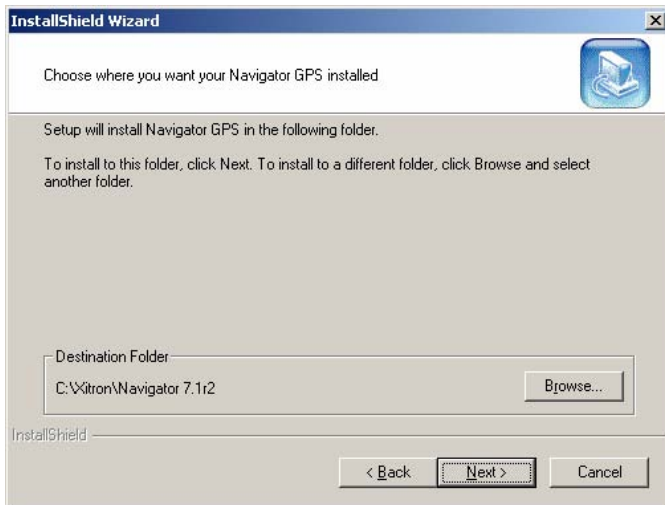
3. Load the new Navigator/RIP Manager Software.

For systems where both the RIP Manager Server and the RIP reside on the same computer:

a. With CD 1 of Navigator GPS in the drive, click "Navigator GPS" which will take you through the installation process for both the new RIP and RIP Manager.



b. Again, check both the Destination Folder name and the program files name (as shown below). It is important that these directories are different from any RIP already on the system.



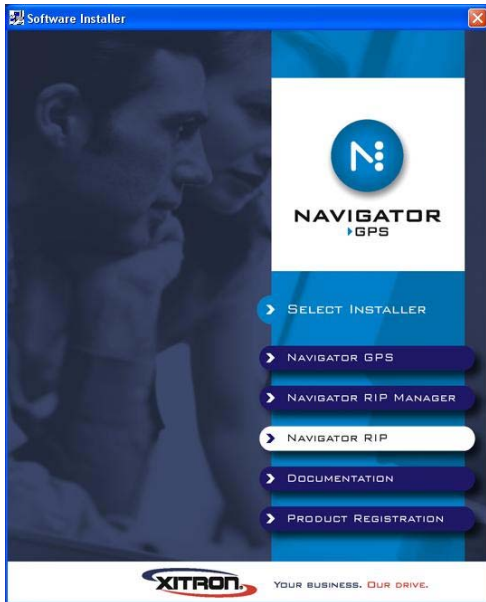
c. After the installation completes, restart the computer.

d. Load any appropriate drivers or plug-ins from CD 2 of the GPS set.

e. Restart the computer.

Update a remote RIP being managed by RIP Manager Server on a different computer

a. With CD 1 of Navigator GPS inserted in the drive, click “Navigator RIP.”



b. Follow the installation prompts and then restart the computer.

c. Insert CD 2 of the Navigator GPS set and load any appropriate plug-ins.

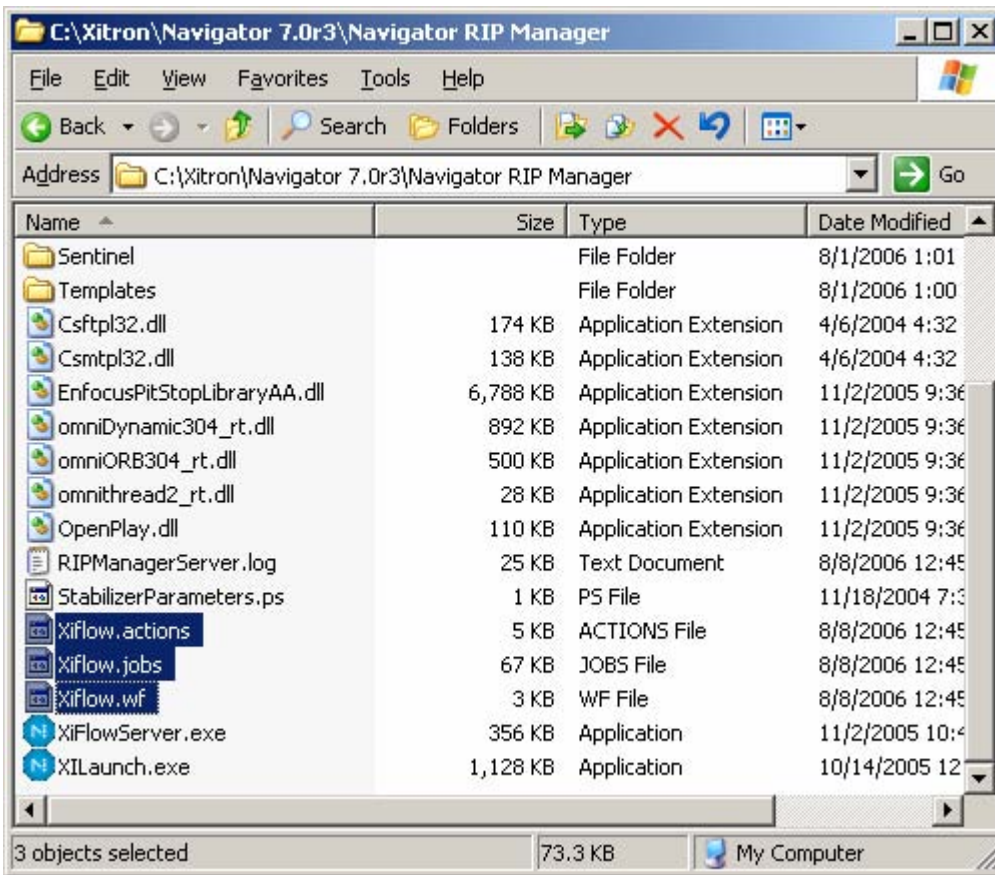
d. Restart the computer.

e. Re-insert CD 1 and load ONLY the “RIP Utilities,” which can be found by clicking the “Navigator RIP Manager” tab.



f. Restart the computer.

1. Launch the new RIP. After it has started up successfully, quit the application by selecting Navigator>Quit. This step is necessary for the Migrate utility to properly recognize the new RIP. If you don't complete this step, the Migrate utility will not offer you the option to migrate the old settings.
2. Launch the Migrate Utility, found in the Utilities folder of the RIP directory. Follow the migrate procedure to completion.
3. Restart the computer(s).
4. COPY the three database files from the old version of RIP Manager/Xiflow into the root directory of the new RIP Manager Program. This will transfer the previous RIP Manager settings to the New RIP Manager. IMPORTANT: do not "move" the files, copy them. You may want to make sure that you have a backup of these files saved somewhere safe. When the updated RIP Manager program is started it will change the files. Should an error occur, having a backup of the files will allow you to copy them over again. The files appear in the screen capture below:



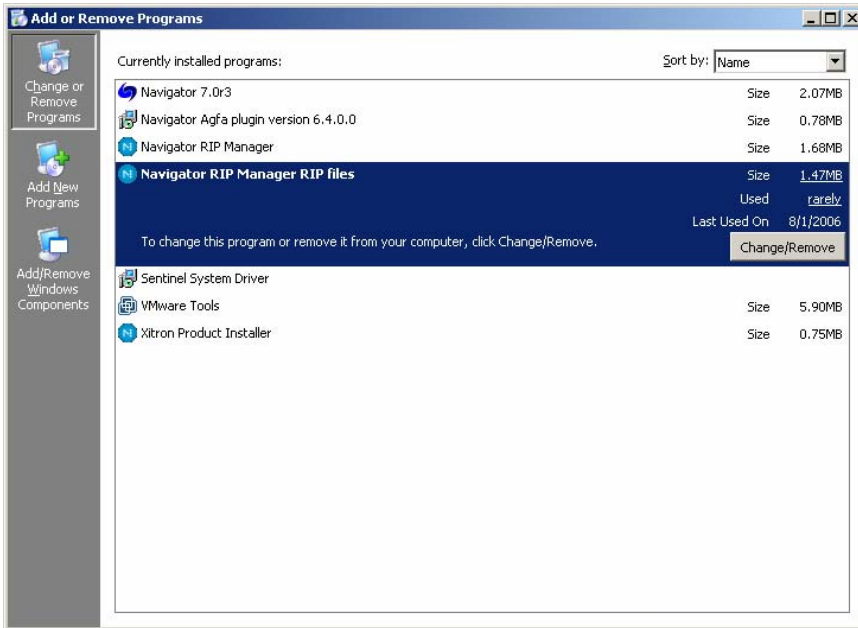
5. After the database files have been copied, start the system.
6. If you have upgraded to a 7.1 version of the Harlequin RIP you can now use the v7 RIP Action in RIP Manager. This will offer more control over Page Setup functions as well as smoother transfers of data between RIP Manager and the RIP. To convert to the v7 RIP action you must:
 - a. Create a v7 RIP Action as described in the RIP Manager manual.
 - b. Manually change all of the v6 RIP actions in each Workflow to the new v7 RIP action, making sure that the proper Page Setup is selected.

Upgrading ONLY the RIP Manager Software (all previous versions of RIP Manager and XiFlow to RIP Manager 3.1)

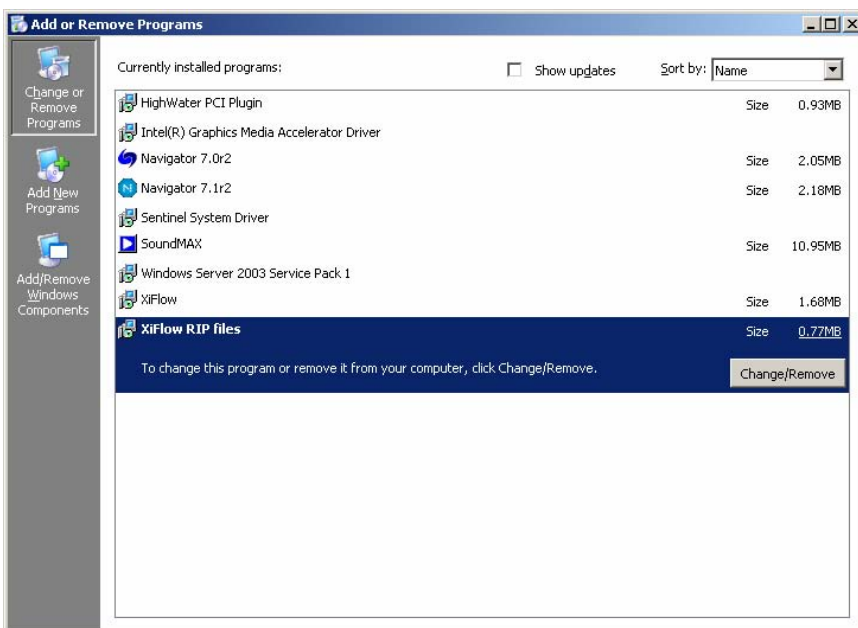
Complete the following steps in order:

1. Using the windows “Add or Remove Programs” utility (found in the Windows Control Panel), remove only the items entitled “Navigator RIP Manager RIP files” or “XiFlow RIP files.” If both exist in your list, remove both. Screen captures showing the items to be removed can be seen below.

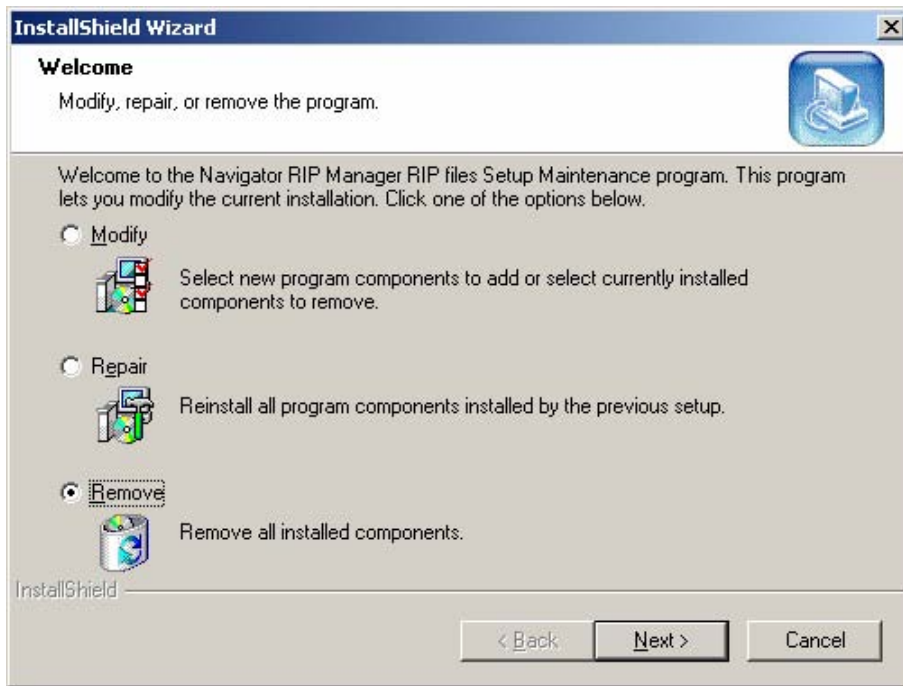
Note: Perform this removal function on local (installed on the same computer as RIP Manager server) and remote (installed on a different computer) RIPs managed by the server at this time ONLY if the RIPs are also being updated to 7.1r2.



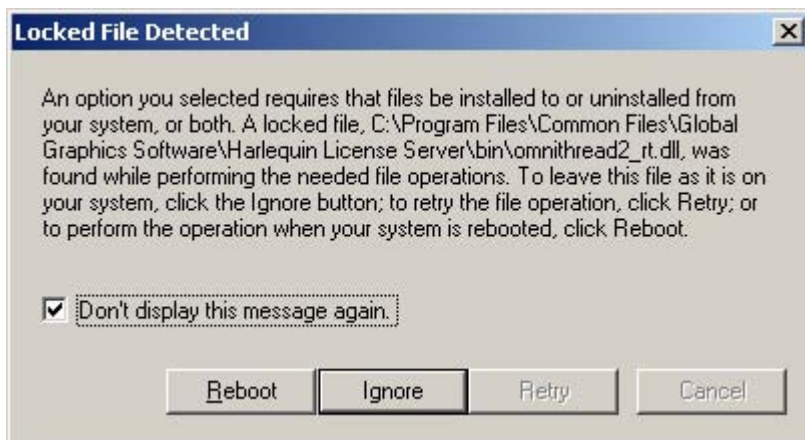
and/or



When the appropriate items are highlighted as shown in the previous screen captures, click the “Change/Remove” button. If the following window appears, choose “Remove” and then click “Next.”



If the following warning window appears, check the box as shown and click the “Reboot” button to continue with proper removal.

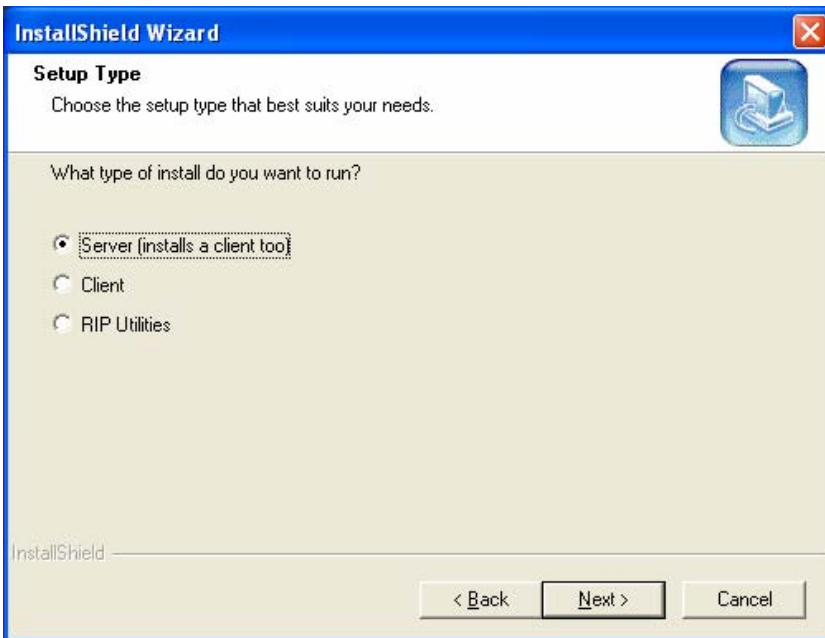


2. After removing the programs, allow Windows to restart the computer or restart it manually. It is important to remember that, while the applications will be de-installed, the removal tool will not delete the root folders of the applications. DO NOT PLACE THESE FOLDERS IN THE RECYCLE BIN YET.

Note: When restarting the computer the following error may occur, this is normal and will be corrected when the upgrade software is loaded:



3. Load the new RIP Manager Software (Server and Client) on the computer that will be the host for the RIP Manager Server. For more detailed installation instructions see the RIP Manager documentation. Allow the computer to be restarted by the installer.

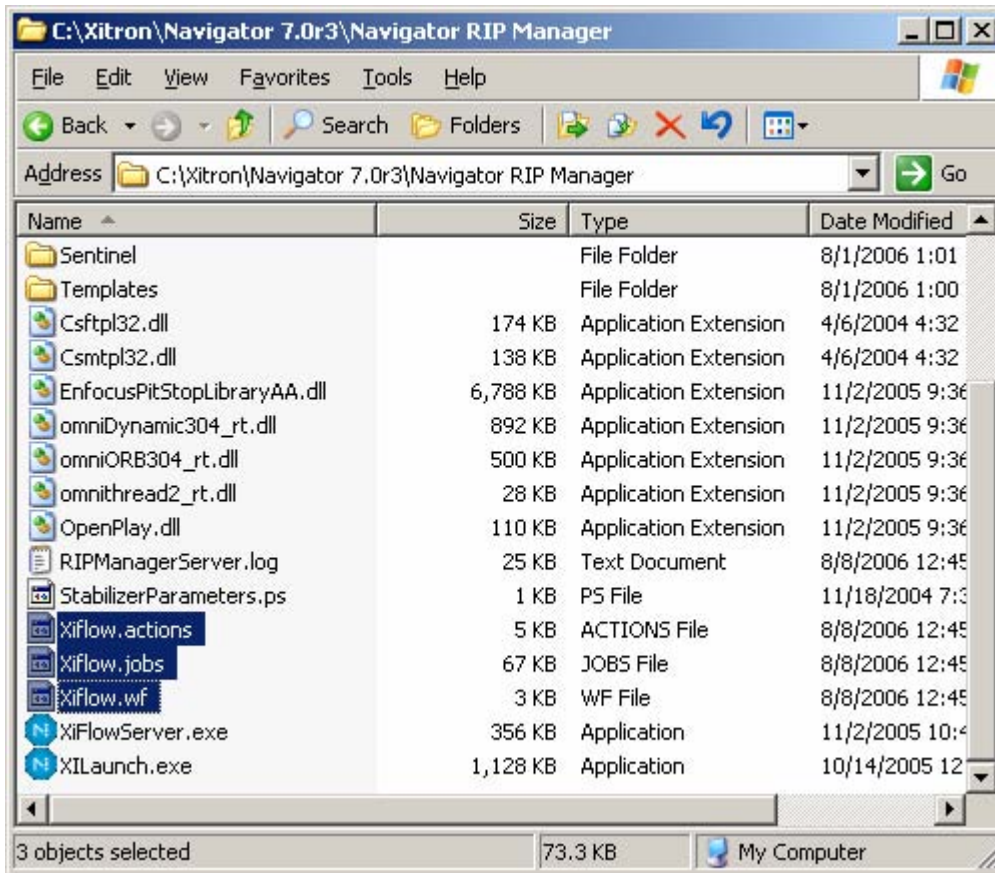


4. Load the RIP Utilities software on each of the RIPs to be controlled by the RIP Manager Server. For more detailed installation instructions see the RIP Manager documentation.



5. Restart the computer(s).

6. COPY the three database files from the old version of RIP Manager/Xiflow into the root directory of the new RIP Manager Program. This will transfer the previous RIP Manager settings to the New RIP Manager. IMPORTANT: do not “move” the files, copy them. You may want to make sure that you have a backup of these files saved somewhere safe. When the updated RIP Manager program is started it will change the files. Should an error occur, having a backup of the files will allow you to copy them over again. The files appear in the screen capture below:



7. After the database files have been copied, start the new RIP Manager system and RIPs being controlled by RIP Manager. NOTE: if you intend to use the v7 RIP Action you will have to use the special SOAR startup icon for the RIP – see the RIP Manager documentation for further instructions and RIP version limitations for use with the v7 RIP Action.