

# WriteFaultError When Imaging From Navigator Under Win2K

## Xitron Navigator Technical Note

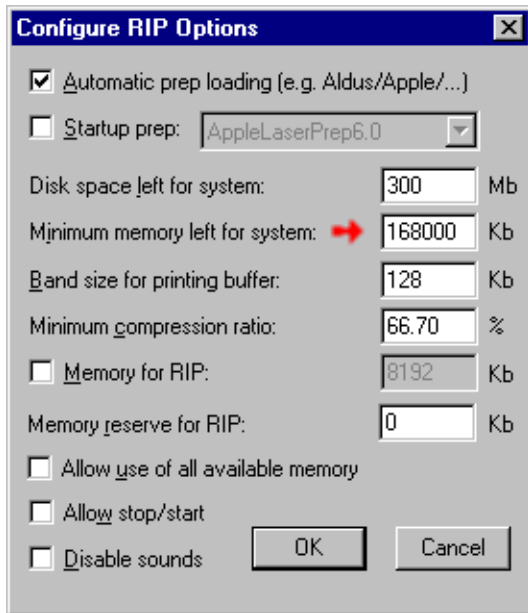
July 18, 2001

### Background and Important Points to Keep in Mind

When running the Navigator RIP on a Win2K machine we recommend that you have at least 256Mb of RAM and are running Service Pack 2. Navigator must be installed on the Win2K machine while logged in as Administrator.

### WriteFaultError when imaging from Navigator under Win2K

At least two thirds of the available RAM must be given to the system. For example, if you have 256Mb of RAM, *Memory left for system* must be 168Mb/168000Kb. (See below).



If you have 512Mb of RAM, give the system 338Mb/338000Kb.