

# Connecting SCSI output devices to Windows 2000

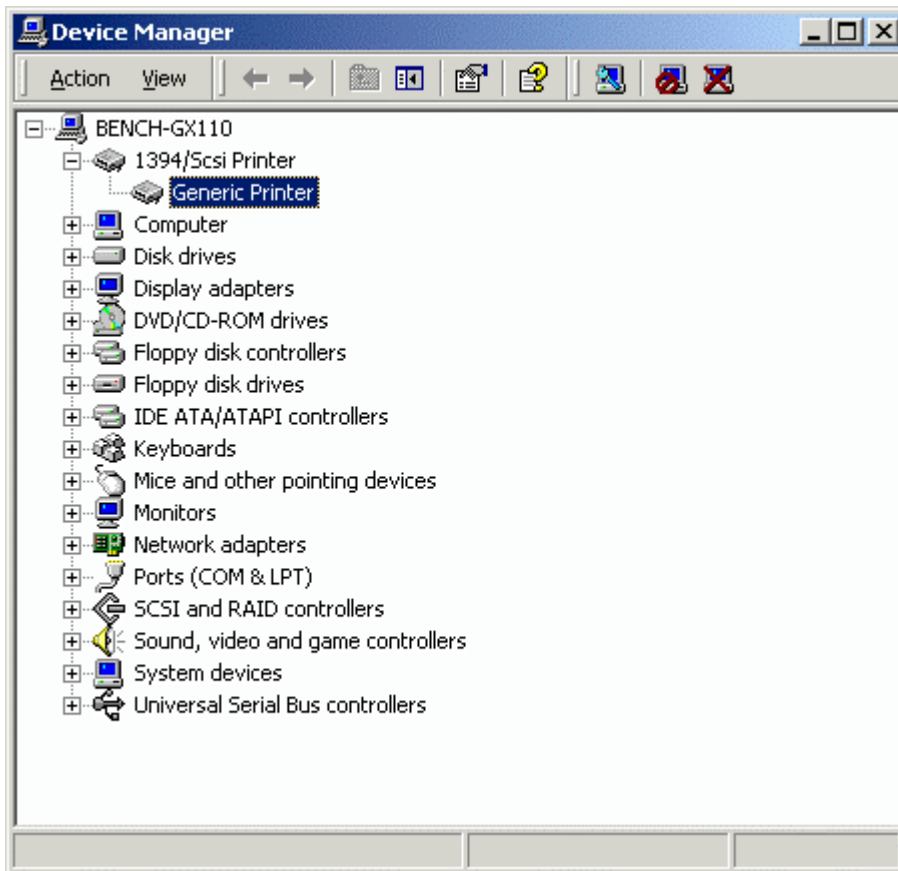
## June 25, 2001

For some of the SCSI output devices that Xitron drives, Windows 2000 will install a "generic SCSI printer" driver. If this happens, this keeps the Xitron SCSI class driver from getting access to the output device.

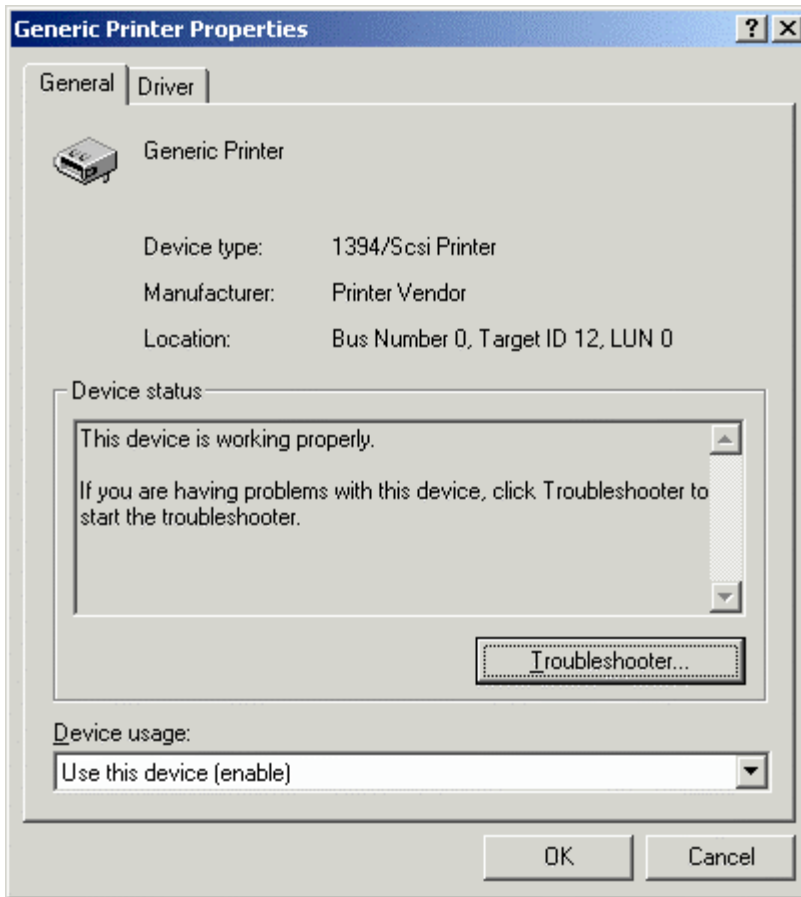
The normal sequence is that the first time that Windows 2000 boots and finds the SCSI device attached, the "New Hardware Wizard" will display a message that it is finished installing new hardware and the user will be prompted to re-boot.

The current solution is to disable the printer driver installed by the New Hardware Wizard. Follow these steps:

1. Start the device manager. There are several ways. Here is one: right click on the "My Computer" icon and select "Properties". Select the "Hardware" property page tab. Click on the "Device Manager..." button in the "Device Manager" section. You will get a device tree similar to the one shown below. Note that the "1394/Scsi Printer" device is listed at the top. This is the device installed as described previously and the one that needs to get disabled.



2. Double click on the "Generic Printer" line and you will get the following dialog. The bottom item is: "Device usage". Change this from "Use this device (enable)" to "Do not use this device (disable)".



3. Reboot the PC. The next time that Windows 2000 boots, the Xitron SCSI class driver will find the device and have the required control over the device.