

# Punch Centering on Agfa Drum Devices

## Xitron Navigator Technical Note

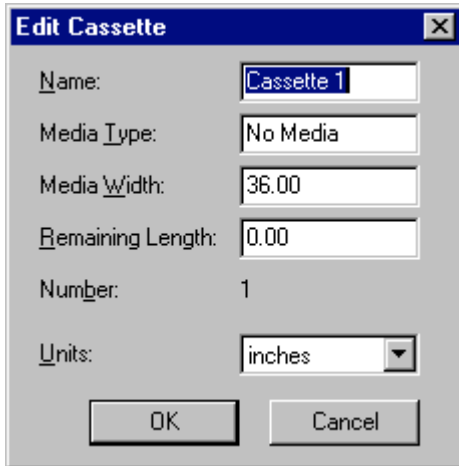
March 26, 2001

The punches on an Agfa drum device are positioned at the feed and takeup sides of the drum, that is, on either side of the drum's circumference. They are centered on the drum width. In this manner, they are also centered on the width of the media – if it is properly loaded in the supply cassette. Centering an image to the punches on an Agfa drum device (AV25 AV36, AV44 etc.) should, therefore, be as easy as centering the image on the width of the media.

The problem is that the accuracy of the position of the punches in the center of the media. It is especially important that images be exactly centered on the punches, but it is not so easy to design a system that will compensate for variations in the actual size of the film and other factors that can effect the position of punches and images. For this reason, there is a method for adjusting the position of the image. By following the steps below you should be able to position an to the exact center of the punches on an Agfa drum device.

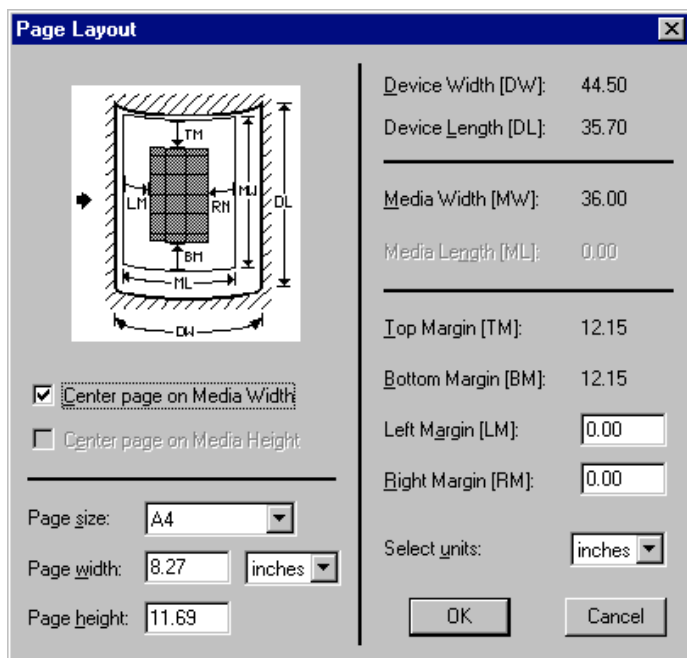
In order to perform these steps you should have a good working knowledge of the RIP and the various steps necessary to create and modify Page Setups and cassette settings in the RIP. For in-depth information on these RIP functions please review the RIP Users Guide that is provided on the RIP Installation CD.

1. Create a Cassette definition that has the proper media width specified. The example below shows a media width of 36 inches.



2. Make a Page Setup for the desired device.
3. Associate the Cassette you have created with the Page Setup.

4. Within the Page Setup window you will find a “Page Layout” button. Select it to enter the Page Layout window (see the example below).



**Note:** in the example Page Layout window above, the arrow to the left of the illustrated drum represents the direction of film travel. MW represents the media width and ML is the media length, or drum circumference. You will notice that the LM (left margin) and RM (right margin) are not relative to the media width. This can be confusing but will be an important factor for positioning jobs.

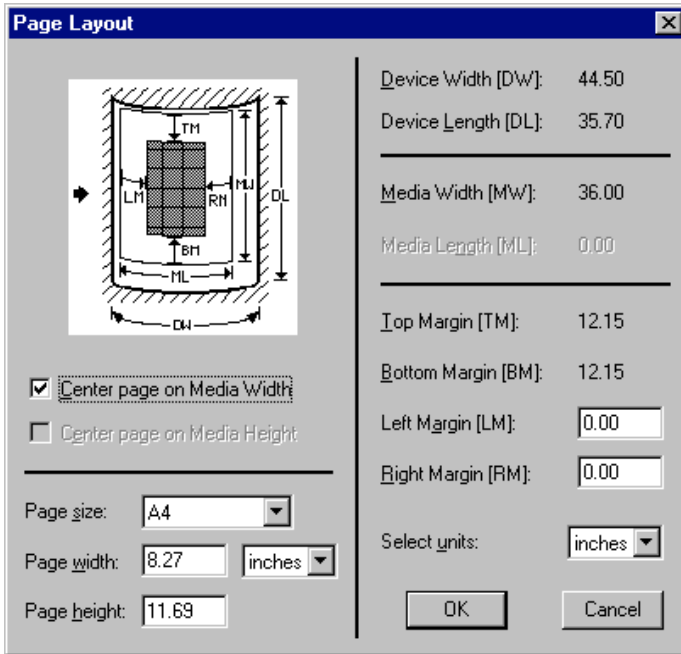
5. Turn on “Center page on Media Width.” This will lock in the top and bottom margins, because these are the margins used for moving the image “left to right” relative to the punch. Do not be concerned that the page size or the margins do not match your specific needs. These are adjusted by the RIP, on the fly, based on the size of image you are sending to the RIP.
6. Send a file to the RIP using this Page Setup. Image the file and note the position of the image relative to the punches. **DO NOT BE CONCERNED ABOUT DISTENCE UP AND DOWN FROM THE PUNCHES.** The offset from the punches will be addressed later in this tech note.

**IMPORTANT:** if the image is too far to the left of the punches you will need to decrease the size that you have specified for the media width. If the image is too far to the right of the punch you will have to increase the size that you have specified for the media width.

Agfa drum devices can only image to within 3/10 of an inch of the actual media size. That is, if you are using 36 inch media, the imagesetter is only capable of imaging 35.7 inches of that media. If you find that you have to increase the specified media size beyond the imageable area (media width minus 3/10 of an inch) it may be necessary to place a limiting value in the RIP. If you do have to set this value high and it produces an error when imaging a file, call your dealer or Xitron support to learn the proper method for setting a max. media width in your RIP.

7. Enter a new value for your media width. Higher to move the image to the left, lower to move it to the right.
8. Send a NEW file using the same Page Layout with the new media width in the cassette setting and image the file.
9. Verify that the image has moved and repeat the process using trial and error until you have centered the image properly.

To position an image “up and down” relative to the punches, you will use many of the same windows and techniques above. However, the only value that you will have to change is the “Left Margin [LM]” value shown in the sample Page Layout window shown below.



Increasing the value of the Left Margin will move the image away from the punches. Decreasing the Left Margin value will move the image closer to the punches. You can use a negative value.

If it is necessary to have different offsets from the punches for different plates or presses, it will be necessary to have a different Page Setup with different margin settings for each required offset.

If errors occur when values are used to move images up and down from the punches, it may be necessary to enter some limiting values in the RIP. If this happens it may be necessary to call your dealer or Xitron support to learn the proper method for setting a max. media depth in your RIP.