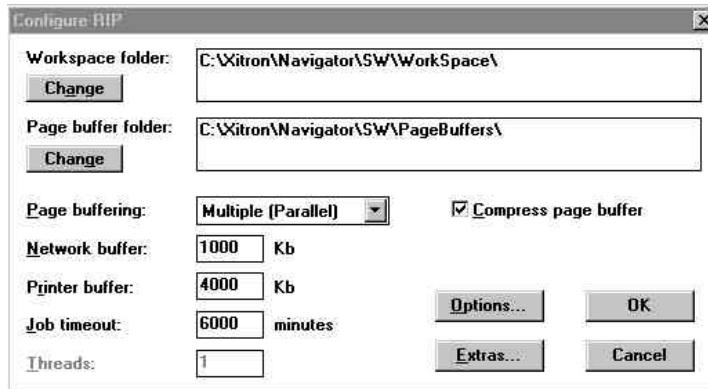


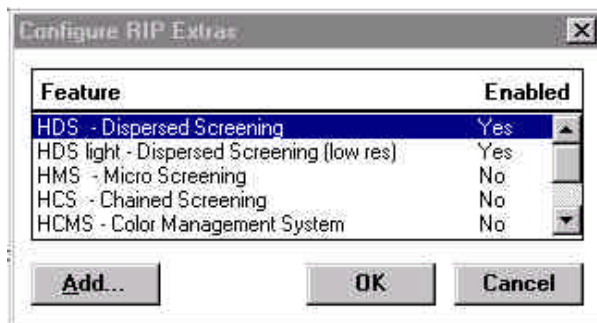
## Installing the HDS Screens Option

By following these simple steps you can add HDS screens to your RIP.

1. Click on the XitronRIP menu and select Configure RIP from the menu. The following window will appear.



2. Press the Extras button to bring up the following dialog window.



3. Select the HDS feature and press the Add button. The following window will appear.



4. Enter the password that you have been given and press OK until you are back to the normal RIP screen.  
NOTE: passwords are specific to the security dongle that they were issued to. They will not work with a different dongle.
5. At this point you will be able to choose from the various HDS screens when you set screening in the RIP's Page Setup options.