



## Fixed Length on Capstan Devices

### Xitron Navigator Technical Note

July 9, 2002

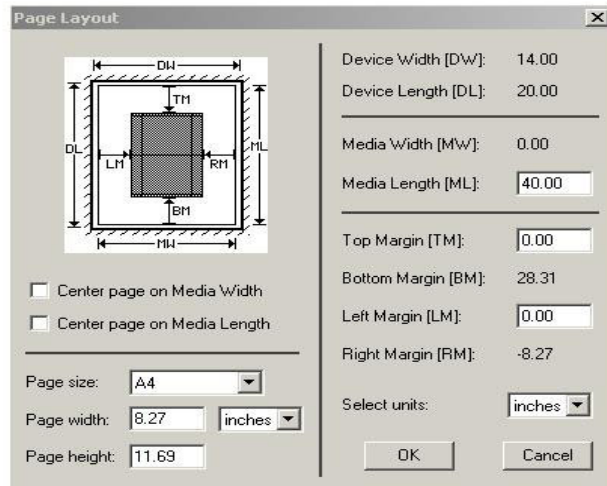
Recently Xitron's Engineering Department has revised the way length is handled on capstan devices. This new feature now allows the user to set a fixed media length for output which has come in handy for customers using plate material and desiring to have jobs image on a fixed length of media. For some end users though this addition of functionality to our plugins has caused confusion. This tech note will explain how to configure a page setup with a capstan device to behave "normally," that is, as a device of "infinite" length rather than a fixed length.

1. Open the Page setup you wish to modify.
2. Click on the Configure Device button and enter a value for Max Page Depth (in points) that will be large enough for you longest potential job. In the example below we've chosen an Agfa Accuset 1500 and decided the longest job we would ever need to print would be less than or equal to 40" long ( $40 \times 72 = 2880$ ). Click OK when you're done.

A screenshot of the "Configure Agfa" dialog box. The dialog has a title bar with "Configure Agfa" and a close button. It contains several fields and checkboxes. The "Max Page Width (points)" field is set to 0. The "Max Page Depth (points)" field is set to 2880. The "Mux String" field is empty. The "PB2 Interface Card" field is a dropdown menu. The "Spindle Selection" field is a dropdown menu set to "Disabled". There is a "Punches" section with a group box containing four checkboxes: "Rip Controls Punch", "Enable Head Punch", "Enable Tail Punch", and "Enable Side Punch". To the right of this group box are three checkboxes: "Wrong Reading", "Single Beam (disables Dual Beam)", and "Plate Mode (Enforces right and bottom margins)". At the bottom are "OK" and "Cancel" buttons.

Max Page Width (points)	0
Max Page Depth (points)	2880
Mux String	
PB2 Interface Card	
Spindle Selection	Disabled
<b>Punches</b>	
<input type="checkbox"/> Rip Controls Punch	<input type="checkbox"/> Wrong Reading
<input type="checkbox"/> Enable Head Punch	<input type="checkbox"/> Single Beam (disables Dual Beam)
<input type="checkbox"/> Enable Tail Punch	<input type="checkbox"/> Plate Mode (Enforces right and bottom margins)
<input type="checkbox"/> Enable Side Punch	

3. Now go to Page Setup Window and press the Page Layout button at the bottom of the window. In Page Layout we will change the Media Length to 40" in keeping with our example.



4. Click OK to save your changes here and also when you are closing out the Page Setup window. Steps 3 and 4 will have to be repeated for every Page Setup that is not intended for fixed length output.

These settings, along with the default setting in pb2diag for Ignore Bottom Margin turned on, will now allow you to print a job that will image up to the value you've placed in Max Page Depth and Media Length (we have not described the Ignore Bottom Margin settings here as they default to the proper settings).

To recap, in our example we've decided the longest job we would ever need to image is 40" or less. Because this modification is specific to this Page Setup only you may need to edit or create other Page Setups similarly.