

Xitron TechNote



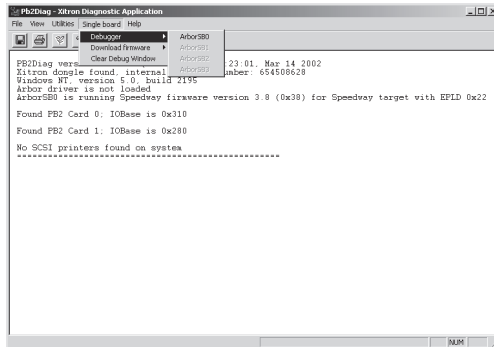
DeBug Generated from PB2Diag

Overview

When necessary in the process of troubleshooting issues in the Xitron hardware, i.e. card and cable, a Xitron Technician may ask you to generate a DeBug file. This file documents messages being passed through the Xitron hardware.

Creating the DeBug file

1. Launch PB2Diag. From the menu choose Single board > Debugger > ArborSB0 (or the appropriate board if a second is installed in the machine).



2. Place the cursor in the main window and type **debug 1 3** as below and press Enter.

