
Quick Reference for Epson VSD ProofReady Plugin

1 Introduction

This is a quick reference guide for the Epson VSD plugin 1.2r1 and is suitable for the following Epson printers:

- Stylus Pro 4000
- Stylus Pro 5500
- Stylus Pro 7600
- Stylus Pro 9600
- Stylus Pro 10000
- Stylus Pro 10600
- Stylus Photo 2200

The ProofReady plugin for Epson Variable Size Droplet printers is supplied with calibration profiles and pre-configured color setups that allow instant color management, hence the name *ProofReady*.

This document contains the following sections:

- “Supplied ProofReady profiles” details the calibration profiles and color profiles provided with the plugin.

- “Getting Started” describes how to produce color managed output using the supplied profiles.
- “Calibrating the printer” explains how to improve the quality of output by re-calibrating for the actual printer.

For further details on how to use the plugin, refer to the full manual, entitled *ProofReady Plugin for Epson Variable Size Droplet Printers*.

2 Supplied ProofReady profiles

The following table lists the ProofReady profiles supplied with the Epson VSD plugin. The profiles are available for selection from the **ProofReady** list, in the Page Setup window, shown in Figure 3.1, page 8. Paper types recommended for their use are shown in the table, together with the paper part numbers for an exact match.

Table 2.1 Epson VSD ProofReady profiles

ProofReady Profile (Device name)	Paper (part no.)	Screening
Epson 2200		
Premium Glossy 720/1440 (SP2200 VSD)	Premium Gloss (S041286)	HEDS2
Premium SemiGloss 720/1440 (SP2200 VSD)	Premium Semi-Gloss (S041331)	HEDS2
MkLk Enhanced Matte 720/1440 (SP2200 VSD)	Enhanced Matte (S041341)	HEDS2
Epson 4000		
Enhanced Matte 360 (SP4000)	Epson Enhanced Matte Paper (SO41725)	HDS Super Fine
Premium Glossy 250g 2880 (SP4000)	Epson Premium Glossy Photo Paper 250g (SO41315)	HDS Super Fine
Enhanced Matte 720/1440 (SP4000 VSD)	Epson Enhanced Matte Paper (SO41725)	HEDS2
Mitsu PRN Newsprint 720 (SP4000 VSD)	Mitsubishi Newsprint	HEDS2

Table 2.1 Epson VSD ProofReady profiles (*Continued*)

ProofReady Profile (Device name)	Paper (part no.)	Screening
Premium Glossy 250g 720/1440 (SP4000 VSD)	Epson Premium Glossy Photo Paper 250g (SO41315)	HEDS2
Premium Luster 250g 720 (SP4000 VSD)	Epson Premium Luster Photo Paper 250g (SO41737)	HEDS2
SemiMatte Proof 720/1440 (SP4000 VSD)	Epson Proofing Paper Semi- Matte (SO41724)	HEDS2
SWOP-cert SemiMatte Proof (SP4000 VSD)	Epson Proofing Paper Semi- Matte (SO41724)	HEDS2
Epson 5500		
Archival Matte 720 (SP5500 VSDbi)	Epson Archival Matte Paper (SO41339)	HDS Super Fine
Premium SemiGloss 720 (SP5500 VSDbi)	Epson Premium Semigloss Photo Paper (SO41327)	HDS Super Fine
Pro Glossy 720 (SP5500 VSDbi)	Epson Professional Glossy Paper (SO41430)	HDS Super Fine
Archival Matte 720/1440 (SP5500 VSD)	Epson Archival Matte Paper (SO41340)	HEDS2
Premium SemiGloss 720/1440 (SP5500 VSD)	Epson Premium SemiGloss Photo Paper (SO41328)	HEDS2
Pro Glossy 720/1440 (SP5500 VSD)	Epson Professional Glossy Paper (SO41457)	HEDS2
Epson 7600		
Ucm Enhanced Matte 2880 (SP7600)	Epson Enhanced Matte Paper (S041595)	HEDS1
Ucm Premium Glossy 250g 2880 (SP7600)	Epson Premium Glossy Photo Paper (250) (S041638)	HDS Super Fine
Ucm Glossy Photo Wt 2880 (SP7600)	Epson Glossy Paper Photo Weight (S041388)	HEDS1
Ucm SemiMatte Proof 2880 (SP7600)	Epson SemiMatte Proofing Paper (S041658)	HEDS1

Table 2.1 Epson VSD ProofReady profiles (*Continued*)

ProofReady Profile (Device name)	Paper (part no.)	Screening
Dye Glossy Paper Hvy 720 (SP7600 VSD)	Epson Glossy Hvy Wt (S041291)	HEDS2
Dye Pres Matte 720 (SP7600 VSD)	Epson Presentation Matte (S041295)	HEDS2
Dye SemiGloss Hvy 720 (SP7600 VSD)	Epson Semi-Gloss Hvy Wt (S041292)	HEDS2
Ucm Enhanced Matte 720/1440 (SP7600 VSD)	Epson Enhanced Matte Paper (S041595)	HEDS2
Ucm Glossy Photo Wt 720 (SP7600 VSD)	Epson Glossy Paper Photo Weight (SO41388)	HEDS2
Ucm Premium Glossy 250g 720/1440 (SP7600 VSD)	Epson Premium Glossy Photo Paper (250) (S041638)	HEDS2
Ucm SemiMatte Proof 720/1440 (SP7600 VSD)	Epson SemiMatte Proofing Paper (S041658)	HEDS2
Epson 9600		
Ucm Enhanced Matte 2880 (SP9600)	Epson Enhanced Matte Paper (S041595)	HEDS1
Ucm Glossy Photo Wt 2880 (SP9600)	Epson Glossy Paper Photo Weight S041388	HEDS1
Ucm Premium Glossy 250g 2880 (SP9600)	Epson Premium Glossy Photo Paper (250) (S041638)	HDS Super Fine
Ucm SemiMatte Proof 2880 (SP9600)	Epson SemiMatte Proofing Paper S041658	HEDS1
Dye Glossy Paper Hvy 720 (SP9600 VSD)	Epson Glossy Hvy Wt (S041291)	HEDS2
Dye Pres Matte 720 (SP9600 VSD)	Epson Presentation Matte (S041295)	HEDS2
Dye SemiGloss Hvy 720 (SP9600 VSD)	Epson Semi-Gloss Hvy Wt (S041292)	HEDS2
Ucm Enhanced Matte 720/1440 (SP9600 VSD)	Epson Enhanced Matte Paper (S041595)	HEDS2

Table 2.1 Epson VSD ProofReady profiles (*Continued*)

ProofReady Profile (Device name)	Paper (part no.)	Screening
Ucm Glossy Photo Wt 720 (SP9600 VSD)	Epson Glossy Paper Photo Weight (S041388)	HEDS2
Ucm Premium Glossy 250g 720/1440 (SP9600 VSD)	Epson Premium Glossy Photo Paper (250) (S041638)	HEDS2
Ucm SemiMatte Proof 720/1440 (SP9600 VSD)	Epson SemiMatte Proofing Paper (S041658)	HEDS2
Epson 10000		
Arc Enhanced Matte 720/1440 (SP10000 VSD)	Epson Enhanced Matte Paper (S041595)	HEDS2
Arc Prem SemiGloss 720/1440 (SP10000 VSD)	Epson Premium SemiGloss Photo Paper (S041393)	HEDS2
Arc Premium Glossy 720/1440 (SP10000 VSD)	Epson Premium Glossy Photo Paper (S041390)	HEDS2
Dye Glossy Paper Hvy 720/1440 (SP10000 VSD)	Epson Glossy Paper Heavy Weight (S041291)	HEDS2
Dye Pres Matte 720/1440 (SP10000 VSD)	Epson Presentation Matte Paper (SO41295)	HEDS2
Dye SemiGloss Hvy 720/1440 (SP10000 VSD)	Epson SemiGloss Paper Heavy Weight (S041292)	HEDS2
Dye Glossy Photo 360/720/1440 (SP10000 VSDbi)	Epson Glossy Photo Paper	HDS Super Fine
Dye Pres Matte 720 (SP10000 VSDbi)	Epson Presentation Matte	HDS Super Fine
Dye Semigloss 720 (SP10000 VSDbi)	Epson Semigloss Photo Paper	HDS Super Fine
Epson 10600		
Arc Enhanced Matte 720/1440 (SP10600 VSD)	Epson Enhanced Matte Paper (S041595)	HEDS2
Arc Prem SemiGloss 720/1440 (SP10600 VSD)	Epson Premium SemiGloss Photo Paper (S041393)	HEDS2

Table 2.1 Epson VSD ProofReady profiles (*Continued*)

ProofReady Profile (Device name)	Paper (part no.)	Screening
Arc Premium Glossy 720/1440 (SP10600 VSD)	Epson Premium Glossy Photo Paper (S041390)	HEDS2
Dye Glossy Paper Hvy 720/1440 (SP10600 VSD)	Epson Glossy Paper Heavy Weight (S041291)	HEDS2
Dye Pres Matte 720/1440 (SP10600 VSD)	Epson Presentation Matte Paper (S041295)	HEDS2
Dye SemiGloss Hvy 720/1440 (SP10600 VSD)	Epson SemiGloss Paper Heavy Weight (S041292)	HEDS2
Ucm Enhanced Matte 720/1440 (SP10600 VSD)	Epson Enhanced Matte Paper (S041595)	HEDS2
Ucm Glossy Photo Wt 720/1440 (SP10600 VSD)	Epson Glossy Paper Photo Weight (S041388)	HEDS2
Ucm SemiMatte Proof 720/1440 (SP10600 VSD)	Epson SemiMatte Proofing Paper (S041658)	HEDS2

You can use the HEDS1 profiles with HDS screens, although they are optimized for use with HEDS1 screens. In this case, a warning states that the profile screen does not match the device screen, however the job will still be processed by the RIP.

3 Getting Started

The way in which you create a page setup depends on the Harlequin RIP™ version that you are using. In the Eclipse Release™ or later of the Harlequin RIP, instant color management is possible by simply selecting a ProofReady profile. See Section 3.1 on page 7 for details.

In former RIPs, instant color management is possible by selecting a supplied calibration profile that includes a default color setup. See Section 3.2 below for details.

3.1 Creating a page setup in Eclipse Release RIPs

To create a ProofReady page setup in the Eclipse Release or later of the Harlequin RIP, you simply need to select a ProofReady profile, as described in the procedure below.

For each numbered step of the procedure the corresponding numbers in Figure 3.1 highlight where choices are made in the New Page Setup dialog box.

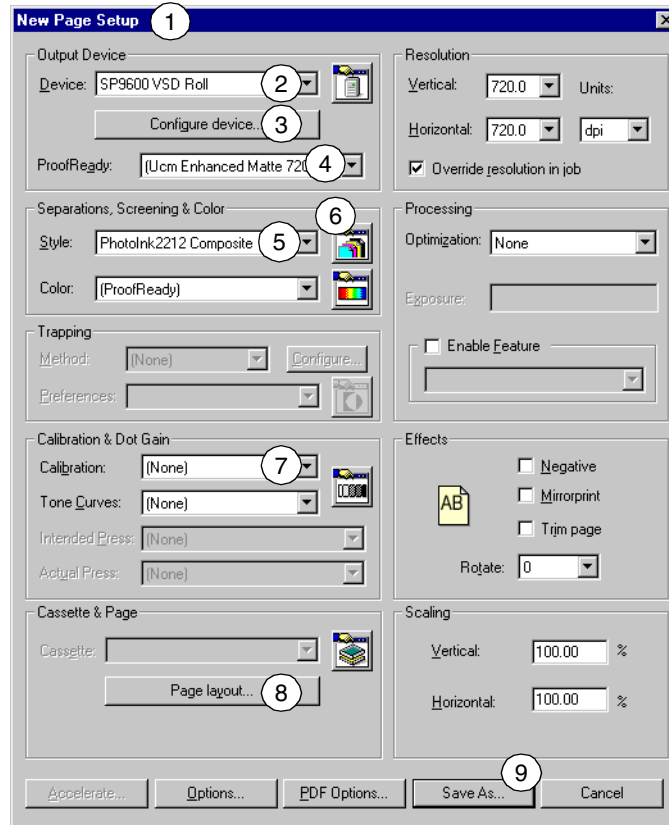


Figure 3.1 Creating a page setup in Eclipse Release or later RIPs

- ① Open the Page Setup Manager and click **New**.
- ② Choose the device required from the **Device** menu.
- ③ Click **Configure device** to modify configuration settings as desired. See the full manual for details of options.

- ④ Choose a profile from the **ProofReady** menu that matches the currently selected ink/paper type. The correct resolution for the profile is automatically selected and should not be changed.

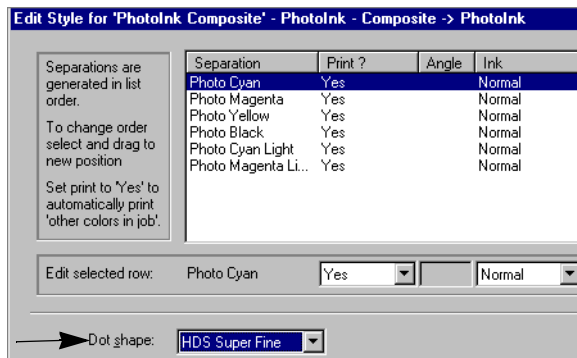
For example, (Ucm **Enhanced Matte 720**) is a profile for Epson Enhanced Matte Paper based on a resolution of 720 x 720 dpi using UltraChrome™ inks. See “Supplied ProofReady profiles” on page 2 for a full list of ProofReady profiles.

Note: When you select a ProofReady profile, a default (**ProofReady**) color setup is automatically selected in the **Color** menu. Choose (**None**) from the **ProofReady** menu if you wish to use a ColorPro color setup that you have created, as described in the main manual.

- ⑤ Choose a Separations, Screening and Color option from the **Style** menu. There is usually just one option available, which suits the style required by your output device.
- ⑥ If using a biplane device type, check in the Edit Style dialog box that screening is set to its default value of **HDS Super Fine**.

Otherwise skip to step ⑦.

To open the Edit Style dialog box, click the Separations Manager icon. Click **Edit** in the Separations Manager and check the screening option in the **Dot shape** list. Click **OK** twice to return to the Page Setup dialog box.



- ⑦ Choose (**None**) from the **Calibration** menu.

Note: Selecting a **ProofReady** profile includes a default calibration profile. For optimum results you can choose a calibration set that has been generated for the actual printer rather than for a reference printer. See “Calibrating the printer” on page 13 for details.

- ⑧ Click **Page Layout** to specify the positioning of the page, using the margin and centering controls.
Note: If you are using a sheet-fed device, refer to the main manual for details on how to control top and bottom margins.
- ⑨ Click **Save As** and enter a page setup name in the **Save As** text box. Click **Save** in the Save Setup dialog box and then **OK** in the Page Setup Manager.

You can now use this page setup when printing to produce color managed output.

3.2 Creating a page setup in pre Eclipse Release RIPs

To create a ProofReady page setup in versions of the Harlequin RIP prior to the Eclipse Release, you need to select a supplied calibration profile that includes a default color setup, as described in the procedure below.

For each numbered step of the procedure the corresponding numbers in Figure 3.2 highlight where choices are made in the New Page Setup dialog box.

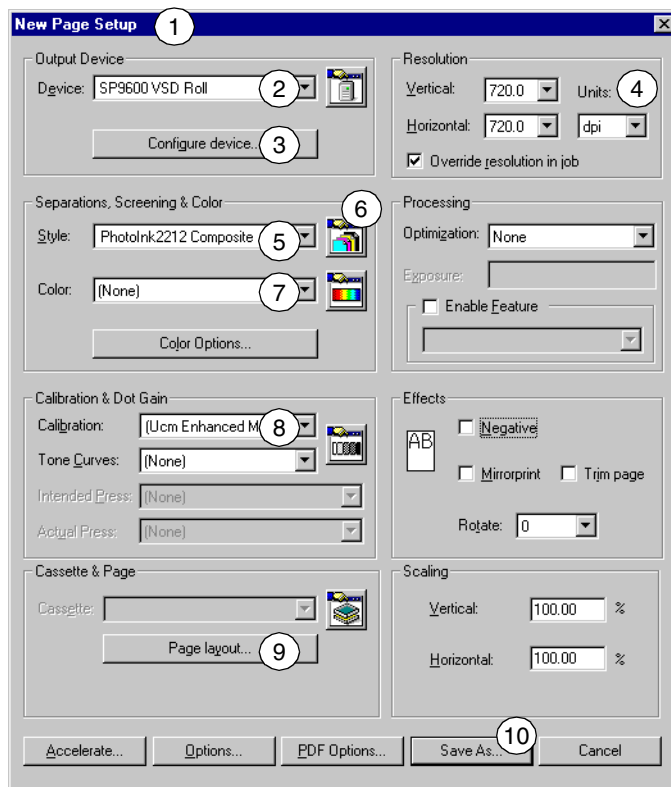


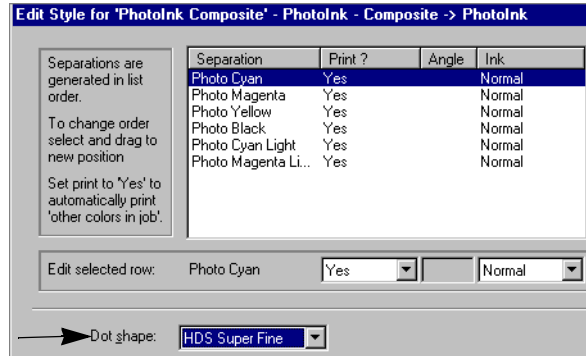
Figure 3.2 Creating a page setup in pre Eclipse Release RIPs

- ① Open the Page Setup Manager and click **New**.
- ② Choose the device required from the **Device** menu.
- ③ Click **Configure device** to modify configuration settings as desired. See the full manual for details of options.
- ④ Choose the desired resolution from the **Vertical** menu. This sets the **Horizontal** resolution to be the same. For example, if you choose 1440 x 1440, this is set to 1440 x 720 when your file is processed. See the full manual for details.

- ⑤ Choose a Separations, Screening and Color option from the **Style** menu. There is usually just one option available, which suits the style required by your output device.
- ⑥ If using a biplane device type, check in the Edit Style dialog box that screening is set to its default value of **HDS Super Fine**.

Otherwise skip to step ⑦.

To open the Edit Style dialog box, click the Separations Manager icon. Click **Edit** in the Separations Manager and check the screening option in the **Dot shape** list. Click **OK** twice to return to the Page Setup dialog box.



- ⑦ Choose **(None)** from the **Color** menu.

Note: Selecting a calibration profile or calibration set includes a default color setup. You can choose an option from the **Color** menu if you wish to use a color setup that you have previously created. See the full manual for details on creating a color setup.

- ⑧ Choose a profile from the **Calibration** menu that matches the currently selected ink/paper type and resolution (as specified in step ④).

For example, (Ucm **Enhanced Matte 720**) is a profile for Epson Enhanced Matte Paper based on a resolution of 720 x 720 dpi using UltraChrome™ inks. See “Supplied ProofReady profiles” on page 2 for a full list of supplied calibration profiles.

For optimum results you can choose a calibration set that has been generated for the actual printer rather than for a reference printer. See “Calibrating the printer” on page 13 for details.

- ⑨ Click **Page Layout** to specify the positioning of the page, using the margin and centering controls.
Note: If you are using a sheet-fed device, refer to the full manual for details on how to control top and bottom margins.
- ⑩ Click **Save As** and enter a page setup name in the **Save As** text box. Click **Save** in the Save Setup dialog box and then **OK** in the Page Setup Manager.

You can now use this page setup when printing to produce color managed output.

4 Calibrating the printer

It is recommend that you calibrate the printer for each device type and paper/resolution that you use. The calibration procedure should be done according to the instructions given below, depending on the version of RIP you are using.

4.1 Eclipse Release calibration procedure

To ensure accurate calibration, it is recommended that three targets are printed and measured. For subsequent recalibrations, an accurate profile can be achieved with one pass, as described in Section 4.3 on page 16. Before you begin calibrating, load the correct paper and initialize the printer according to the manufacturer's instructions.

Print and measure an initial target

1. Create a page setup in the Harlequin RIP with the following options:
 - **Device**—select the correct device
 - **ProofReady**—select (**None**)
 - **Calibration**—select the paper/resolution type
2. In the Harlequin RIP, click **Output > Print Calibration** to open the Print Calibration window. From the list choose your page setup then click **Print uncalibrated target**.

3. Measure the printed target with *Genlin*, or your preferred calibration program. *Genlin* is installed with the Harlequin RIP and is described in the *Harlequin RIP OEM Manual*.
4. In the Harlequin RIP, click **Output > Calibration Manager** to open the Calibration (Dot Gain) Manager. In the Manager click **Device** and select the correct device, and then click **New** to open the Edit uncalibrated target for... window.
5. In Edit uncalibrated target for..., click **Profile** and select the correct paper/resolution type. All other options should be left at their default settings (ensure **Force solid colors** remains unchecked).
6. In the **Name** field, enter an appropriate name for the initial profile, for example `Ucm Enhanced Matte 720-1` and click **Import > Import** to read the calibration data.
7. Click **OK** until all open windows are closed.

Print and measure a second target

1. Open your page setup (the one you used to print the initial target). From the **Calibration** list, select the calibration profile you just created (`Ucm Enhanced Matte 720-1`) then click **OK** to close the page setup window.
2. Open the Print Calibration window. Select your page setup and click **Print calibrated target** (note this time you are selecting *calibrated* target). Measure the printed target.
3. Open the Calibration (Dot Gain) Manager. Select the appropriate device and choose the calibration profile that you made with the initial target.
4. Click the **Copy** button to create a duplicate of the profile. From the list select the copy and click **Edit from calibrated target** to open the Edit calibrated target for... window.
5. Change the name of the profile to `Ucm Enhanced Matte 720-2` and click **Import > Import** to add the calibration set.
6. Click **OK** until all open windows are closed.

Print and measure a final target

1. In the RIP, open your page setup and from the **Calibration** list select `Ucm Enhanced Matte 720-2`. Click **OK** to close the window.

2. Open the Print Calibration window. Select your page setup and click **Print calibrated target**. Measure the target with *Genlin* or your favorite calibration program.
3. Open the Calibration (Dot Gain) Manager. Select the device and the calibration set you created for the second target.
4. Click the **Copy** button to create a copy of the profile. Select the copy and click the **Edit from calibrated target** button.
5. Name the profile `Ucm Enhanced Matte 720-F`, to indicate it is the final calibration set. Click **Import** to read the calibration data, and click **OK** to add the calibration set to the Calibration Manager. You should remove all the intermediate calibration sets from the Calibration Manager to avoid choosing the wrong profile in a page setup.
6. Modify your page setup so that it uses the final calibration set.

4.2 Calibration procedure for pre Eclipse Release RIPs

The calibration procedure described here is for supported pre Eclipse Release RIPs. Perform the calibration procedure for each device type and paper/resolution that you use. Recalibrate the printer at regular intervals to maintain accuracy, as described in Section 4.3 on page 16. Before beginning a calibration, load the correct paper and initialize the printer according to manufacturer's instruction.

1. Create a page setup in the Harlequin RIP with the following options:
 - **Device**—select the correct device
 - **Calibration**—select the paper/resolution type
2. In the Harlequin RIP, click **Output > Print Calibration** to open the Print Calibration window. From the list shown, choose your page setup then click **Print uncalibrated target**.
3. Measure the printed target with *Genlin*, or your preferred calibration tool. *Genlin* is installed with the Harlequin RIP and is described in the *Harlequin RIP OEM Manual*.

4. In the Harlequin RIP, click **Output > Calibration Manager** to open the Calibration (Dot Gain) Manager. In the Manager, click **Device** and select the correct device, and then click **New** to open the Edit uncalibrated target for... window.
5. In the Edit uncalibrated target for... window click **Profile** and select the correct paper/resolution type. All other options should be left at their default settings (ensure **Force solid colors** remains unchecked).
6. In the **Name** field enter a name for the profile, for example **Ucm Enhanced Matte 720** and click **Import > Import** to read the calibration data, and then click **OK** until all open windows are closed.
7. Modify your page setup so that it uses the named calibration set.

4.3 Recalibrating the printer

You should periodically recalibrate the printer to ensure consistent output results, as follows:

1. Click **Output > Print Calibration** to open the Print Calibration window. Select the appropriate page setup and click **Print calibrated target**. Measure the printed target.
2. In the RIP, click **Output > Calibration Manager** to open the Calibration (Dot Gain) Manager window and select the calibration set used in the page setup.
3. Click **Edit from calibrated target** to open the Edit calibrated target for... window. Click **Import > Import** to read the calibration data and **OK** to save the profile. You may want to enter a new name for the profile to indicate it is an updated profile, for example **Ucm Enhanced Matte 720-Date..**
4. Modify your page setup so that it uses the new calibration set.

Copyright © 2001-2004 Global Graphics Software Ltd. All rights reserved. ProofReady is a trademark of Global Graphics Software Limited. The manual *ProofReady Plugin for Epson Variable Size Droplet Printers* lists full copyright and trademark details for Global Graphics and third parties.