
ProofReady Plugin - Quick Reference Guide

1 Introduction

Unlike previous versions of the Epson plugin, the ProofReady plugin for Epson printers, version 3.1, is supplied with calibration sets and pre-configured color setups that allow instant color management, hence the name ProofReady.

This document contains the following sections:

- “Supplied calibration sets and profiles” details the calibration sets and profiles provided with the plugin.
- “Getting Started” describes how to produce color managed output using the supplied profiles.
- “Calibration” explains how to improve the quality of output by re-calibrating for the actual printer.

For further details on how to use the plugin, refer to the full manual, entitled *ProofReady Plugin for Epson Printers*.

2 Supplied calibration sets and profiles

The table below lists the paper types for which calibration sets (and profiles) have been provided. They are available at resolutions of 720 x 720 dpi and 1440 x 720 dpi. The use of two screen sets is also supported; HDS Super Fine and EDS.

Note: Some paper types are named differently in different markets. The UK: and US: prefixes in the Paper Type column show where these differences are known.

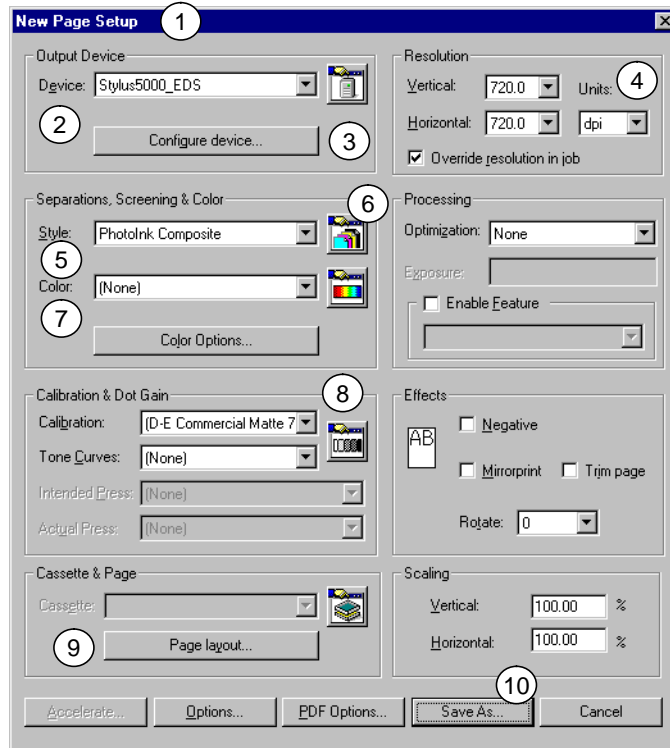
The name of the calibration set appearing in ScriptWorks is the text that appears in typewriter font in the Paper Type column followed by the resolution, all enclosed in parentheses. For example, a calibration set for Epson Photo Paper at 720 dpi is (**Photo Paper 720**).

Paper Type	Part Number	300000	500000	700000	900000	750000	950000
Epson Photo Quality Ink Jet Paper PQ Ink Jet Paper	S041048, S041061, S041062, S041067, S041068, S041069, S041070, S041079, S041171	•					
UK: Epson Photo Quality Glossy Paper US: Epson Glossy Paper PQ Glossy Paper	S041123, S041124, S041125, S041126, S041133, S041151	•					
Epson Photo Paper Photo Paper	S041134, S041140, S041141, S041142, S041143, S041145, S041156, S041271, S041272	•					
UK: Epson Glossy Photo Paper (Heavyweight) US: Epson Glossy Paper (Heavyweight) Glossy Photo Hvywt	S041224, S041225, S041226, S041227			•			
Dupont/EPSON Commercial Matte Proofing Paper D-E Commercial Matte	S041201, S041202, S041203, S041204		•	•			
Dupont/EPSON Commercial Proofing Paper D-E Comm Proof	S041160, S041161		•				
Epson Glossy Paper - Photo Weight Glossy Photo Weight	S041388, S041389					•	
Epson Premium Glossy Photo Paper PGlossy Photo Paper	S041390, S041392					•	

3 Getting Started

The following procedure demonstrates how instant color management is possible when selecting a supplied calibration set that includes a default color setup.

For each numbered step of the procedure the corresponding numbers highlight where choices are made in the New Page Setup dialog box.

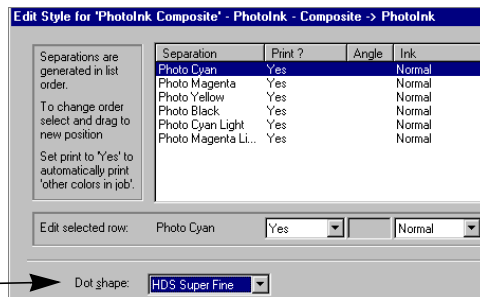


- ① Open the Page Setup Manager and click **New**.
- ② Choose the device required from the **Device** menu.
- ③ Click **Configure Device** to modify configuration settings as desired. See the full manual for details of options.
- ④ Choose the desired resolution from the **Vertical** and **Horizontal** menus.
- ⑤ Choose either **CMYK Composite** (for Epson Stylus Color 3000) or **PhotoInk Composite** (for all other devices) from the **Style** list.

⑥ If using HDS screening, check in the Separations Manager dialog box that screening is set to its default value of **HDS Super Fine**.

Otherwise skip to step ⑦.

To open the Separations Manager dialog box, click the Separations Manager icon. Click **Edit** in the Separations Manager dialog box and check the screening option in the **Dot shape** list. Click **OK** twice to return to the Page Setup dialog box.



⑦ Choose (**None**) from the **Color** list.

Note: In this version of the plugin, selecting a calibration set includes a default color setup. You can also choose a previously created color setup from the **Color** list. See the full manual for details on creating a color setup.

⑧ Choose a calibration set from the **Calibration** list which matches the paper type and resolution (as specified in step ④) being used.

For example, (**D-E Commercial Matte 720**) is a reference calibration set for Dupont/Epson Commercial Matte Proofing Paper based on a resolution of 720 x 720 dpi. See “Supplied calibration sets and profiles” on page 1 for a full list of supplied calibration sets.

For optimum results you can choose a calibration set that is generated for the actual printer rather than a reference printer. See Section 4 for details.

⑨ Click **Page Layout** to specify the positioning of the page, using the margin and centering controls.

Note: On a sheet-fed device, changing the values for **Top Margin** and **Left Margin** has no effect.

⑩ Click **Save As** and enter a page setup name in the **Save As** text field. Click **Save** in the Save Setup dialog box and then **OK** in the Page Setup Manager.

You can now use this page setup when printing to produce color managed output.

4 Calibration

The calibration sets provided are for reference printers. To obtain optimum output quality it is recommended that the first time you use a particular paper or change inks that you re-calibrate for the actual printer using the following procedure.

1. Load the printer with the correct paper.
2. Create a page setup for the device, as shown in the “Getting Started” procedure, ensuring that the name of the calibration set matches the paper and specified resolution.
3. Use the **Output > Print Calibration** menu option to open the Print Calibration dialog box.
4. Choose the desired page setup, as created in step 2 of this procedure and click **Print uncalibrated target**.
5. Use Genlin in the normal way to measure the printed target and create an import file.
6. In ScriptWorks, open the Calibration (Dot Gain) Manager dialog box using the menu option **Output > Calibration Manager**. Choose the **Device** and click **New**.
7. Choose the correct profile (the same name that you chose in step 2) from the **Profile** menu and click **Import**.
8. Enter a **Name** for the calibration set.

This can be the same name as the reference calibration set used in the page setup. The reference calibration sets are distinguished from user-generated calibration sets by the use of parentheses ().
9. Click **OK** twice to close the dialog boxes.

You can now return to the “Getting Started” section to create another page setup that uses this calibration set rather than the reference calibration set.

Copyright © 2000 Harlequin Limited. All rights reserved. ProofReady is a trademark of Harlequin Limited. The manual *ProofReady Plugin for Epson Printers* lists full copyright and trademark details for Harlequin and third parties.