

# Xitron LuxelF9000 v3.02b Plugin Install Notes

Wednesday, March 13, 2002

As an interim solution for the newer Sumo/LuxelF9000 recorders with updated resolutions, Xitron has released a new plugin to support both the new and old resolution sets. These plugins no longer require the FFEI passwords, but rather Xitron supplied passwords. We've included a tool on the CD for entering the new Xitron passwords.

Please follow these steps to get the new version of the plugin installed. The steps are outlined first, then a detailed description follows.

1. Install the Xitron Navigator RIP.
2. Install the LuxelF9000 plugin using the FFEI installer.
3. Enter the Xitron password.
4. (Optionally) update the required Windows system files.

Here are the details involved in each step

## Install the Xitron Navigator RIP

From the Xitron Navigator 5.5r1 installation CD, install the RIP. During the installation of the RIP you may select additional software only plugins, like the TIFF output plugin. Please note that the plugin for the FFEI Sumo/LuxelF9000 is not installed during this process.

## Install the Luxel F9000 plugin

Once the RIP is installed, insert the second CD labeled "LuxelF9000 v3.02b Plugin Installer". Setup.exe on the root of the CD should autorun. If it doesn't, please invoke setup.exe manually. This will invoke the FFEI component installer, with the familiar green screen and the Welcome dialog shown in Figure 1.

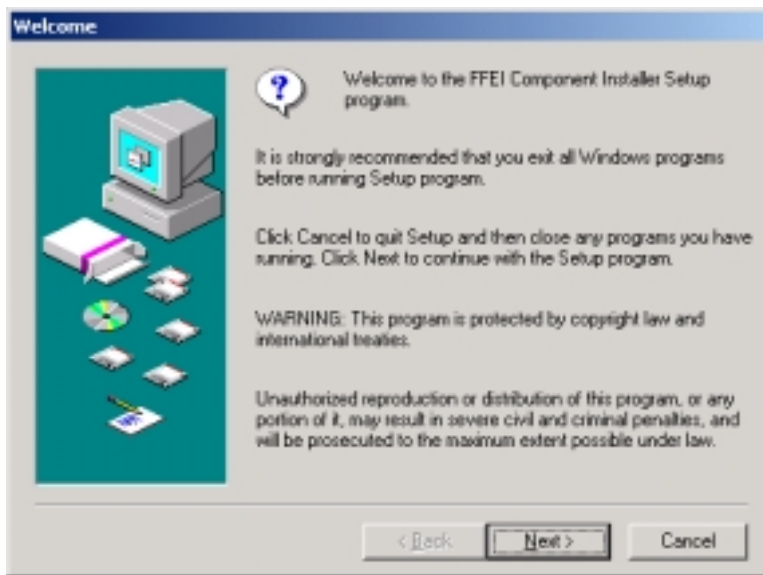
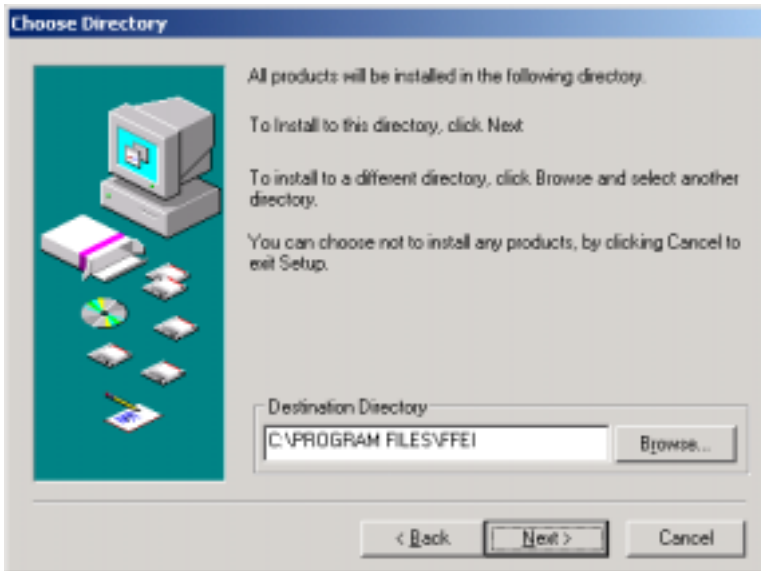


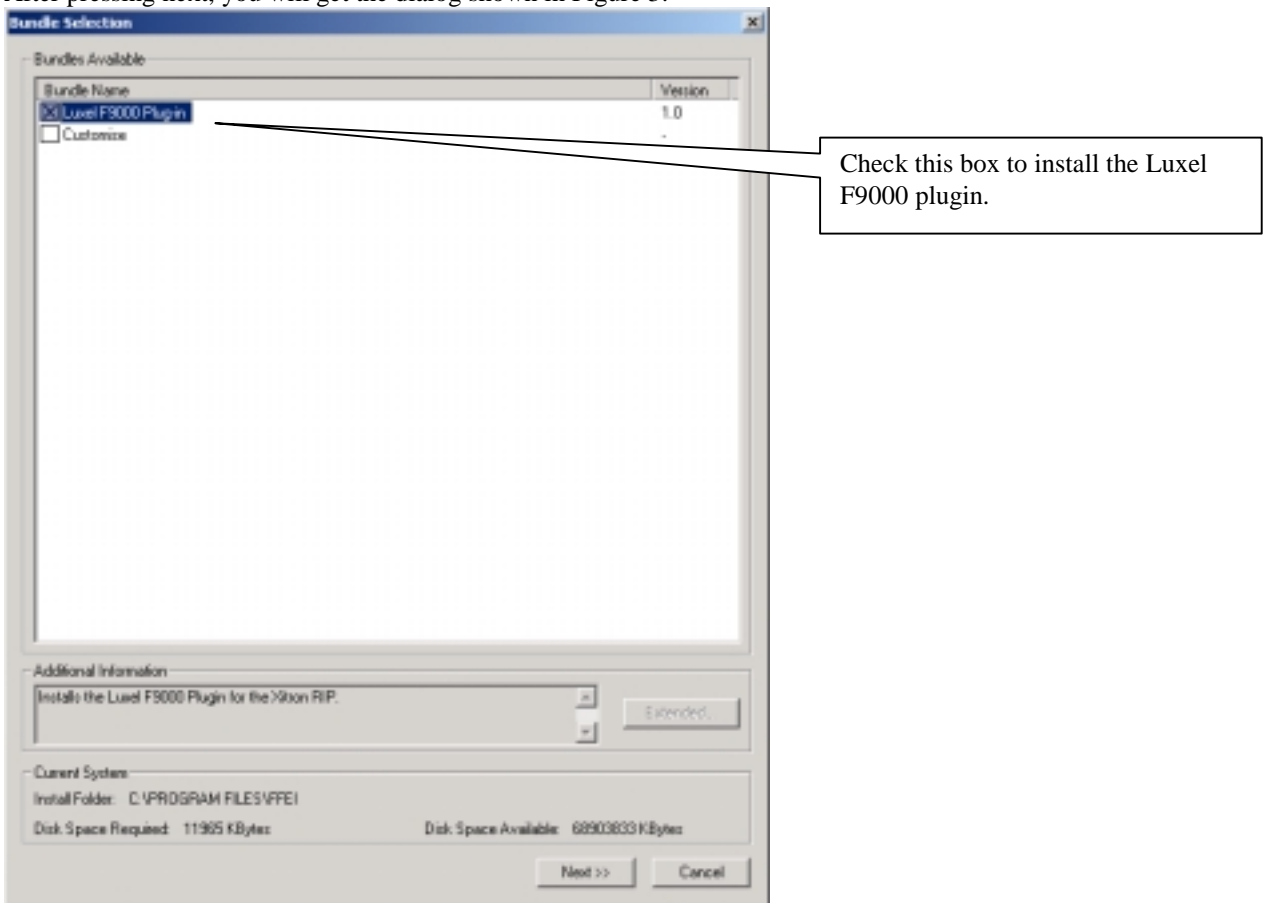
Figure 1

After the first welcome screen you will be prompted for the path where the FFEI tools are to be installed. This dialog shown in figure 2.



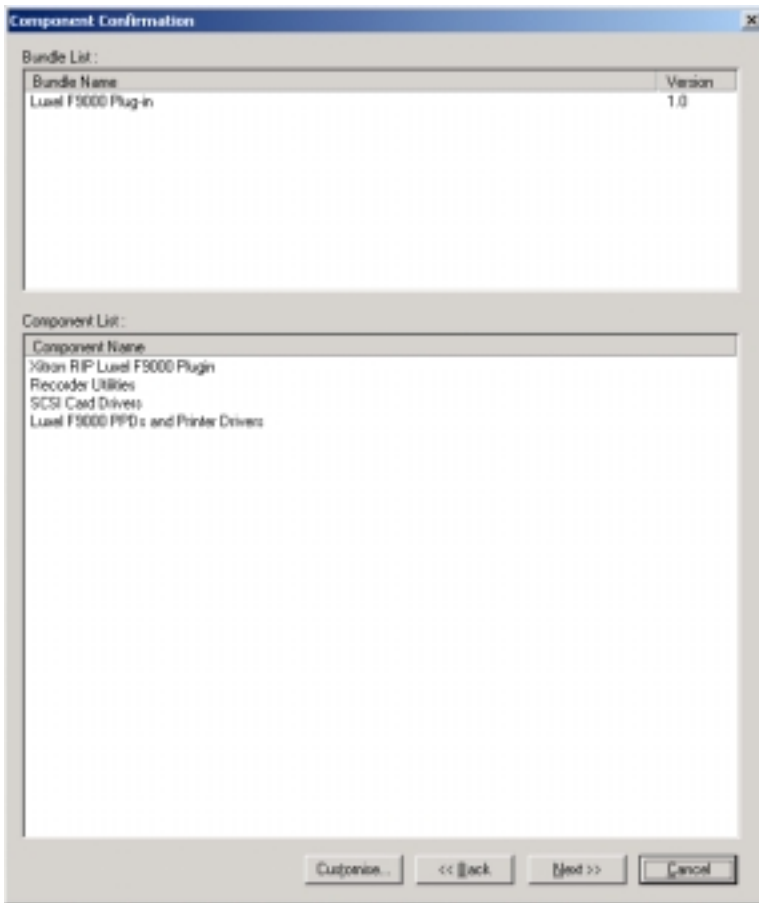
**Figure 2**

After pressing next, you will get the dialog shown in Figure 3.



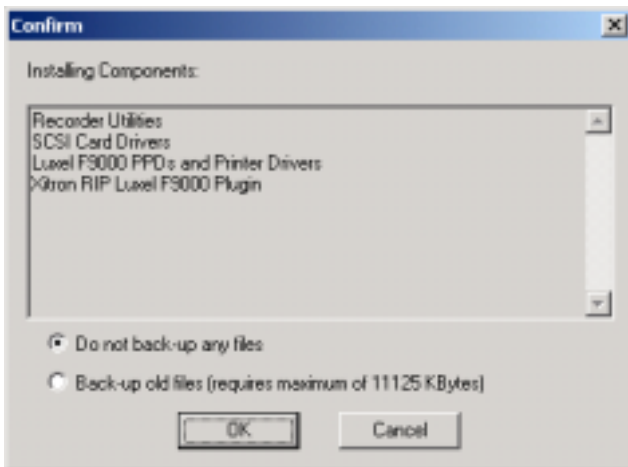
**Figure 3**

Press the button labeled “Next>>”. You will then see the dialog shown in Figure 4, showing the choices that you made.



**Figure 4**

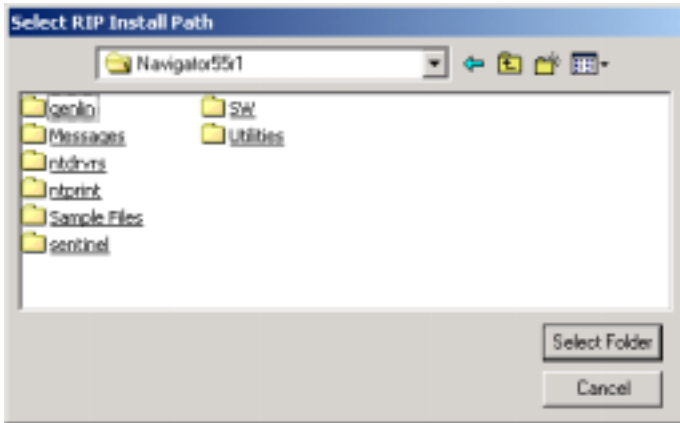
Press the button labeled “Next>>” and you will be presented with a final request to confirm your choices, as shown in Figure 5



**Figure 5**

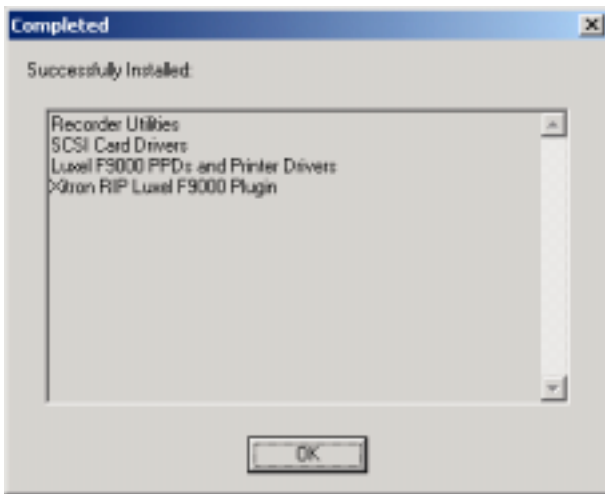
Press OK and the FFEI tools begin installing.

You need to tell the installer where you installed the RIP in first part of this process. If you accepted the default location, it will be C:\Xitron\Navigator55r1. Choose this path from the dialog shown in Figure 6.



**Figure 6**

Once the plugin is installed, you will see the dialog shown in Figure 7, confirming the success of the installation.



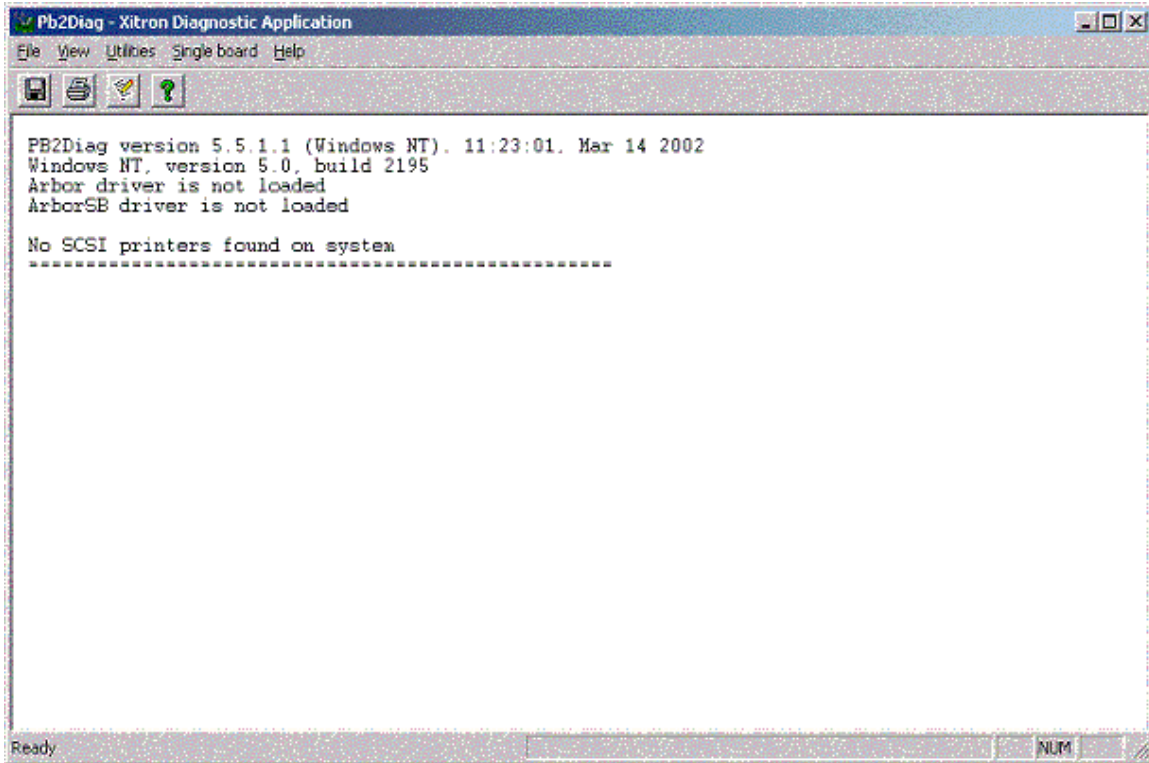
**Figure 7**

Once you press OK, you will be left with a final dialog showing the components that have been installed. Close this window to complete the installation of the plugin.

## Enter the Xitron Password

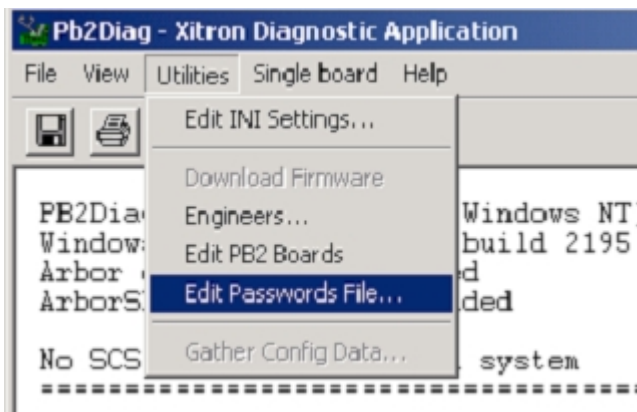
This version of the Sumo/Luxel F9000 plugin requires a password from Xitron. Passwords are stored in a file called “keys” at the path location “sw\ai” in the RIP’s folder. So if you have installed the RIP to C:\Xitron\Navigator55r1, you would find the keys file at “C:\Xitron\Navigator55r1\sw\ai”.

We have provided an updated version of the PB2Diag.exe utility, version 5.5.1.1. on the root of the CD which can be used to enter the password from Xitron. You can run PB2Diag.exe from the CD itself. When it starts you will see the screen shown in Figure 8.



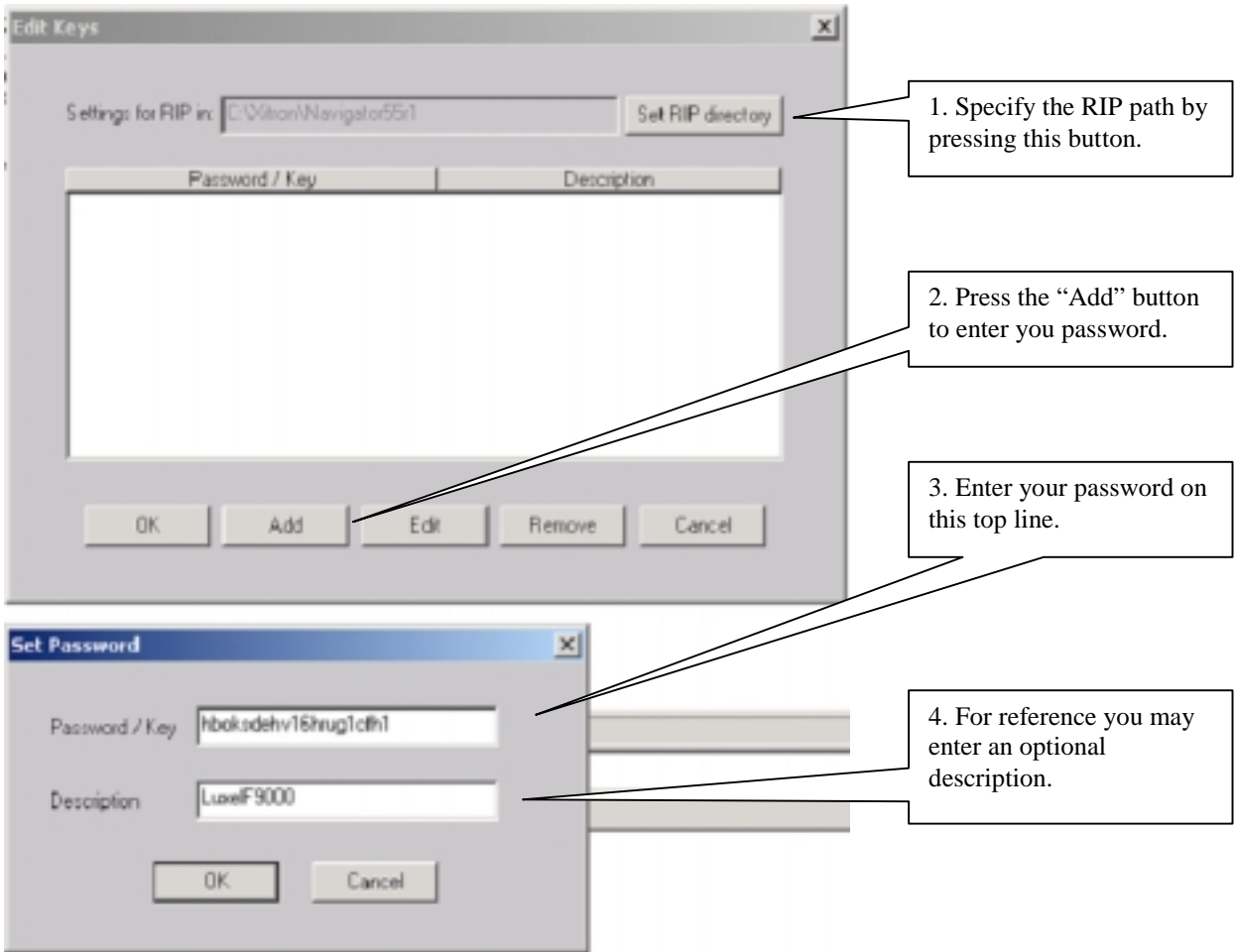
**Figure 8**

Select the menu item “Utilities->Edit Passwords File”, as shown in Figure 9.



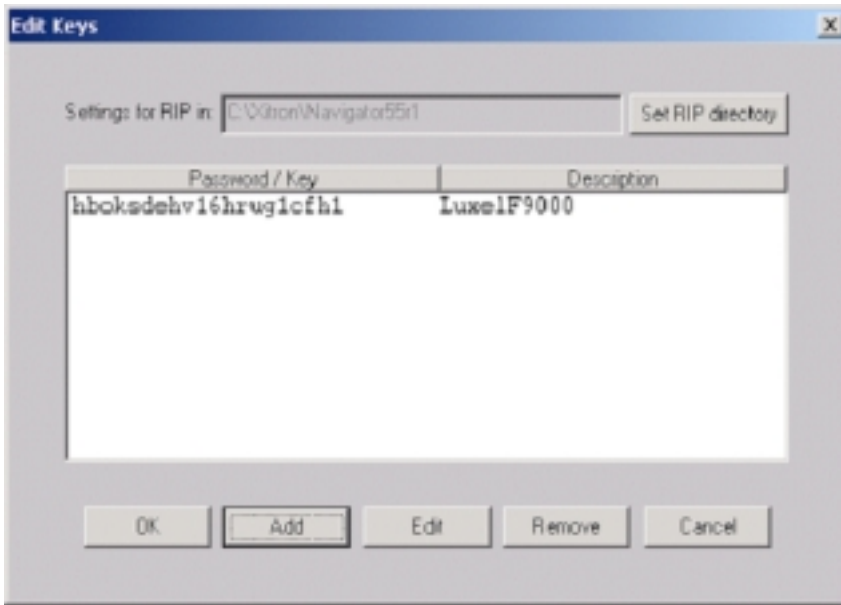
**Figure 9**

You will get a dialog that allows you to enter your supplied password. You will need to specify the RIP path here too. This is done by pressing the button “Set RIP Directory”. Having done this, press the “Add” button and you will get a secondary dialog where you can enter the password and an optional description. Figure 10 shows these dialogs as they will appear with a step by step description.



**Figure 10**

The dialog should now look similar to figure 11.



**Figure 11**

## **Update the Windows system files**

At this point you should try to run the RIP. If the Luxel F9000 plugin requires additional system files, you will get a warning message on the first boot. It will say that MSVCO60.dll is missing. If it does, you should run the Windows File Updated v104.exe file from the root of the CD. This will manage updating the systems files on your system.

The screens are shown in order below:

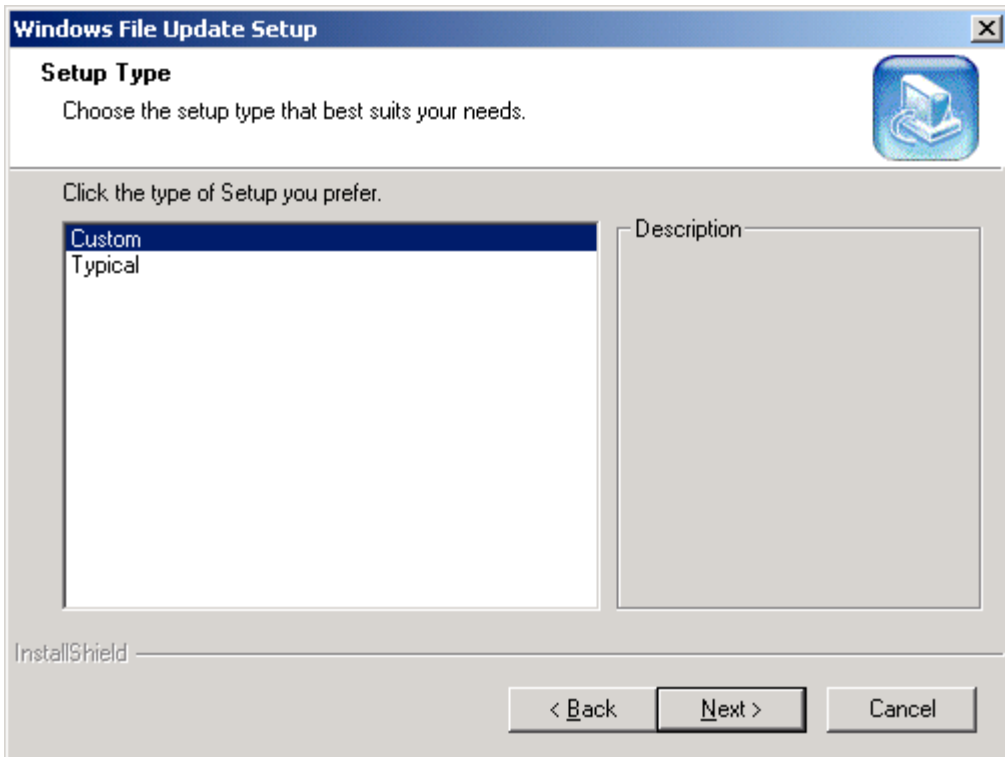


Figure 12

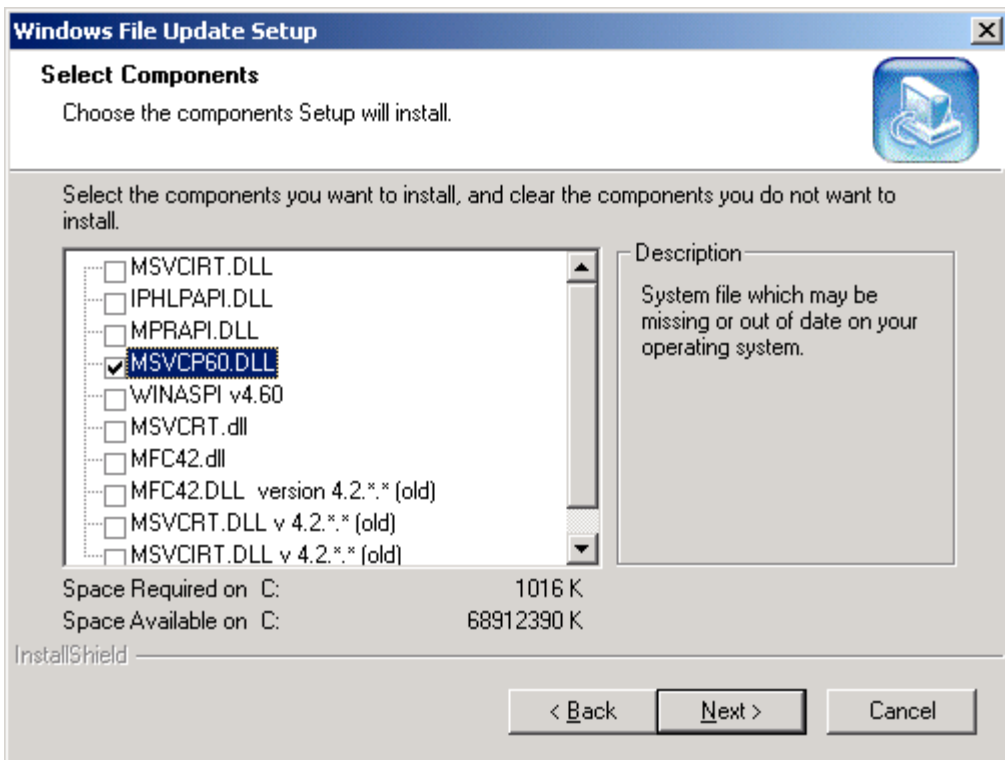
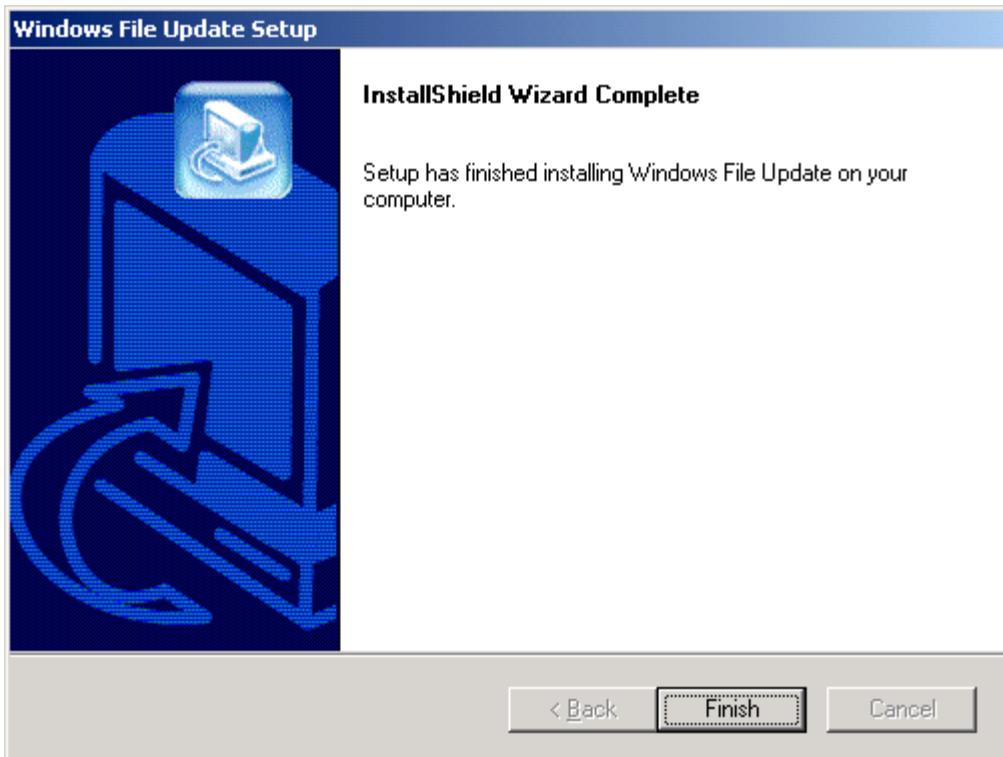


Figure 13

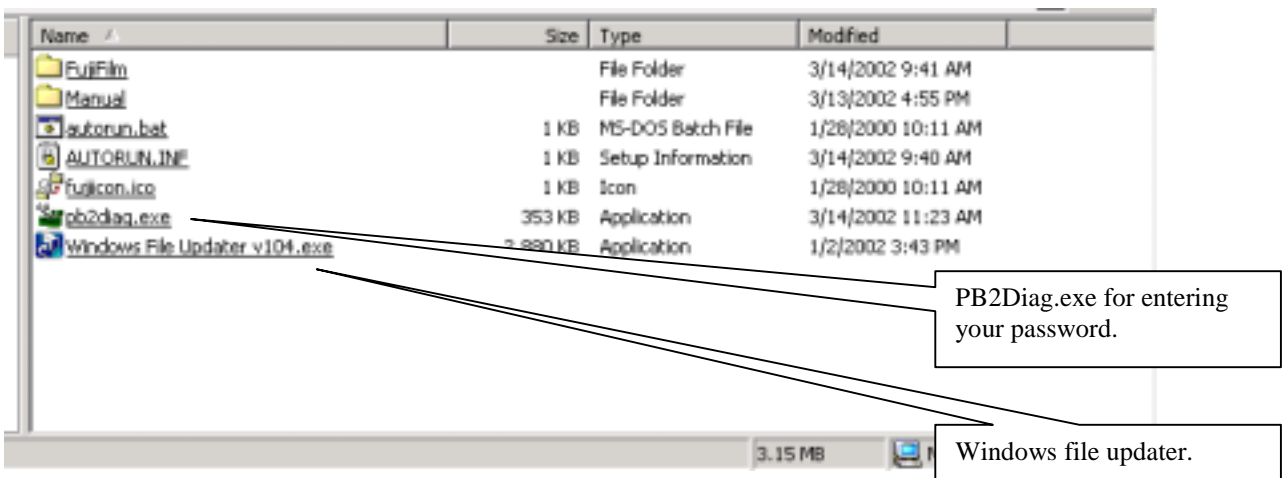


**Figure 14**

At this point you should be done.

CD Image

This snapshot shows an image of the CD, and points out the locations referenced above.



**Figure 15**