



X MARKS THE SPOT WHERE IT ALL COMES TOGETHER.

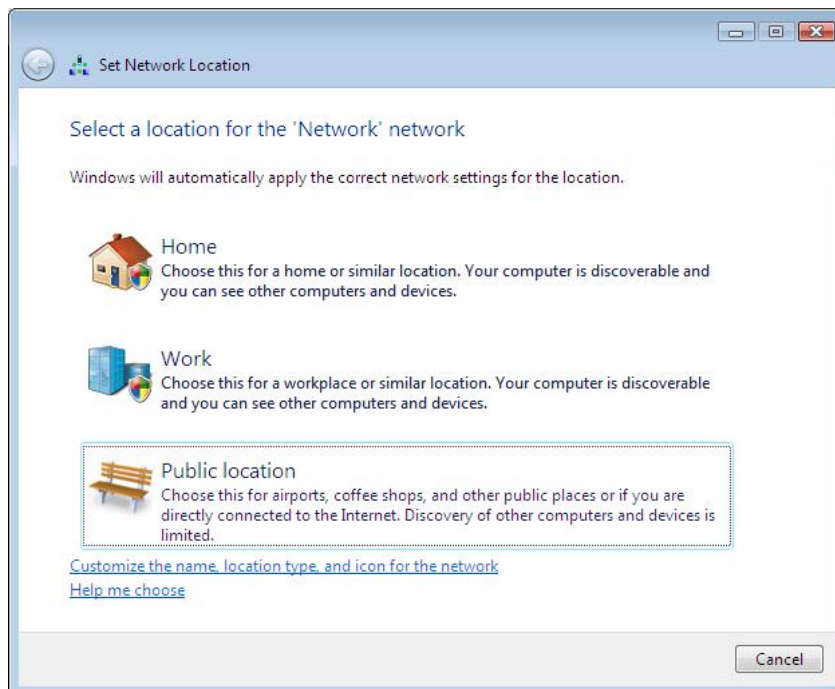
TB10-001: PREPARING WINDOWS VISTA\7 FOR USE WITH NAVIGATOR GPS

To prepare Windows Vista/7 for use with Navigator GPS, certain changes need to be made to the OS configuration **before** installing the Navigator GPS software.

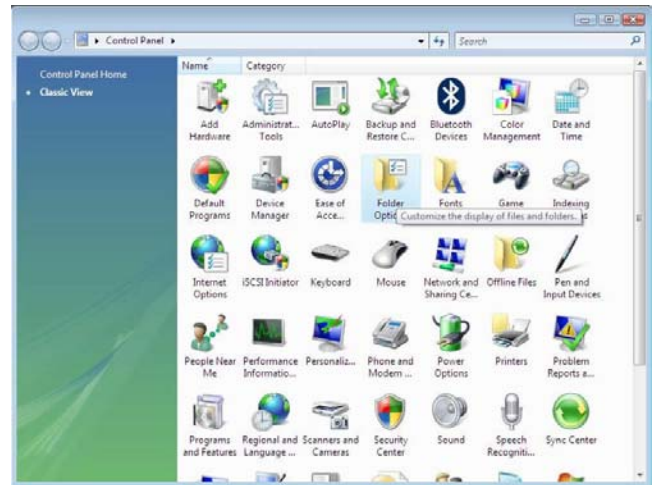
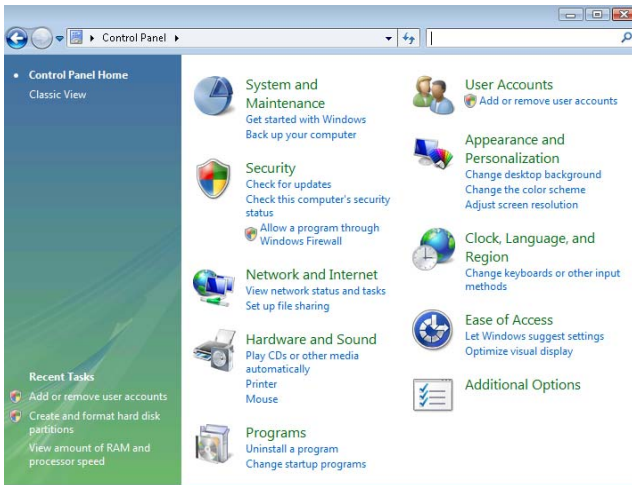
The following section explains how to prepare **Windows Vista**:

Step 1: Log in as a Windows user who is a member of the local *Administrators* group. Navigator GPS requires administrative access to operate correctly.

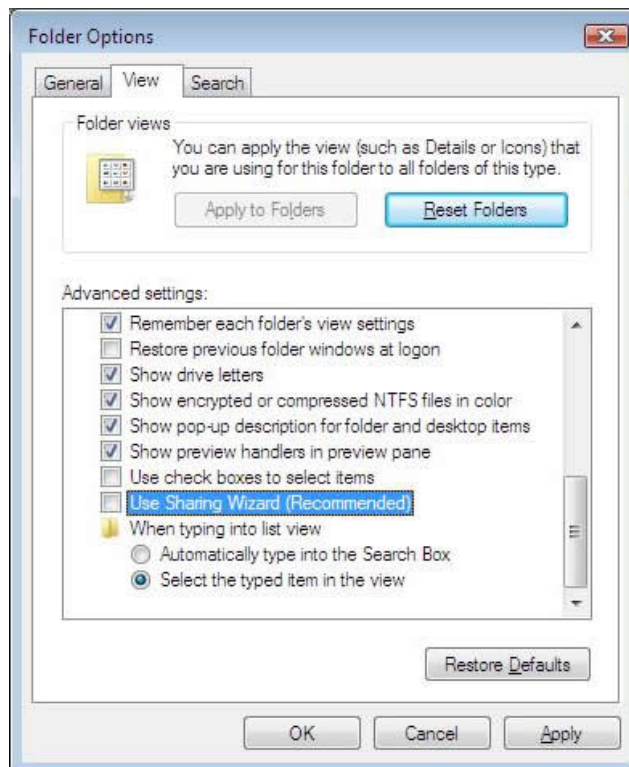
Step 2: Select the correct network type. The first time your computer is connected to a network, it will ask what type of network it is. Navigator GPS requires the *Work Network* setting to function properly.



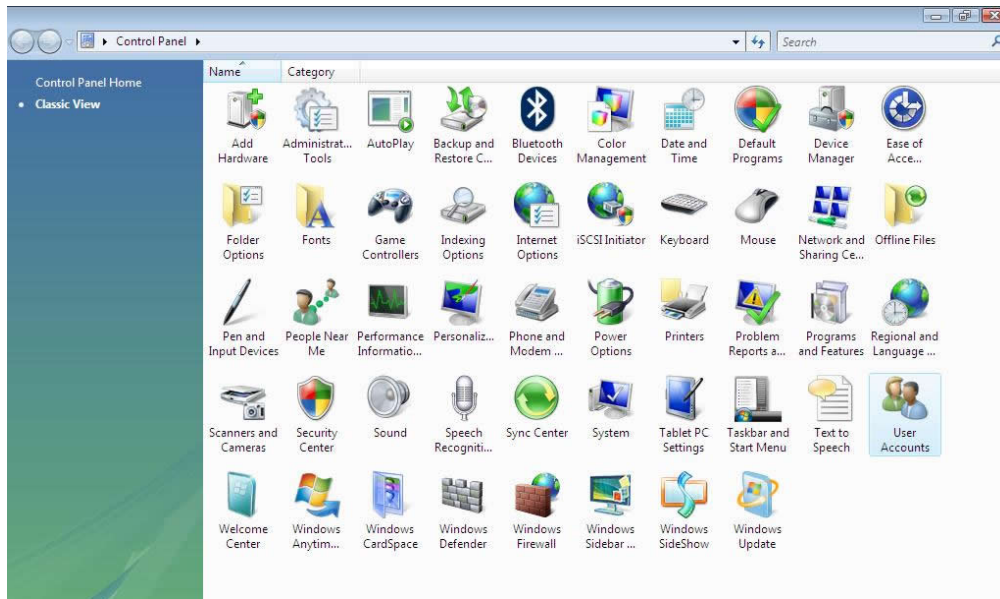
Step 3: Disable the **Sharing Wizard**. Go to Control Panels and select *Folder Options*. Depending on your setup, you will see either the default view or the Classic view when you select Control Panels:



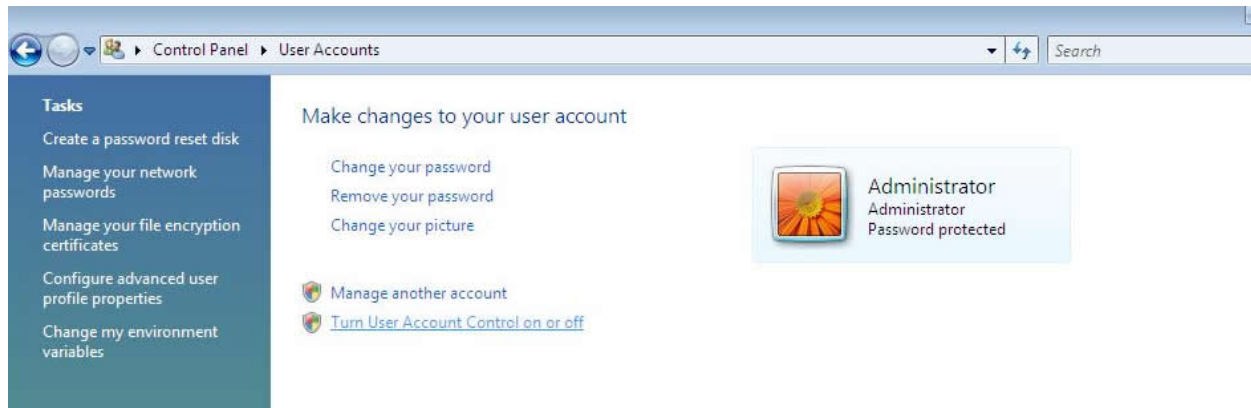
After selecting *Folder Options*, click the *View* tab and scroll down to the *Use Sharing Wizard* option. Deselect by clicking the box and then click *Apply*.



Step 4: Disable the **User Account Control** (UAC). From within Control Panels, select *User Accounts*.



From there, select the option labeled *Turn User Account Control on or off*.

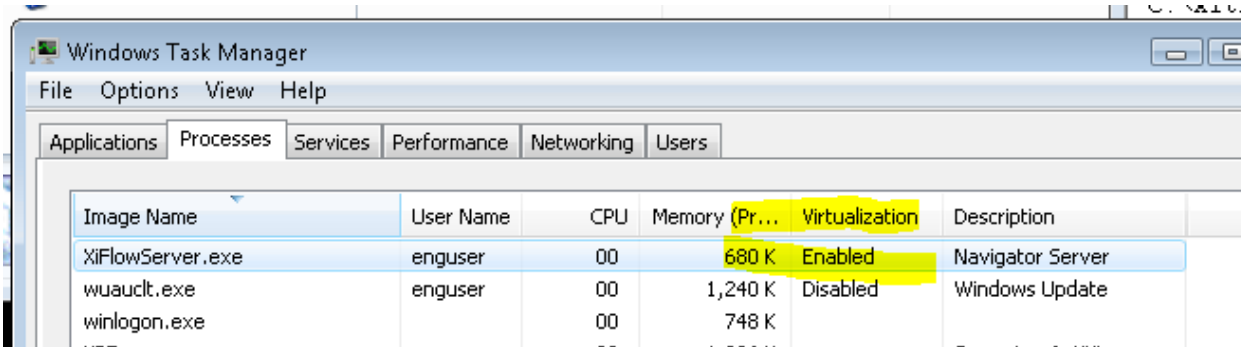


Finally, uncheck the box next to *Use User Account Control (UAC) to help protect your computer*, and click *OK*. You may be prompted to restart to complete this process.



You are now ready to install the Navigator GPS software.

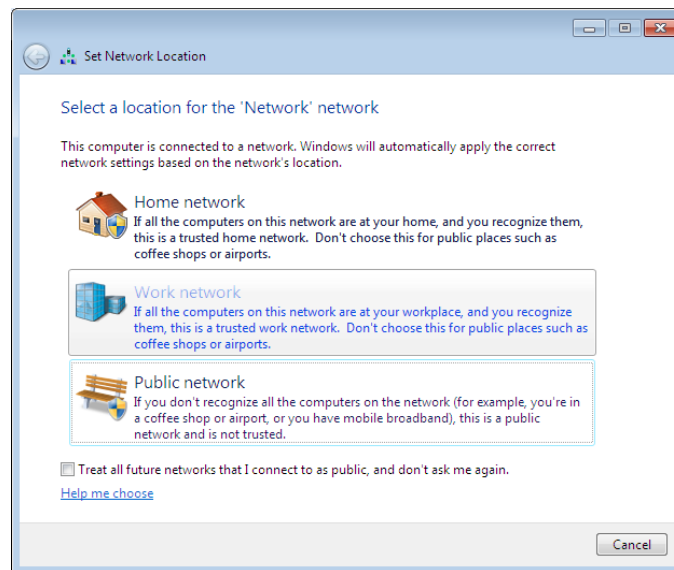
Please Note: One way to tell if UAC is still on when you think it's not, is that the RIP Manager applications get "virtualized" access to protected system areas: The Windows folder, HKLM in the registry, etc. Essentially, writes to these areas are quietly re-directed to a "per-user" area and not the real location. In Task Manager you can tell this is happening by enabling the virtualization column like this (Vista Pro):



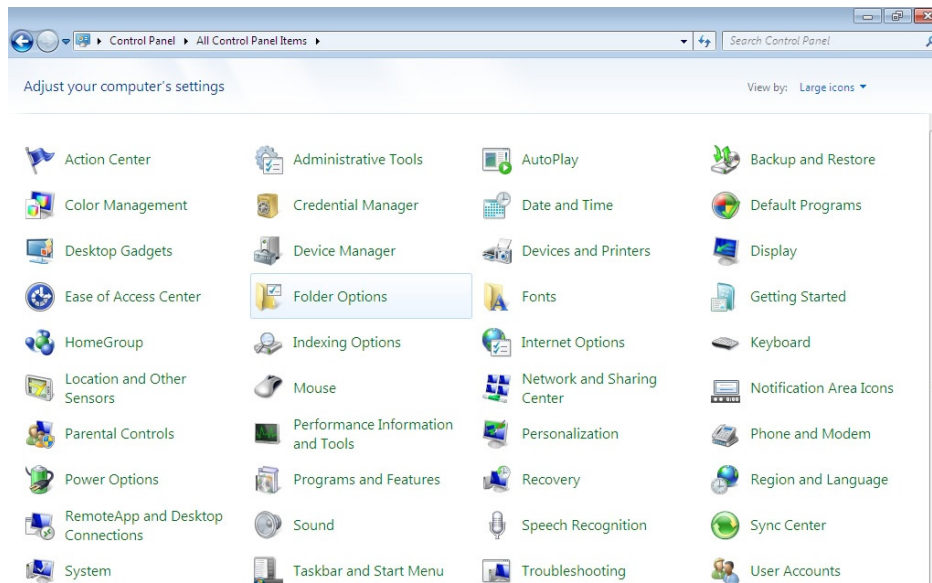
The following section explains how to prepare **Windows 7**:

Step 1: Log in under a Windows user who is a member of the local *Administrators* group. Navigator GPS requires administrative access to operate correctly.

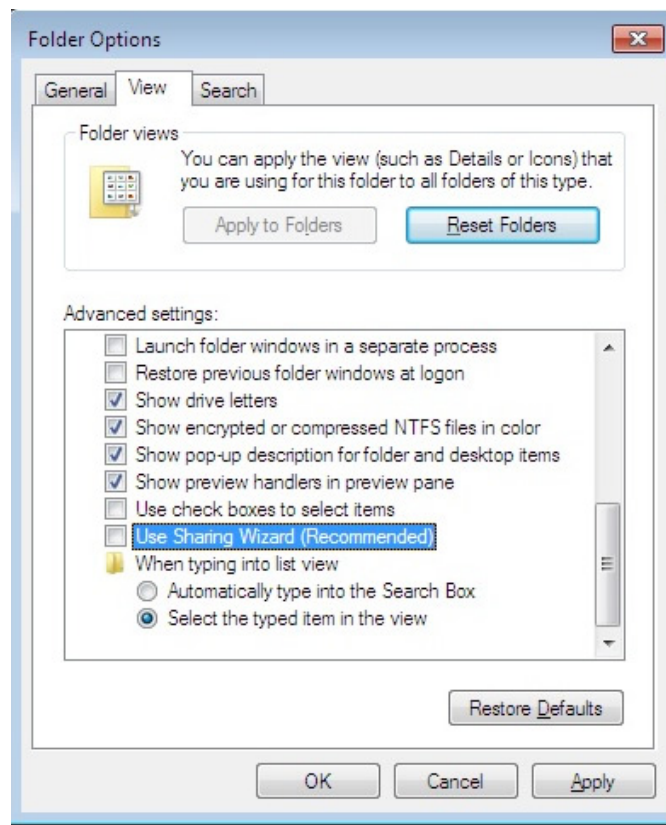
Step 2: Select the correct network type. The first time your computer is connected to a network, it will ask what type of network it is. Navigator GPS requires the *Work Network* setting to function properly.



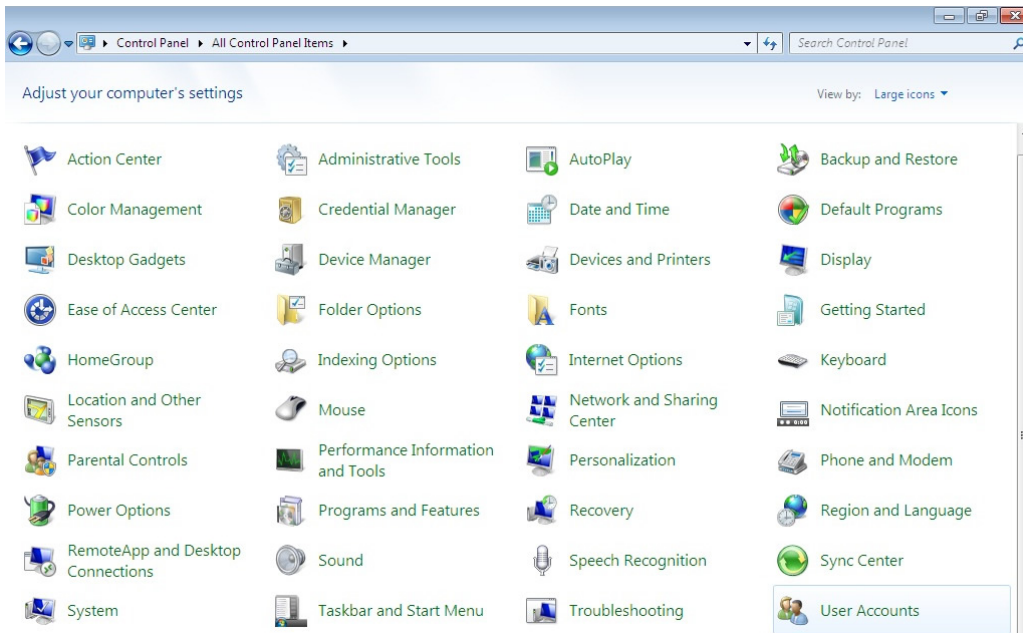
Step 3: Disable the **Sharing Wizard**. Go to Control Panels and select **Folder Options**.



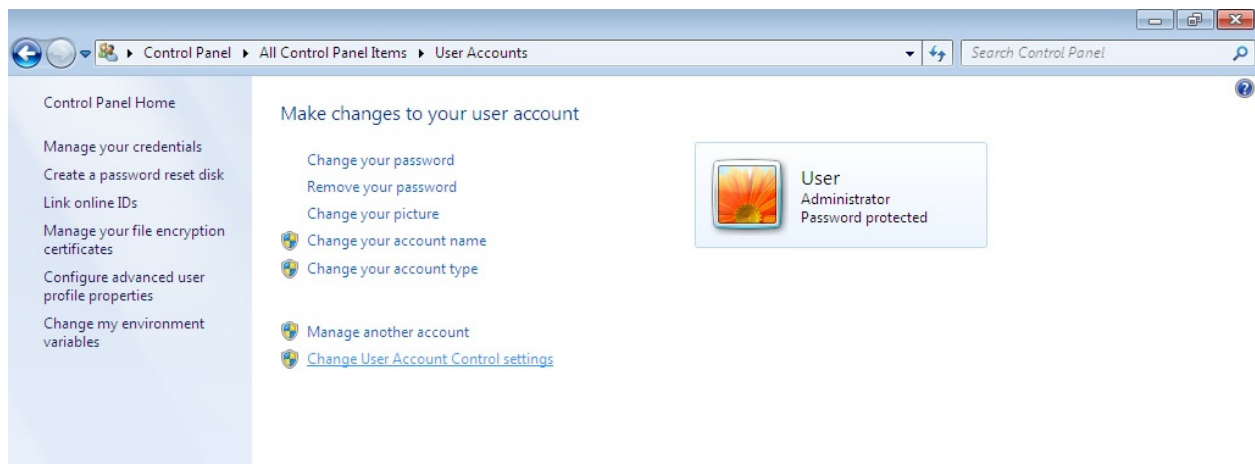
After selecting **Folder Options**, click the **View** tab and scroll down to the **Use Sharing Wizard** option. Deselect by clicking the box and then click **Apply**.



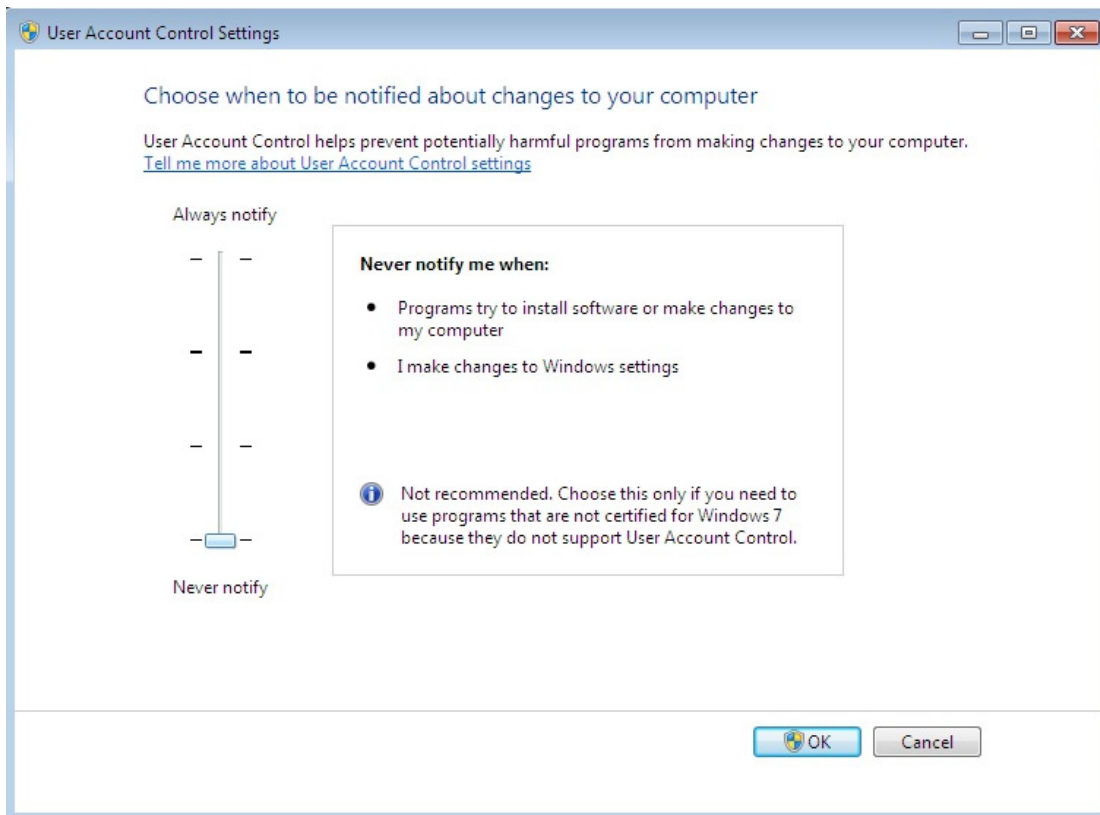
Step 4: Disable the **User Account Control (UAC)**. From within Control Panels, select **User Accounts**.



From within the **User Accounts** window, select the option labeled **Change User Account Control settings**.



Slide the slider bar to the bottom setting labeled, **Never notify**. Click **OK**. You may be prompted to restart to complete this process.



You are now ready to install the Navigator GPS software.