



X MARKS THE SPOT WHERE IT ALL COMES TOGETHER.

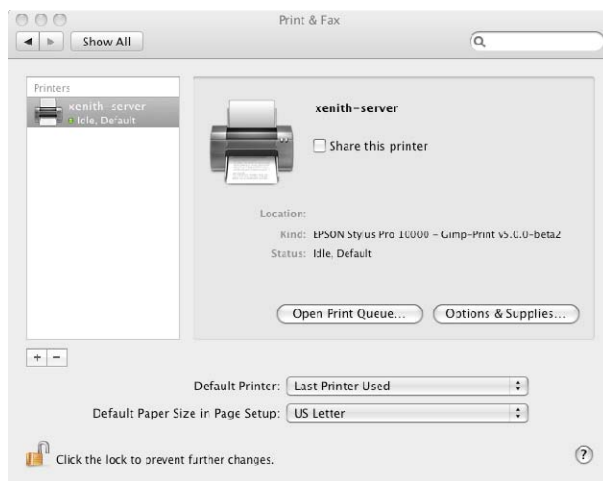
TB08-001:

PRINTING TO A WINDOWS SHARED PRINTER FROM MAC OSX 10.5.x

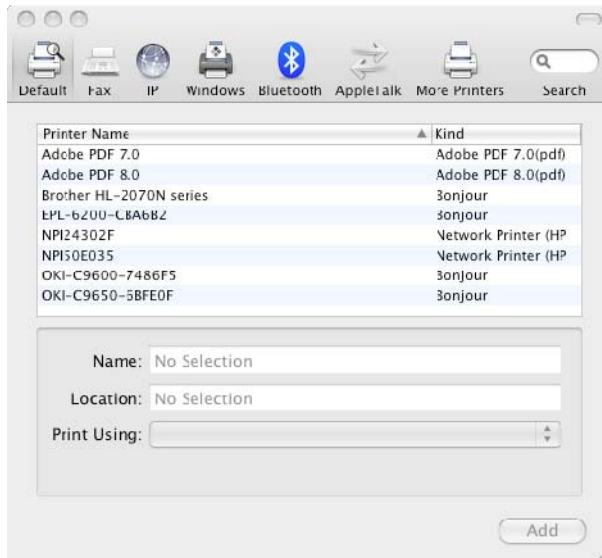
This technical bulletin is valid for versions of Mac OSX 10.5 where a mounted Windows printer will automatically put jobs in a held mode stating that there is “Authentication required” but will not release the files when authentication is given. While we do not know when the problem will be fixed, to our knowledge it is present in OSX 10.5.2 and some versions of 10.5.1.

To override the authentication requirement, follow the steps outlined below. This process will add “Advanced” options to the add printer window on the Macintosh.

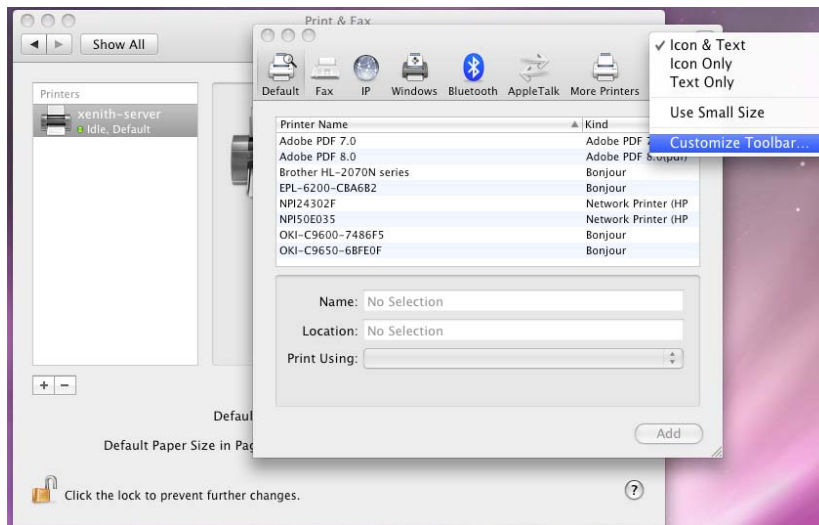
1. Open System Preferences
2. Open Print & Fax (to open the window shown below).



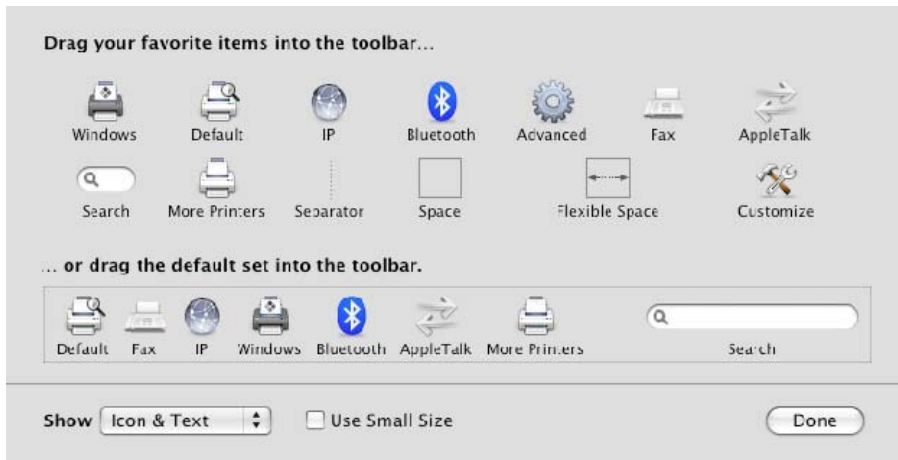
3. Click on the “+” to add a printer (to open the window shown below).



4. Right-click or ctrl-click on the menu bar (the gray area at the top of the add printer window). A drop down menu will appear as shown below.



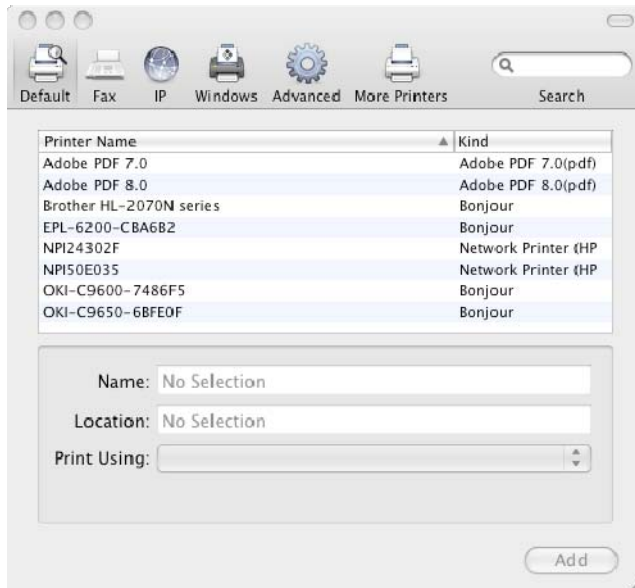
5. Select Customize Toolbar from the drop down menu. A new customization window will appear as shown below.



6. Add the Advanced button by dragging the Advanced icon onto the toolbar of the Add Printer window as shown below.



Note: you can also remove un-used icons from the add printer window by dragging them off the toolbar and into the customization window. When finished, your add printer window should look similar to the one shown below.



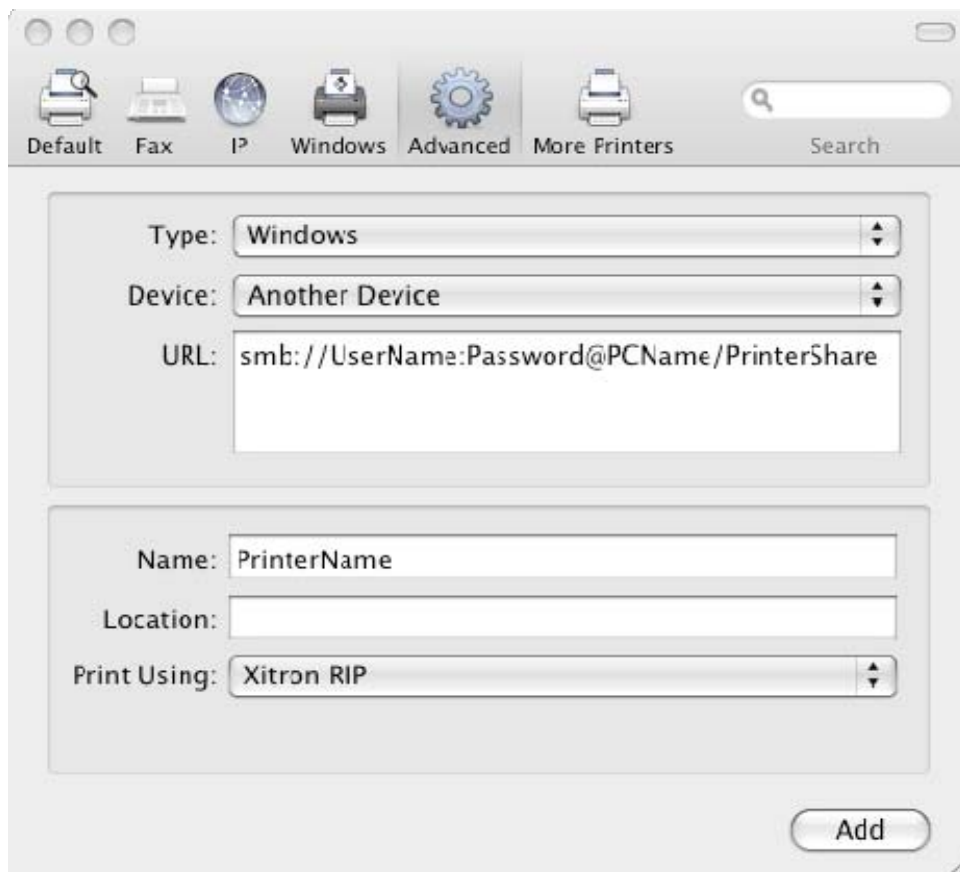
7. Select the newly-added Advanced button to open the Advanced Add Printer window, which will appear as shown below. All of the options in the window will appear grayed out for a short period of time as the Mac investigates your network.

Once the options become available, select Windows as the Type, and leave Device as shown in the example.

Next, type in the path to the shared printer as shown below. (Make sure that the PC to which you are trying to attach has been configured with a legitimate username (NOT Administrator – but with administrative privileges) with a real password (NOT blank) and that you enter this username and password using the following syntax.

```
smb://UserName:Password@PCName/PrinterShareName
```

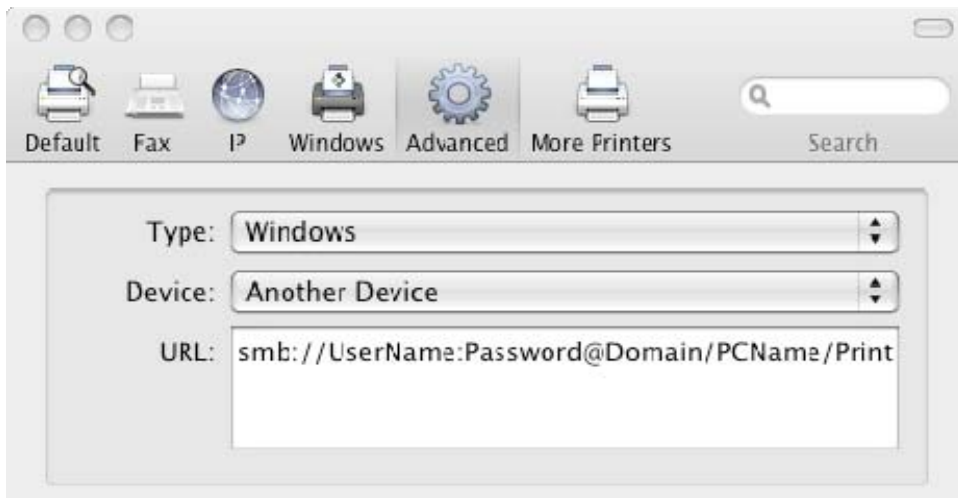
Finally, enter the printer name you want displayed on your Macintosh and choose the proper PPD in the Print Using menu.



8. If the above settings do not work it may be because the PC sharing the printer is in a domain. If this is the case, use the syntax from the example below.

smb://UserName:Password@DomainName/PCName/PrinterShareName

Note: the only difference is the addition of the name of your PC's domain name after the @ sign.



Following these instructions should allow for unencumbered printing from your Macintosh OSX 10.5.x system to a Windows shared printer.