



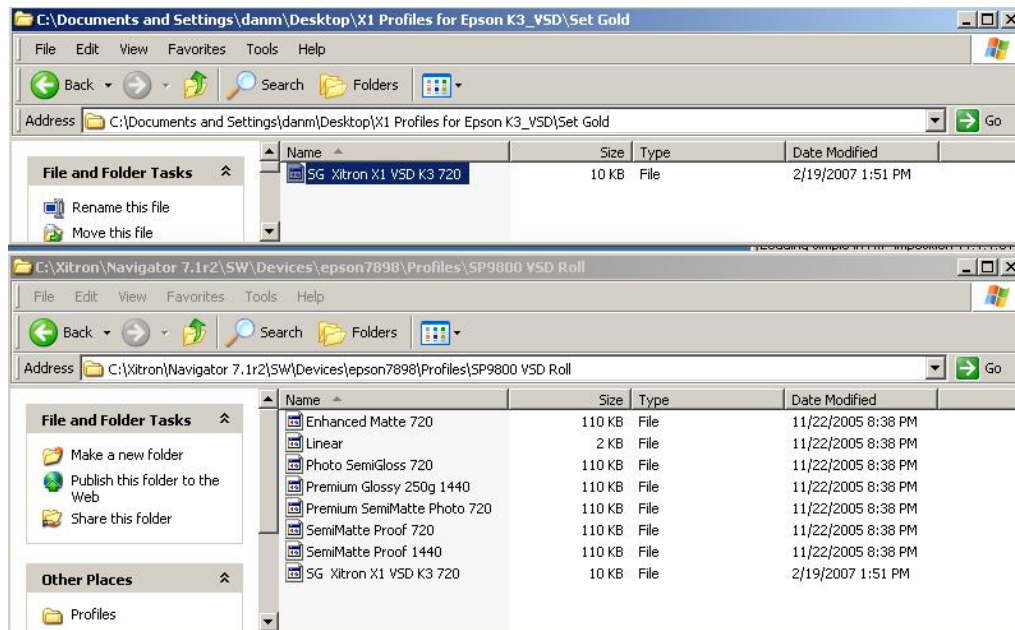
X MARKS THE SPOT WHERE IT ALL COMES TOGETHER.

TB07-001: INSTALLING XITRON'S X1 INKJET PAPER PROFILE WITH THE GLOBAL GRAPHICS VSD PLUG-IN

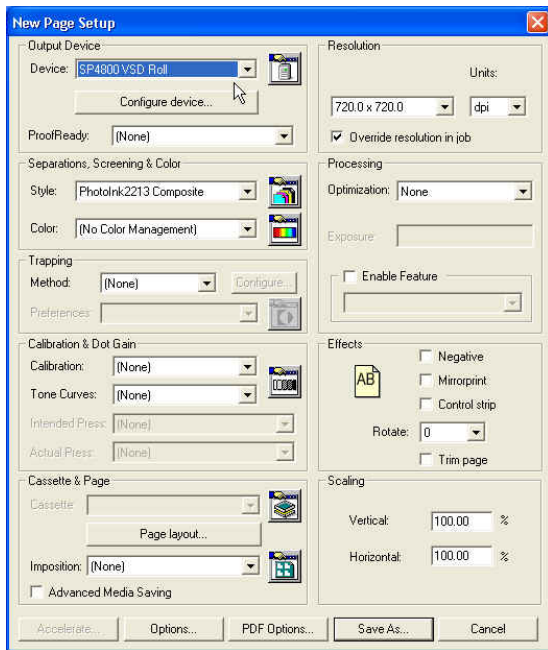
The purpose of this bulletin is to explain, step-by-step, the proper method for installing and configuring Xitron's X1 inkjet paper profile when using the Global Graphics VSD proofing plug-in with an Epson K3 printer.

Xitron provides two files necessary for configuring the plug-in; an ICC profile and a SetGold linearization file for the Epson K3 Printers (4800, 7800, 9800). These files are available by contacting Xitron support by sending an email to xitronhelp@xitron.com.

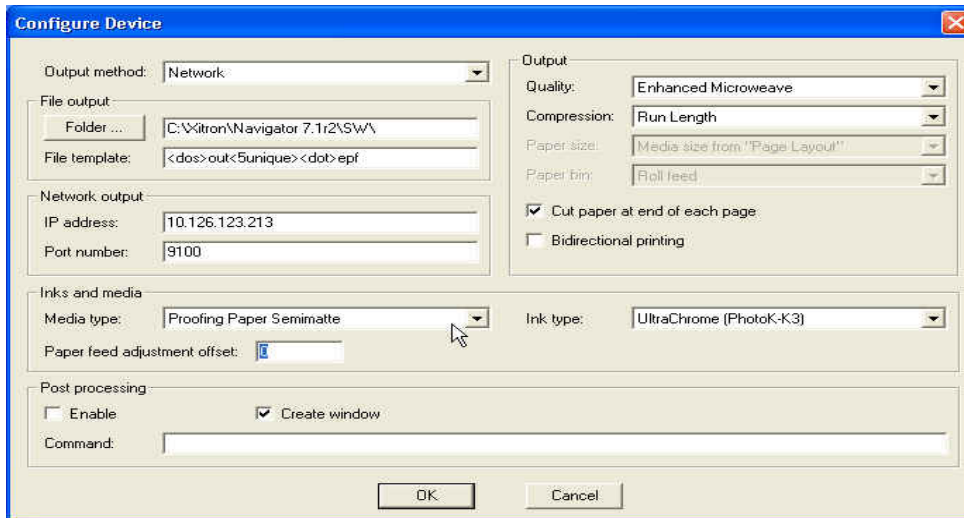
1. Begin by copying the Set Gold profile into the Profiles folder for the Epson device. The example below illustrates a Profile folder in the default installation location of C:\Xitron\Navigator 7.1r2\SW\Devices\epson7898.



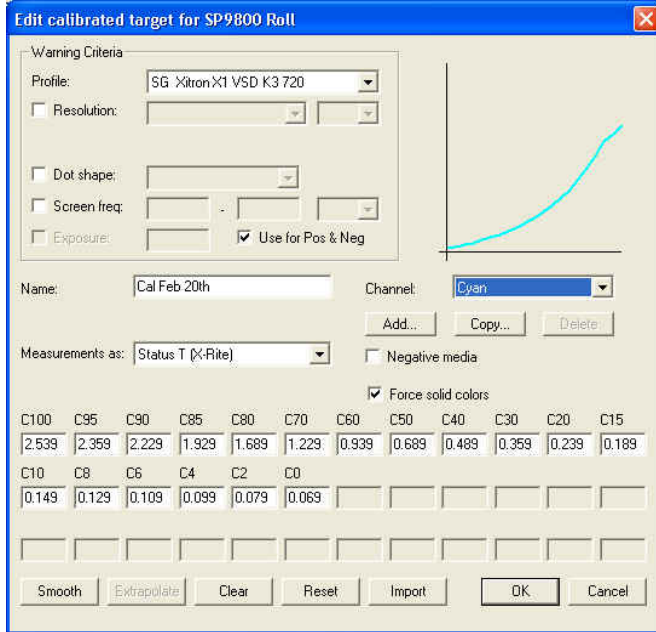
- From within the RIP, create a new Page Setup. In this example an Epson 4800 has been selected in the Device pull-down menu. Ensure the device selected includes VSD after the device name (SP4800 VSD Roll). Set the Resolution to 720x720 and check the “Override resolution in job” tick box. Select **Photoink2213 Composite** for the Screening & Color Style. Select **Photoink2213 Composite** for the Screening & Color Style.



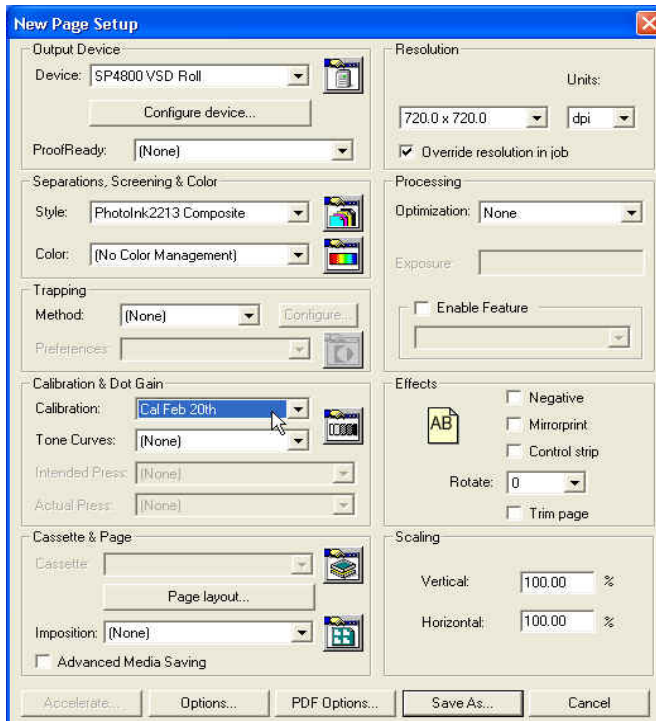
- Click the Configure Device button and select the appropriate output method. Copy the settings in the example below and ensure that **Proofing Paper Semimatte** is chosen under Media Type. Click OK.



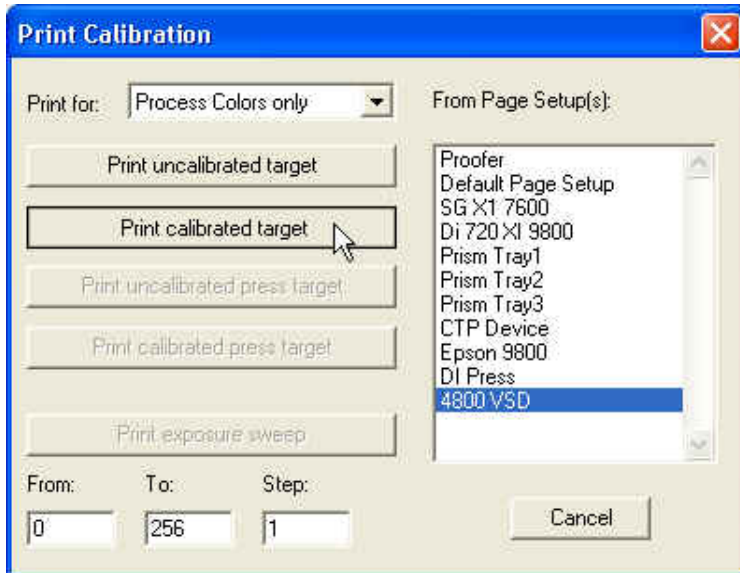
- Next, create a calibration using the SetGold profile installed during step one. Begin by opening the Calibration Manager located beneath the Output Menu. Select the device from the pull-down menu and click “New.” In the Profile pull-down menu, select the SetGold Profile **SG Xitron X1 VSD K3 720**. In the name field, type the name of the calibration and click “OK.”



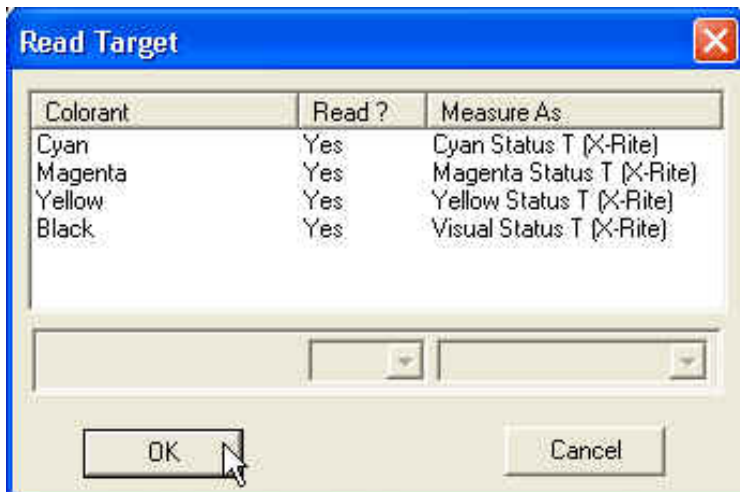
- After creating the calibration, select it within the Page Setup. The following example illustrates the selection of a Calibration file labeled, “Cal Feb 20th.” After selecting the proper calibration, close the Page Setup.



- At this point, it will be necessary to calibrate the proofer so that the system properly uses the measurements contained within the profiles. To accomplish this, select the Print Calibration option located beneath the Output Menu. Select the Page Setup just created, which contains the Set Gold Calibration. Select Print Calibrated Target. The RIP will print a 4-color calibration strip to the selected output device.

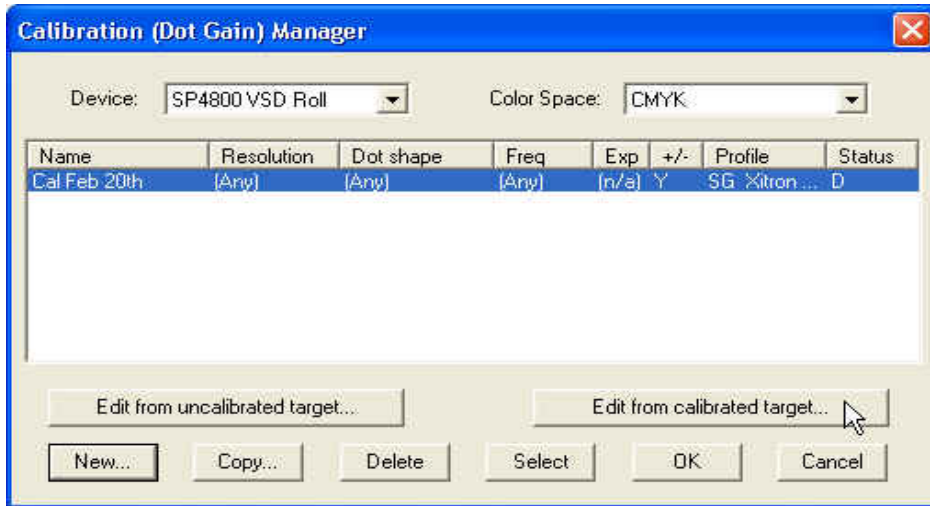


- Open the Genlin Utility located within the Global Graphics program menu (Start/All Programs/Navigator, etc.). From beneath the File Menu, select “Read Target.” Using one of the supported X-rite measurement devices, read the CMYK strips into the system. When the instrument is ready to read the strips, Genlin will display a dialog box similar to the one below. Using Genlin allows the system to import the readings directly into the Calibration Manager as outlined in the next step.

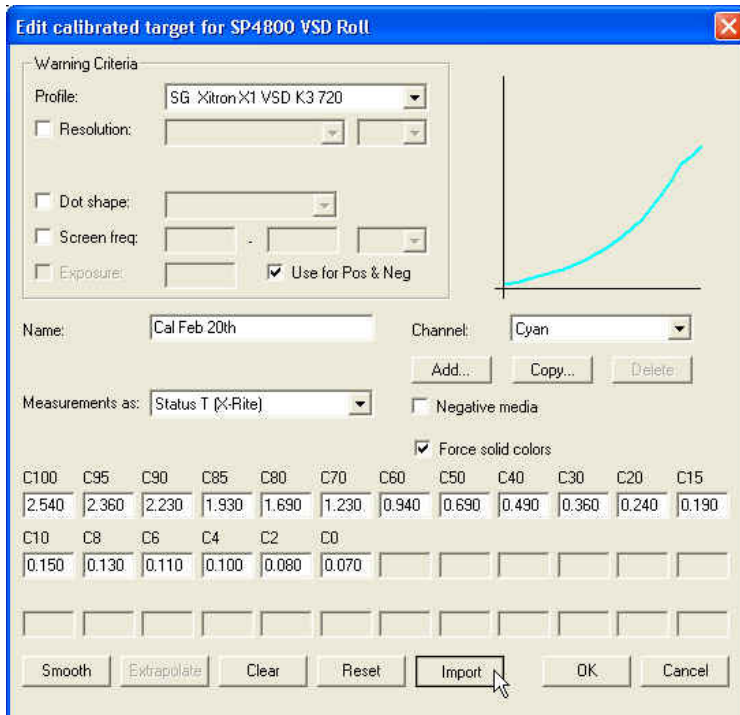


Note: If a supported measurement device is not available, it will be necessary to measure the patches with a reflective densitometer set to read “Status T.”

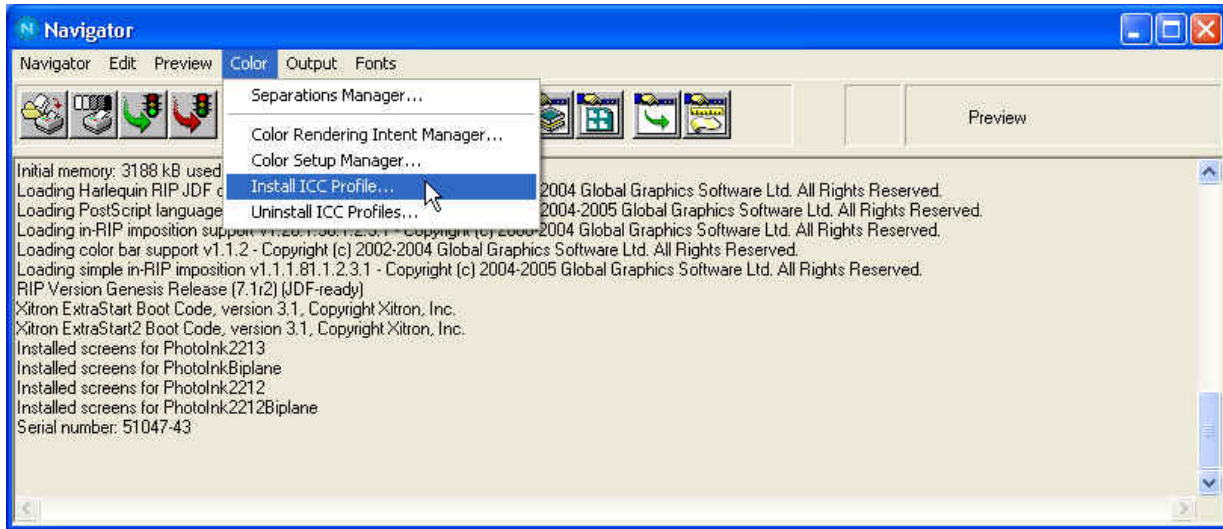
- Open the Calibration Manager and select the calibration file used for the linearization in the previous steps. Click **Edit from calibrated target**.



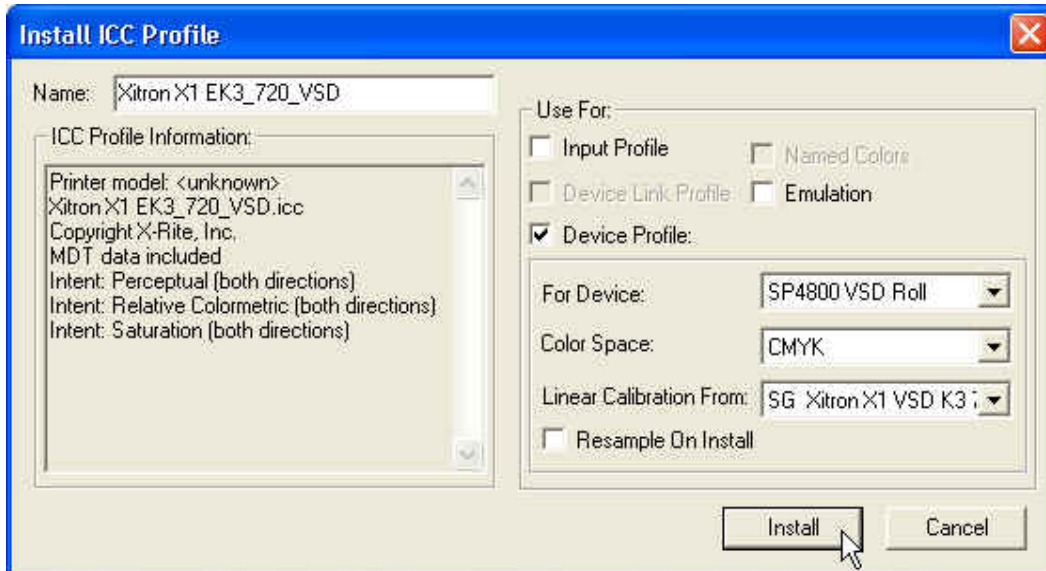
- Once open, click “Import” to read the measurements from Genlin. (Type your numbers in the appropriate boxes if the measurements were taken manually.) Close the Calibration Manager. The printer is now calibrated.



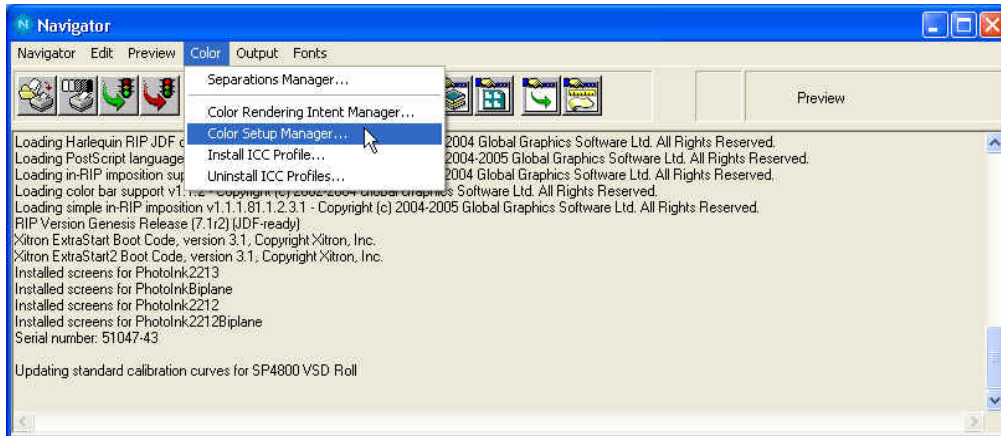
10. Install the Xitron X1 ICC profile into the RIP by selecting “Install ICC Profile” beneath the Color Menu. Browse to the location of the file and select it.



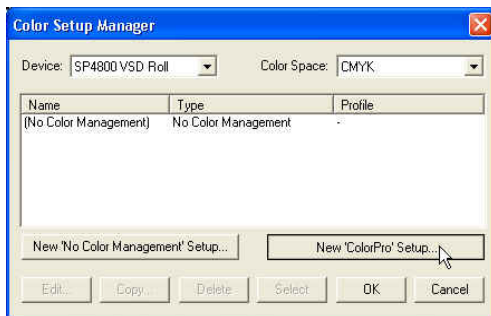
11. After selecting the file, the ICC Profile installation dialog will display as illustrated in the example below. Select Device Profile, uncheck Resample on Install, and select **SG Xitron X1 VSD K3** from the Linear Calibration pull down menu.



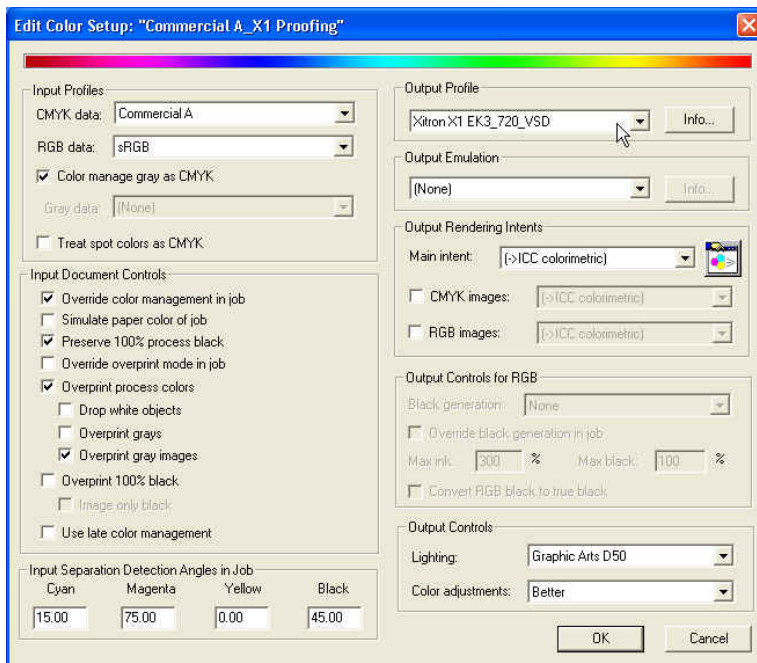
12. Apply the profile by selecting Color Setup Manager from the Color pull down menu.



13. Select the output device and click New Color Pro Setup.



14. The illustration below is an example of a ColorPro setup using the Commercial A input profile with the Xitron X1 inkjet paper output profile. While these settings will offer the best results, the press-input profile is user-selectable and can be changed according to the desired color space. Click OK.



15. Return to the Page Setup for the output device and select the new ColorPro profile. The final Page Setup should resemble the illustration below. The system is now ready for color proofing.

