

Powered by



NAVIGATOR
GPS

X MARKS THE SPOT OF EFFICIENCY.



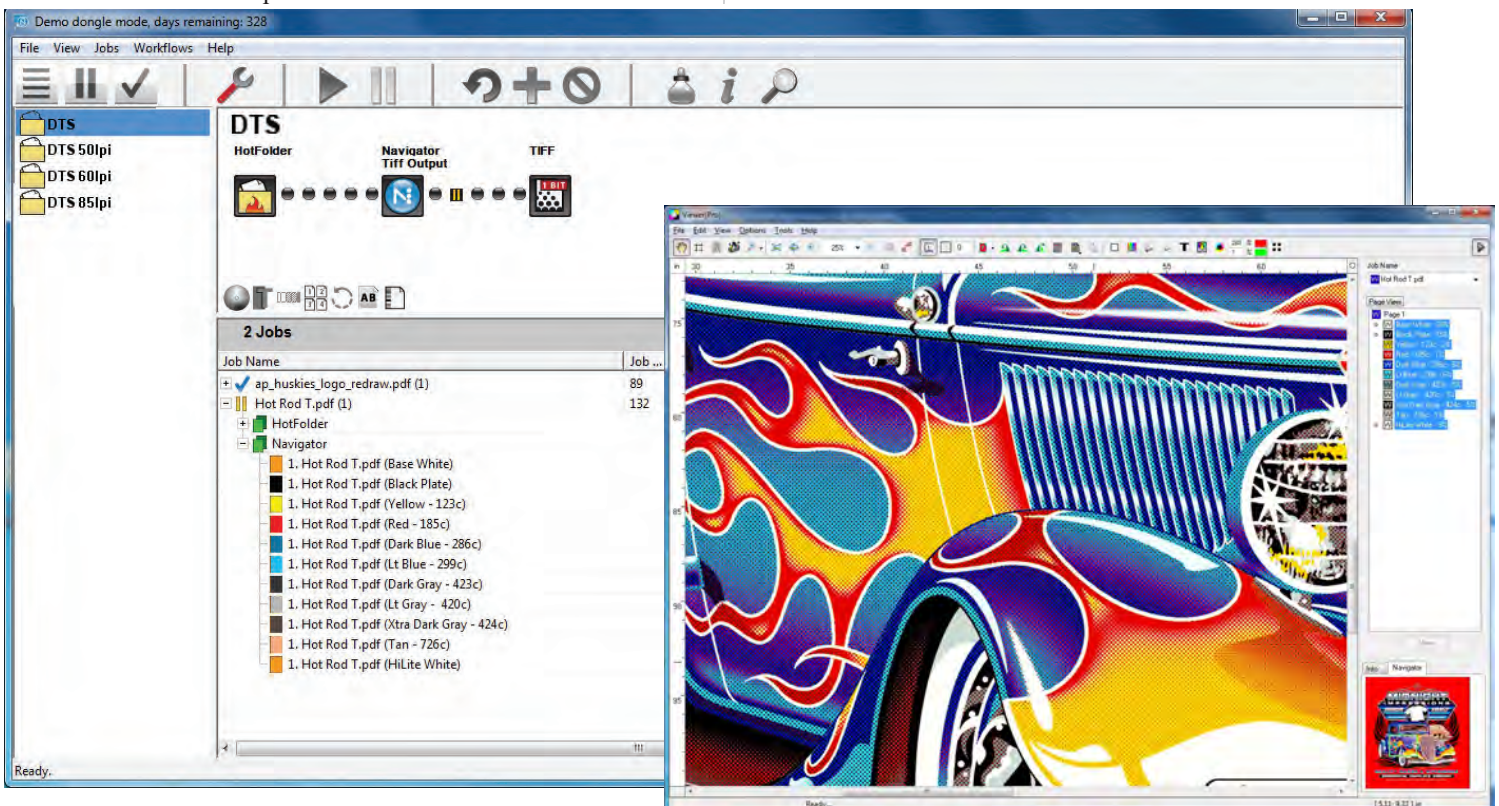
SCREENMAKER PRO RIP & WORKFLOW

- **Xitron Navigator Harlequin RIP technology**
High performance, high quality RIP technology
- **Direct driver for Legend DTS system**
Direct-to-screen output
- **PDF and PostScript Input**
Native processing of commonly used file formats
- **Integrated soft proofing**
Preview jobs from any desktop
- **Job Tracking**
Track job progress throughout the system
- **Variable output**
Selectable output of 360, 720 or 1440 dpi
- **Expandable**
Add features and capabilities as needs dictate

The Screenmaker Pro RIP and workflow includes client software for Mac and PC and a custom device driver for the Legend DTS system.

Screenmaker Pro incorporate sophisticated on-screen soft-proofing tools that allow the user to see the final processed job. Included is the ability to select the substrate color and to define any color as an opaque, such as a white underbase, so that jobs can be viewed accurately on colored substrates.

The integrated soft-proofing viewer is adjustable from 5%-800% magnification, allowing the user to inspect the file in a processed format. Jobs can be viewed as a composite or any combination of single or multiple separations.



The Screenmaker Pro RIP and Workflow shows the progression of a job through the workflow at the operator's Windows- or Macintosh-based workstation.

The image on the right shows the integrated Job Viewer's ability to display a representation of the final job before output.

Screenmaker Pro RIP

- Native processing of PDF 1.7
- Native processing of PostScript
- Native processing of XPS 1.0
- HD Photo support

Supported Input File Formats

- PostScript® Language Level 1, 2 and 3 specifications
- PDF 1.1, 1.2, 1.3, 1.4, 1.5, 1.6, 1.7
- PDF/X-1a:2001, PDF/X-3:2002, PDF/X-3:2003,
- PDF/X-4
- XPS 1.0
- TIFF™ 6
- JPEG, GIF
- DCS and DCS 2
- EPS
- JBIG2
- HD Photo

Screenmaker Pro Workflow

- Mac and PC clients
- Integrated on-screen soft-proofing
- 5%-800% Viewer magnification
- Substrate color simulation
- User definable underbase color within Viewer
- User controllable job management
- Extensive job tracking
- Legend DTS device control from client software
- Expandable with additional clients (*optional*)
- Ability to control multiple Legend DTS systems (*optional*)



Acti Cameras Inc. Direct To Screen



The Screenmaker Pro Workflow drives the Legend DTS system.

Prices and specifications are subject to change without notice. Trademarks are the property of their respective owners.

➤ **GROUP HEADQUARTERS:**
ANN ARBOR, MICHIGAN 48108
MAIN: 734.913.8080
FAX: 734.913.8088
XITRONSALES@XITRON.COM
WWW.XITRON.COM

CONTACT YOUR XITRON DEALER FOR MORE INFORMATION:

ACTICAMERAS, INC.
1108 E EDNA PLACE
COVINA, CA 91724
MAIN: 626-339-3669
FAX: 626-339-3883
ORDERS@ACTIDTS.COM
WWW.ACTIDTS.COM



YOUR BUSINESS. OUR DRIVE.