

NAVIGATOR *Elite* Workflow Bundle

starting at **\$24,995*** Prices in USD

Bundle Part Number: 641-xxx-1xB

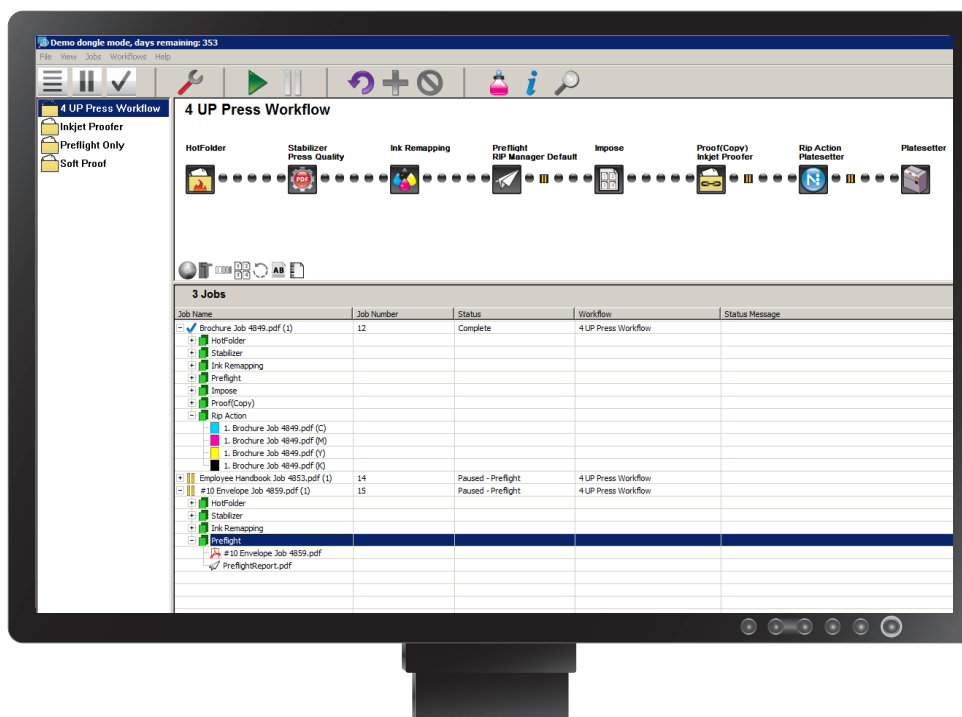
Navigator *Elite* Workflow Installation Bundles

These Installation Bundles are turnkey packages that include everything from software and computer platform to on-site installation and telephone support.

Navigator *Elite* Workflow is the premier offering in the Navigator GPS product line. Designed for prepress departments in need of no-nonsense, productive, economical solutions, Navigator *Elite* Workflow combines operator convenience with all the tools necessary to efficiently drive your work to the pressroom. Easy-to-use, powerful, flexible, and compatible with more than 250 output devices, Navigator *Elite* Workflow also gives you the full backing and support of Xitron. We build solutions based on customer's needs, creating a lasting partnership for years to come.

Navigator *Elite* Workflow Bundle includes:

- ▶ Navigator RIP with PDF 1.7 & XPS 1.0 support
- ▶ Navigator Workflow Server with 2 clients including PDF Creation, Preflighting, Ink Remapping, Scriptable Hot Folders, Imposition Integrator, remote job management and soft proofing
- ▶ Dynagram inpO2 Basic Imposition software (2 single seats)
- ▶ PDF Raster proofing plug-in
- ▶ TrapPro in-RIP Trapping option
- ▶ PC platform with warranty through computer manufacturer
- ▶ On-site installation, configuration and training
- ▶ Option to add select upgrades at 10% discount
- ▶ One year support agreement
- ▶ All travel and expenses included*
- ▶ One output interface to any of the hundreds of devices Xitron supports*



NAVIGATOR *ELITE* WORKFLOW BUNDLE

Navigator RIP

Navigator offers support for PDF 1.7 and XPS 1.0 files generated by popular desktop publishing solutions. The Navigator *Elite* Workflow bundle also includes TrapPro, the powerful in-RIP Trapping option and Raster PDF, a rasterized PDF soft proofing option as a standard part of the offering.

Optional features such as vDot proofing for the Epson StylusPro 4900, 7890, 9890, 7900 and 9900; CIP3 generation; and Key-Setter Connect ink key presetting are available to make Navigator *Elite* Workflow an even greater value.

Navigator Workflow Server

Navigator *Elite* Workflow helps increase productivity, manage your work, and reduce costs. With an intuitive user interface, an operator is able to manage and control jobs from virtually any prepress workstation. Specific workflow sequences can be designated and stored, greatly reducing the opportunity for error.

Navigator *Elite* Workflow includes PDF Creation and Preflighting, plus a robust Ink Remapping tool, providing a quick and easy way to eliminate or consolidate plates within a job. Scriptable Hot Folders allow jobs to be sorted automatically by the workflow based on job size or other criteria.

Also included is Dynagram's powerful inpO2 Basic imposition solution. inpO2 Basic allows you to increase your productivity with a powerful and scalable PDF imposition software, built right into the familiar environment of Acrobat 8. inpO2 Basic provides functions and features designed for commercial printers with PDF workflows (*requires Adobe Acrobat 8 or higher.*) RIP Manager's Imposition Integrator option provides greater control over imposed jobs within the workflow. Optional upgrades to Professional and Complete are also available for an additional charge.

On-site Installation and Training

- ▶ Installation and training for up to two operators conducted by Xitron support specialists
- ▶ Bundle price reflects connectivity for one high-resolution output device. *
- ▶ **All travel and lodging expenses included in the bundle price***

Installation and training is conducted by Xitron's own staff of support specialists who are experienced in computer technology, the graphic arts industry and Xitron's Navigator *Elite* Workflow software. Before the installation, Xitron conducts a pre-site interview to learn about your equipment and workflow. Xitron specialists will install and configure the Navigator *Elite* Workflow bundle in addition to training your operators on-site. Xitron takes pride in providing a training program that promotes a smooth transition to your new Navigator *Elite* Workflow system. Furthermore, there are no hidden costs since travel and expenses are included in the Navigator *Elite* Workflow Bundle price!*

1-Year Gold Support Agreement

- ▶ Unlimited telephone support and remote diagnostics
- ▶ Discounts on updates and major upgrades
- ▶ Warranty coverage on Xitron interface hardware (if applicable) and software security device
- ▶ Upgrade to a 3-year TotalCare Gold Support Agreement available

The All-Inclusive Navigator *Elite* Workflow Bundle also offers a valuable one-year support contract with unlimited telephone and email support, discounts on updates and major upgrades and warranty coverage on Xitron interface hardware (if applicable) and software security device. A full 3-year TotalCare Support program upgrade is available at a discounted rate when purchased with a new Navigator *Elite* bundle.

*Price for installation in the 48 contiguous United States when airfare is booked 14 days in advance. Additional charges apply for installation outside contiguous United States. Shipping and handling charges not included in bundle price. Additional fees will be incurred for connection to more than one high resolution output device. Prices and specifications are subject to change

CONTACT YOUR XITRON DEALER FOR MORE INFORMATION:



YOUR BUSINESS. OUR DRIVE.

CORPORATE HEADQUARTERS
4880 VENTURE DRIVE, SUITE 500
ANN ARBOR, MICHIGAN 48108
MAIN: 734.913.8080
FAX: 734.913.8088
XITRONSALES@XITRON.COM

WWW.XITRON.COM