



NAVIGATOR

INSTALL GUIDE

**NAVIGATOR GPS & RIP
MANAGER**

MAY, 2009



YOUR BUSINESS. OUR DRIVE.

TABLE OF CONTENTS

TABLE OF CONTENTS	1
CHAPTER 1 – ABOUT NAVIGATOR GPS	2
1.1 Overview	2
1.2 RIP Manager Server	2
1.3 RIP Manager Clients	2
1.4 Timed Trial Mode	3
CHAPTER 2 – PREPARE FOR INSTALLATION	3
2.1 Introduction	3
2.2 Users and Shared Folders	4
2.3 Installing an Upgrade to an Existing RIP Manager or Xiflow System	4
2.4 Installing Navigator RIP Only	4
2.5 Installing RIP Manager Only	4
2.6 Platform Requirements	5
CHAPTER 3 - INSTALLATION	5
3.1 Navigator GPS	5
3.2 Restart your PC	6
3.3 RIP Configuration	6
CHAPTER 4 – GETTING STARTED	6
4.1 Launching the Software	6
4.2.1 Page Setups	6
4.3 RIP Manager Server	7
4.4 RIP Manager Client	7

CHAPTER 1 – ABOUT NAVIGATOR GPS

1.1 Overview

Navigator GPS has a vastly improved interface to the familiar Harlequin RIP. This client-server system is known as RIP Manager. It allows for remote rip and output control and ripped job preview from Mac or PC. It adds functionality to the RIP such as “print once, output many” workflows.

Job tracking of thousands of jobs can be done from a Windows or Macintosh computer. With the addition of the other options, features such as ink remapping, PDF normalization, Preflighting, and imposition are available.

RIP Manager provides a single, simple user interface from which users - from their own desktops - can monitor jobs through various production stages. Users can view, modify, delete, re-process and generally manage their work without leaving their desks and without learning the complex user interface of a RIP.

RIP Manager also provides a number of optional tools that users may incorporate to convert jobs to or from PDF, preflight jobs, and automatically fix a wide range of issues using standard EnFocus™ technology.

RIP Manager uses a Client-Server architecture, which is discussed in the following sections.

1.2 RIP Manager Server

The RIP Manager Server runs on a PC. It requires Windows Vista, Windows 2003 Server, or Windows XP.

By default, RIP Manager runs on the same computer as the RIP. However, you may configure more complex multi-RIP systems – see separate manuals for details.

The Server handles system security (licensing) and requires a dongle to run. For trial purposes, RIP Manager shares the Navigator RIP dongle. You will need a password if you wish to use the PDF optional Workflow Actions during the free trial period. RIP Manager requires its own dongle in addition to that supplied with the RIP for permanent use of these options.

This dongle provides security and permissions for the whole RIP Manager system. For example, Clients will run without dongles and the Server will accept as many Clients as are currently permitted by the system. Upgrading to support additional Clients is a simple process of entering a security code into the Server to update the permissions. This Server upgrade menu is called “Product Features”. Contact your dealer to purchase additional permission codes.

The RIP Manager Reference Manual covers server operation in detail.

1.3 RIP Manager Clients

RIP Manager Clients are available for PCs under Windows XP, 2003, Vista, and Mac OSX 10.4 and later.

The Client provides the regular user interface to the system, once basic configuration of the Server is complete. Users may connect to the Server and, subject to their rights allocated by the system administrator, create or modify workflows and manage jobs.

The system saves each user’s work and job status so the user can connect via another Client on another computer and see their work, as they would expect.

Clients allow users to:

- Create, modify or delete workflows.
- See jobs in the system by a number of different views.
- Review jobs that are held at various workflow stages.
- Release, delete or re-submit jobs.
- Proof jobs on-screen before final output.
- Check traps, separations, spot colors etc.
- Search for specific jobs or a specific user's jobs

The *RIP Manager Reference Manual* covers operation of the Client in detail.

1.4 Timed Trial Mode

RIP Manager will operate for a free trial period of 45 days after installation if installed as a bundle with Navigator RIP as described in this manual. Contact your supplier for a trial of the PDF features of RIP Manager.

CHAPTER 2 – PREPARE FOR INSTALLATION

2.1 Introduction

The Navigator GPS disk will automatically bring up the splash screen show below. Three different installations can be performed.

1. Navigator GPS (RIP and RIP Manager)
2. RIP Manager only
3. Navigator RIP only with legacy Harlequin interface.



2.2 Users and Shared Folders

RIP Manager makes extensive use of shared folders. These are folders on one computer that are accessible over the local area network by other computers. RIP Manager Clients must have read and write access to these shared folders on the RIP Manager Server PC.

In multi box installations (defined as RIP Manager running on a computer separate from any of the RIPs it controls), RIP Manager Server must have read and write access to the share created by the “Rip Utilities” install on the RIP PCs.

2.3 Installing an Upgrade to an Existing RIP Manager or Xiflow System

Warning!

If you have an existing Xiflow installation and you wish to upgrade it to the latest version, please consult Appendix B to the RIP Manager Reference Manual. If you do not follow the procedures outlined in the appendix, your upgrade will not function properly. If you have a previous version of RIP Manager, install it to a new folder and copy the “xiflow.wfp”, “xiflow.actions” files from the old RIP Manager installation folder to the new one.

2.4 Installing Navigator RIP Only

If you wish to install Navigator without the RIP Manager, insert the CD and select the “Navigator RIP” option from the installer splash screen.

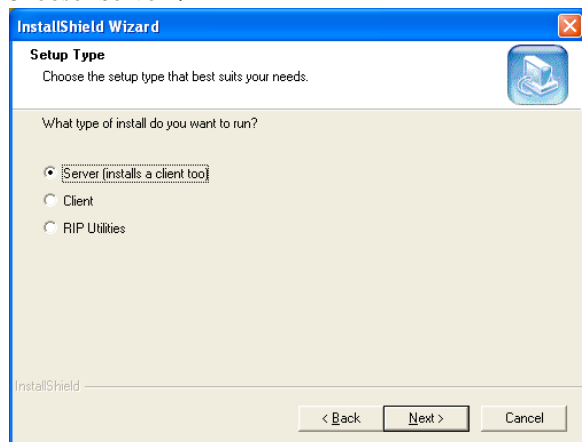
Once complete, insert the *Navigator Plug-ins* CD and follow the on-screen prompts to install support for output devices.

For more details see the *Navigator Installation Guide*

2.5 Installing RIP Manager Only

If you are upgrading an existing RIP-only system to RIP Manager control, select the “Navigator RIP Manager” option from the installer splash screen. There will be three choices.

Choose “Server”.



After the Server installation is complete you must establish control of your Navigator RIP. Run the install program again. Choose “RIP Utilities”. Repeat this process at each RIP you desire to control with RIP Manager.

RIP Manager Server, under the “Workflow Actions” menu, must be configured with a RIP action for each RIP you wish to control.

For more details see the *Navigator Installation Guide*

2.6 Platform Requirements

[Minimum computer platform requirements.](#)

Check our web site for the current system requirements at the link above.

CHAPTER 3 - INSTALLATION

3.1 Navigator GPS

Choose “Navigator GPS” from the installation splash screen.



This will guide you through the entire installation. There may be prompts for license codes during the installation. Your system will have come with a license code sheet. If you are not prompted during the installation, enter your license codes at the RIP under the “Navigator, Configure RIP” menu selection.

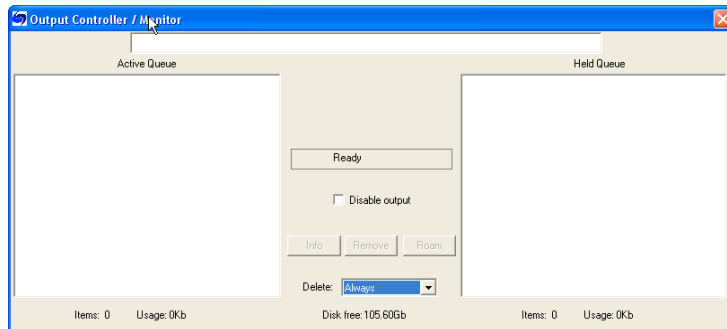
3.2 Restart your PC

After installing all components and re-attaching the Navigator dongle, re-start the PC.

3.3 RIP Configuration

RIP Manager can be imagined as a replacement for the Harlequin Input Controller and Output Controller. Subsequently, where you would have formerly set up Inputs in the Input Controller for corresponding Page Setup configurations, you now set up RIP Manager workflows. Output Controller is not needed for its job control, queueing, previewing, or hold and release functions.

Set Output Controller to “Delete Always” and uncheck “Disable Output”.



Configure Page Setups from within the RIP itself at “Navigator, Page Setup Manager”.

Do not delete the default page setups.

Once this initial configuration is completed, users will be able to select these Page Setups from within the Client application at any Mac or PC.

See the Navigator Reference Guide for more information on RIP configuration. [All Xitron Manuals are available here.](#)

CHAPTER 4 – GETTING STARTED

4.1 Launching the Software

Verify the installation of your dongle before launching the application. Without the dongle, the License Manager will not allow the software to run.

The Installer places an icon for the RIP Manager Server on your desktop. This, conjoined with your RIP, is the main component of your new RIP system. The Server will launch your RIP automatically. If you wish to start or quit the RIP, start or quit the RIP Manager instead.

Note: If your system has a Firewall installed you will see a number of alerts the first time the RIP Manager system starts. Programs that may ask for authorization (depending upon your configuration) include SOAR, JAVACORES_OAR, PDFSERVER.EXE, XITRON.EXE and others. For each component, permit the software to run, and check the box to make this permission permanent. Once each component has been authorized it will not need further permissions.

4.2.1 Page Setups

The RIP stores configurations using a system of Page Setups. You will need to create Page Setups in the RIP exactly as you would in a RIP installation without RIP Manager.

To create or modify Page Setups, use the *Page Setup Manager*. If the *Page Setup Manager* appears grayed out, it may be because the RIP Inputs are enabled (on). Turn them off by clicking the traffic light icon with the red arrow.

Create a new Page Setup using the *New...* button. Select the required output device, resolution etc. and select *Save As...* giving the new page setup a descriptive name. (Do not overwrite the name Default or delete the Default page setup. See the *Navigator RIP Operator Manual if you are using the Navigator RIP, or the corresponding manual for any other Harlequin RIP* for full details regarding page setups.

4.3 RIP Manager Server

The RIP Manager server window shows the progress of the launch process. Once the Server has fully launched, its window will become minimized. A user will normally not need to see this window. You will need to use it during configuration. View it by clicking the item in your tool bar or by typing Alt-Tab to switch to RIP Manager Server.

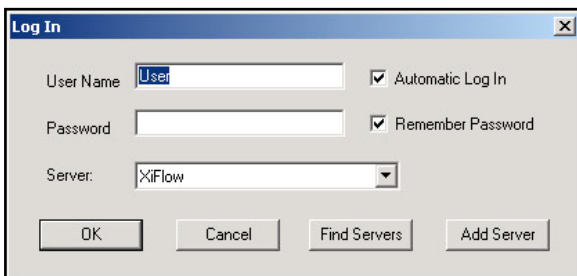
You will find useful information in this Window about the software version, its components, and the locations of job files, archive files and workflow files. Details of these features can be found in the *Server Configuration chapter*.

The installation pre-configures the Server with an Administrator user, called *Administrator* with no password, and a Regular User called *User* - also with no password. You can change these names, add passwords or add new Users as explained in the *RIP Manager Reference Manual*.

4.4 RIP Manager Client

Install a client at each Macintosh or Windows computer that you wish to connect to the system.

Client log in requires that you find the RIP Manager Server on your network and supply a valid User ID and Password.



Checking “Automatic Log In” will allow your Client application to bypass the login screen and supply the login credentials for you.

After the initial launch, the Client should connect automatically without further manual intervention.